

LEASEHOLD



Flat

39 TUDOR COURT HATHERLEY CRESCENT, SIDCUP, DA14 4HY

Asking price

£225,000

FEATURES

- Two Bedroom Second Floor Retirement Apartment
- Living/Dining Room With Balcony
- Good Size Bedrooms With Fitted Wardrobes
- No Forward Chain
- Lift To All Floors
- Fitted Kitchen
- Communal Gardens and Residents Parking
- Close To Shops and Amenities



2 Bedroom Flat located in Sidcup

Call us on

020 8301 5511

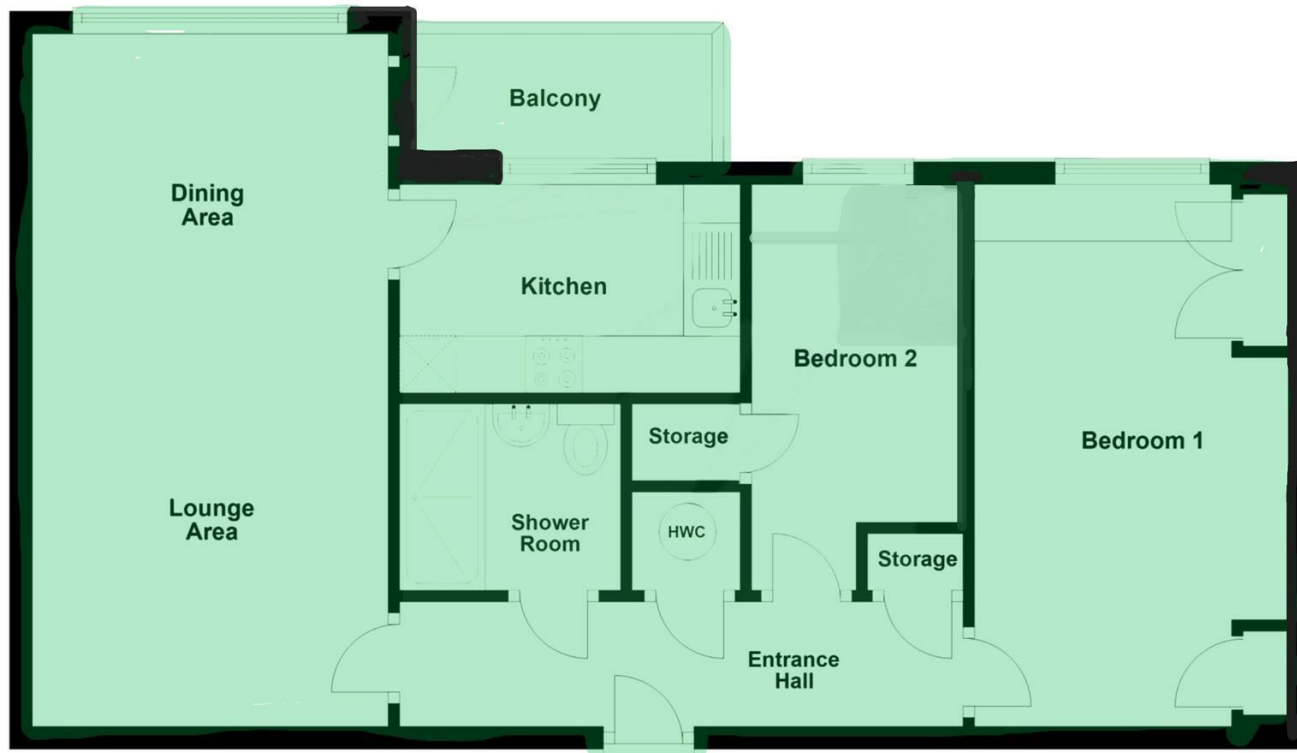
sales@westwoodpropertyservices.co.uk

Ideally located for Sidcup train station and many transport links is this well presented two bedroom second floor retirement apartment. Having been well looked after by the current owners the accommodation on offer comprises communal entrance hall with entry phone system and lift to all floors, large living/dining room with access to the balcony, fitted kitchen, two good size bedrooms and a shower room. There are lovely communal gardens as well as a seating area and residents parking which is on a first come first serve basis. Internal viewing highly advised.

Council Tax Band

C

Ground Floor



For Illustration Only
Plan produced using PlanUp.

Energy Efficiency Rating		Current	Potential
<i>Very energy efficient - lower running costs</i>			
(92 plus) A			
(81-91) B			
(69-80) C		75	80
(55-68) D			
(39-54) E			
(21-38) F			
(1-20) G			
<i>Not energy efficient - higher running costs</i>			
England & Wales		EU Directive 2002/91/EC	

Agents Note: Whilst every care has been taken to prepare these particulars, they are for guidance purposes only. All measurements are approximate and are for general guidance purposes only and whilst every care has been taken to ensure their accuracy, they should not be relied upon and potential buyers are advised to recheck the measurements.

