

LEASEHOLD



House

# 25 TUDOR COURT HATHERLEY CRESCENT, SIDCUP, DA14 4HY

Asking price

**£160,000**

## FEATURES

- One Double Bedroom First Floor Retirement
- Popular Location Close To Sidcup Train Station
- Communal Gardens and Residents Parking
- Lift To All Floors
- Modern Fitted Kitchen and Shower Room
- Bay Fronted Living Room
- Double Glazing and Electric Heating
- No Forward Chain



**Westwood**  
PROPERTY SERVICES

# 1 Bedroom House located in Sidcup

Located within the popular Tudor Court, this first floor one bedroom retirement apartment is offered for sale as CHAIN FREE. Ideally positioned for Sidcup Train Station and any locals shops the accommodation on offer comprises secure communal entrance with entry phone, entrance hall, living room with a lovely bay window, modern fitted kitchen with appliances to remain, double bedroom and a three piece shower room. Additional points to note include a communal garden, residents parking which is one a first come, first serve basis and double glazing.

Call us on

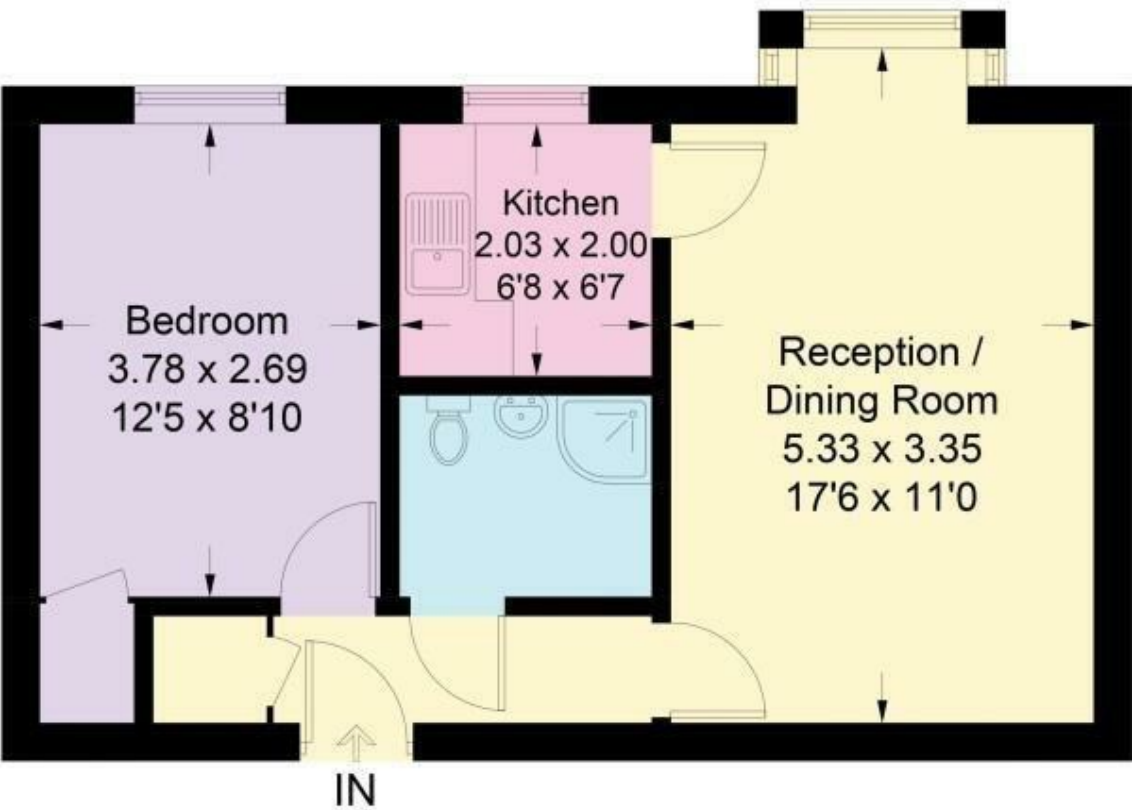
**020 8301 5511**

[sales@westwoodpropertyservices.co.uk](mailto:sales@westwoodpropertyservices.co.uk)

**Council Tax Band**

## 25 Tudor Court, Hatherley Crescent, DA14

Approximate Gross Internal Area = 40.6 sq m / 437 sq ft



Energy Efficiency Rating		
	Current	Potential
Very energy efficient - lower running costs		
(92 plus) <b>A</b>		
(81-91) <b>B</b>	81	84
(69-80) <b>C</b>		
(55-68) <b>D</b>		
(39-54) <b>E</b>		
(21-38) <b>F</b>		
(1-20) <b>G</b>		
Not energy efficient - higher running costs		
England & Wales	EU Directive 2002/91/EC	

Agents Note: Whilst every care has been taken to prepare these particulars, they are for guidance purposes only. All measurements are approximate and are for general guidance purposes only and whilst every care has been taken to ensure their accuracy, they should not be relied upon and potential buyers are advised to recheck the measurements.

