

Mayfair Gardens South Shields NE34 6LZ

This beautifully presented period home seamlessly blends original character with modern comforts. Featuring original stained glass windows and grey wood-effect flooring. The spacious hallway retains charming period details and includes a handy under stairs recess and utility meter cupboard.

The lounge is bright and generously proportioned, showcasing elegant ceiling coving, a marble fireplace with a wood-burning stove, and a stunning bay window. An additional reception room, open plan to the kitchen-diner, provides a light-filled space ideal for family living, complete with further period features.

The stylish kitchen/diner offers high-gloss white units with quartz worktops, a breakfast bar, integrated appliances including fridge-freezer and dishwasher, a built-in double oven, and Velux windows. Double doors open onto the garden, and a separate door leads to a south-facing conservatory with neutral tiled flooring and a radiator. A ground floor cloakroom features neutral tiling, a WC, and a modern wash hand basin.

Offers in the region of £475,000

1 Mayfair Gardens

South Shields NE34 6LZ



- GENEROUS SEMI DETACHED HOME
- EXTENDED KITCHEN/DINER
- FREEHOLD
- PARKING FOR UP TO SIX CARS
- TWO RECEPTION ROOMS
- WONDERFUL SOUTH FACING GARDEN
- CONSERVATORY

Vestibule

Neutrally decorated and featuring original stained glass windows that have been thoughtfully triple-glazed for energy efficiency. The space is enhanced by a modern UPVC front door and stylish grey wood-effect laminate flooring, creating a welcoming first impression.

Hallway

A spacious and welcoming hallway that retains charming period features, complemented by grey wood-effect flooring for a modern touch. Light and airy throughout, it includes a practical recess under the stairs—ideal for storage—and a discreet utility meter cupboard.

Lounge

A beautifully spacious lounge brimming with character, featuring elegant period details including ornate ceiling coving. The focal point of the room is a striking inset wood-burning stove with marble hearth, perfect for cosy evenings. A fabulous bay window floods the space with natural light, enhancing the room's inviting atmosphere.

Reception Room

An additional reception space seamlessly open plan to the kitchen-diner, creating a bright and airy layout ideal for modern living. This versatile room benefits from an abundance of natural light and showcases numerous period features, adding charm and character to the contemporary design.

Kitchen/Diner

A very generously sized and stylish kitchen/diner, featuring a sleek white high-gloss fitted kitchen complemented by luxurious quartz work surfaces. Well-equipped with integrated appliances

including a fridge-freezer and dishwasher, stainless steel sink with mixer tap, and a built-in double oven. A quartz-topped breakfast bar offers additional seating and workspace. The space is bright and inviting, enhanced by ceiling spotlights and two Velux windows. Double doors open directly onto the garden, while a further door leads into the conservatory—perfect for indoor-outdoor living.

W.C

Neutrally decorated with coordinating tiled walls and flooring, this convenient cloakroom features recessed ceiling spotlights, a modern WC, and a stylish wash hand basin—ideal for guests and everyday use.

Conservatory

Enjoying a sunny south-facing aspect overlooking the garden, this bright conservatory features a neutral tiled floor and a fitted radiator, making it a comfortable space to relax in year-round.

First Floor landing

A spacious and naturally bright landing, featuring a beautiful stained glass window that adds a touch of character. Access to the loft via a hatch; the loft has been thoughtfully boarded and fitted with lighting, providing excellent additional storage space.

Bedroom

A generously sized double bedroom showcasing a range of charming period features, including a stunning stained glass window that adds colour and character to the space.

Bedroom

A spacious double bedroom featuring a beautiful stained glass window that adds a unique focal point. Built-in storage cupboards set into the alcoves provide practical and discreet storage solutions.

Bedroom

A neutrally decorated double bedroom that benefits from a charming stained glass window and retains some attractive period features, offering both comfort and character.

Bathroom

Stylishly finished with neutral wall and floor tiles, the bathroom features a white panelled bath with a mixer tap and mains-powered shower overhead. A sleek white vanity unit houses the wash hand basin with a modern waterfall mixer tap. Additional touches include a heated chrome towel rail and recessed ceiling spotlights, combining practicality with contemporary style.

W.C

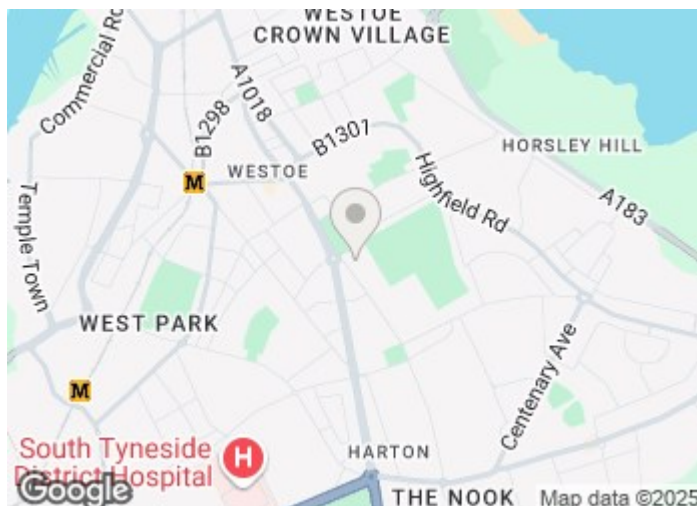
Neutrally decorated with complementary tiling, this practical space features a modern WC and a vanity unit with an integrated wash hand basin, offering both functionality and a clean, contemporary look.

External

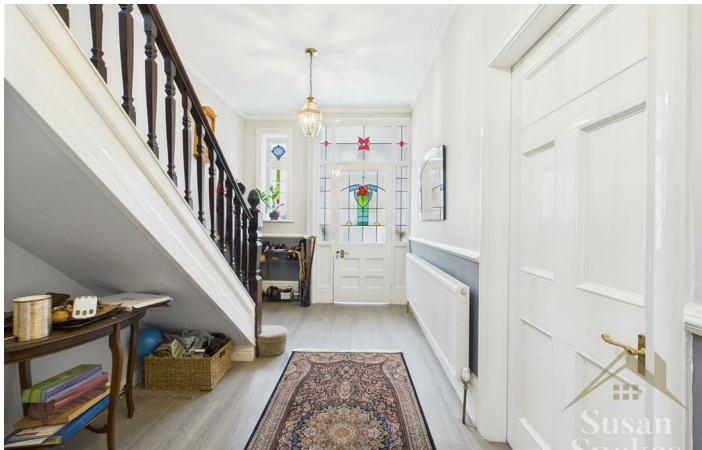
To the front, the property benefits from a very generous driveway with space for up to six vehicles, as well as a convenient car port. The front garden is designed for low maintenance. To the rear, the south-facing garden enjoys plenty of sunlight throughout the day, featuring mature borders and a well-maintained lawn—perfect for relaxing or entertaining.

Garage

Garage with utility area, plumbing for washing machine and with electric shutter door.



Directions



Floor Plan



These particulars, whilst believed to be accurate are set out as a general outline only for guidance and do not constitute any part of an offer or contract. Intending purchasers should not rely on them as statements of representation of fact, but must satisfy themselves by inspection or otherwise as to their accuracy. No person in this firms employment has the authority to make or give any representation or warranty in respect of the property.

