



64 Wyresdale Road, Liverpool
Liverpool

In Excess of **£168,000**





Dining Area

Laminate flooring, double glazed Patio doors, open plan, white units and wooden countertops.

Lounge

Laminate flooring, Double glazed Windows, Gas Central Heating, fireplace.

Exterior

Exterior front & rear.

Bedroom

Double Bedroom, front facing of the house, carpeted, Gas central Heating, Double glazed windows, original fireplace.

Bathroom

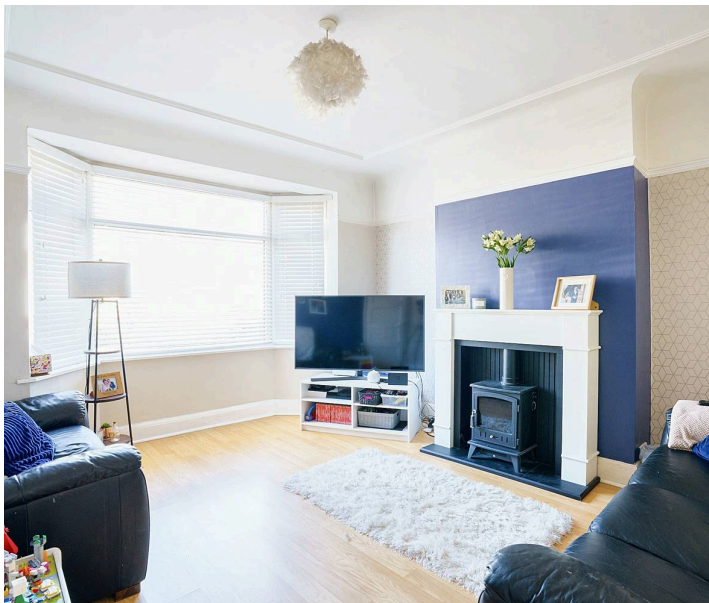
Bathroom, roll top bath, W.C. Pedestal, sink, tiled flooring, part tiled walls, double glazed windows, gas central heating.

Bedroom

Rear Double carpeted bedroom, double glazed, gas central heating.

Landing

Carpeted Landing leading to upper floor bedrooms and bathroom.





64 Wyresdale Road

Liverpool, Liverpool

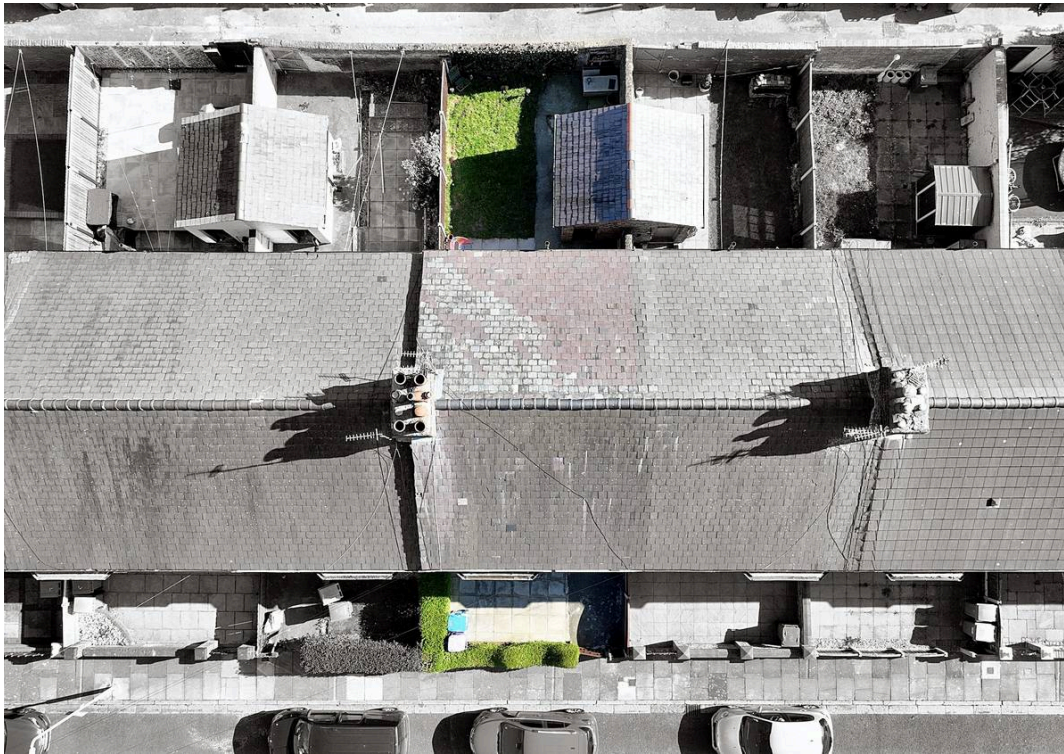
Truly a Wonderful Family Home Full of Light and Space.

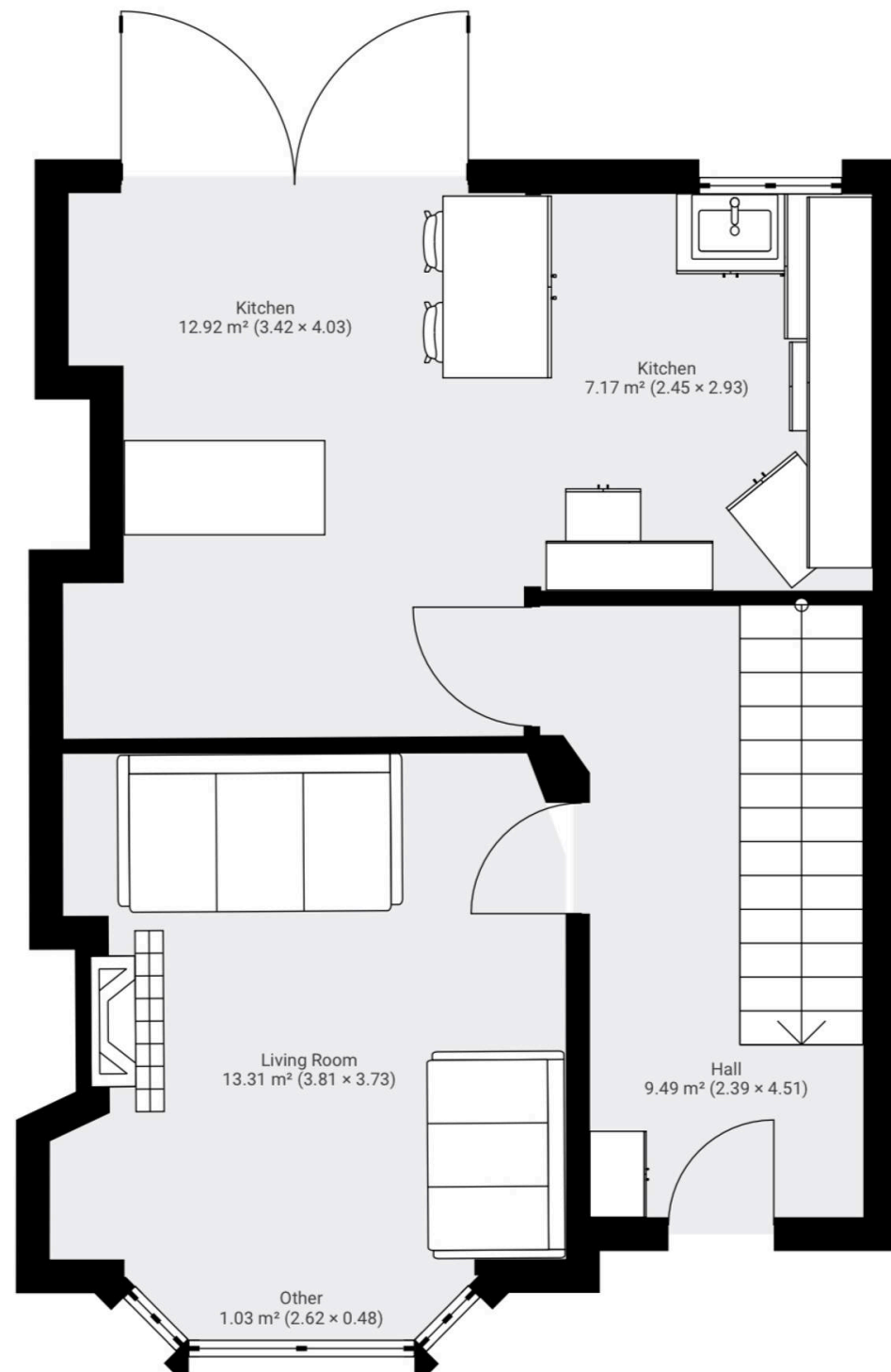
Council Tax band: B

Tenure: Freehold

EPC Energy Efficiency Rating: C

EPC Environmental Impact Rating: D







FREYJA NORTH



Freyja North Limited

221 Warbreck Moor, Liverpool - L9 0HU

0151 665 0855 • lettings@freyja-north.com • freyjanorth.co.uk/

