



BOWMAN  
ESTATES

10 Milton Street, Ramsbottom

Bury £450,000











## 10 Milton Street

- Four-storey character home blending period charm with contemporary design
- Striking panoramic views across rooftops and open countryside from multiple levels
- Mediterranean-inspired outdoor spaces, including two private balconies ideal for morning coffee or evening relaxation
- Elegant entrance hall with traditional flagstone flooring and separate laundry room
- Open-plan country-style kitchen & dining area with shaker cabinetry, slate flooring, and dual-fuel range cooker
- Second-floor lounge with log-burning stove and bi-folding doors opening to a sun-drenched balcony
- Spacious master bedroom with dual aspect windows, cast iron fireplace, and peaceful outlook
- Tranquil first-floor bedroom with ensuite and balcony access
- Stylish period-style bathroom with roll-top bath, walk-in shower, and heritage fittings
- Bright third bedroom with built-in storage
- Tastefully finished throughout with earthy tones, natural textures, and timeless fittings
- A perfect balance of cosy indoor spaces and light-filled rooms ideal for entertaining and everyday living



### Entrance hall, Laundry and bathroom

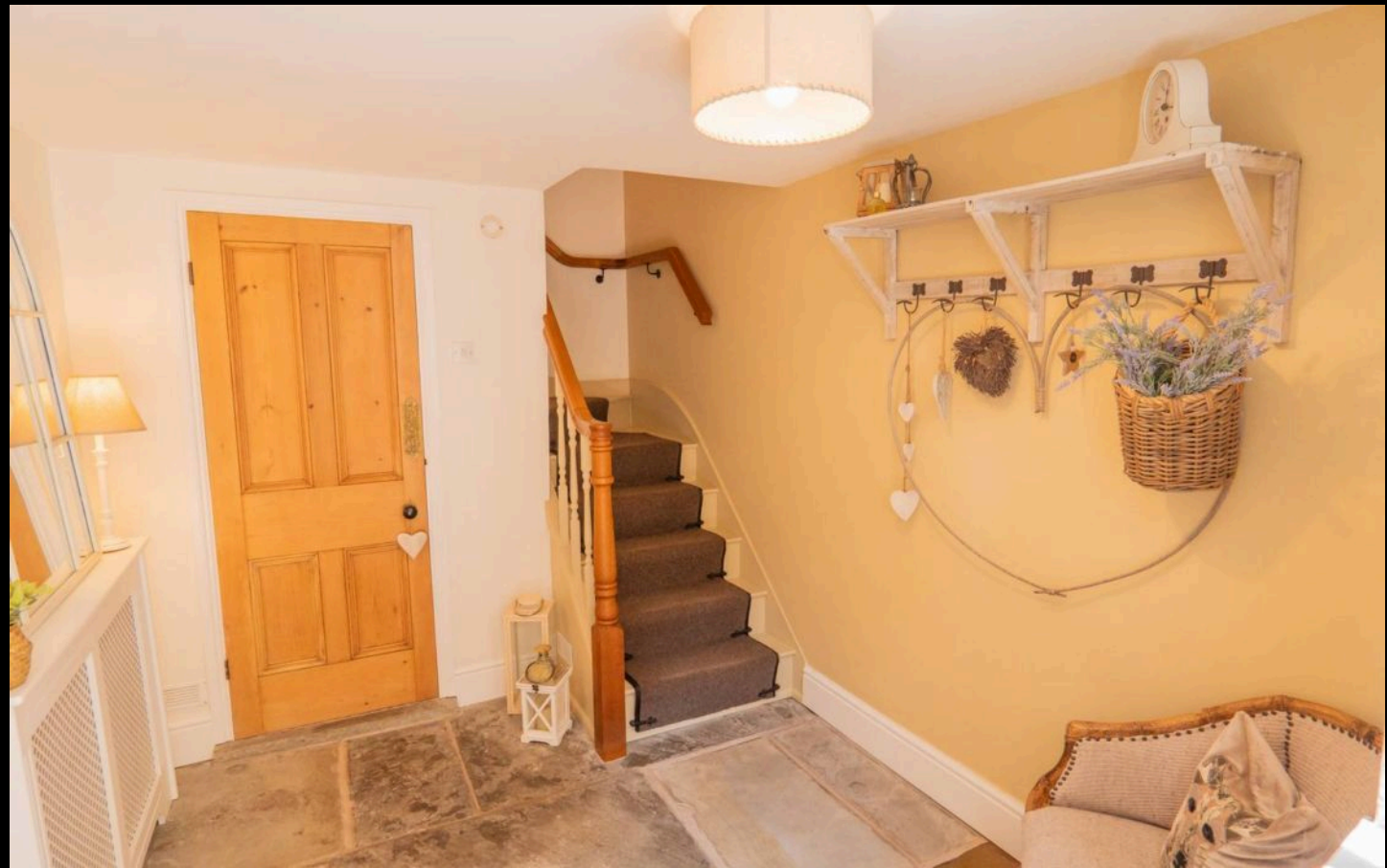
13' 4" x 5' 4" (4.06m x 1.63m)

**Ground Floor – Practicality Meets Period Charm** The ground floor of 10 Milton Street offers a warm welcome with a spacious entrance hall finished with traditional flagstone flooring—a nod to the home's character and heritage. Thoughtfully designed for everyday convenience, this level features a stylish cloakroom/WC, ideal for guests or family life. To the rear, a well-equipped laundry room provides excellent utility space, complete with fitted cabinetry, wooden worktops, and room for appliances. It's a functional hub that helps keep the rest of the home clutter-free. This floor blends practical living with charming period details, setting the tone for the rest of the property.

### Open plan Kitchen and dining

25' 3" x 15' 1" (7.69m x 4.59m)

**Open-Plan Kitchen & Dining – Country Style with a Contemporary Twist** At the heart of 10 Milton Street is a well-designed open-plan kitchen and dining space that blends rustic charm with modern practicality. Cream shaker-style cabinets, polished black worktops, and slate-tiled flooring create a classic country aesthetic with a clean, updated finish. A generous window allows natural light to pour in, while the dual-fuel range cooker is both a statement feature and a functional favourite. The adjoining dining area, with its solid oak flooring and soft neutral tones, is perfect for everyday meals or hosting guests. Pendant lights above the farmhouse-style table add warmth, while a gallery wall and clever under-stair storage bring both character and utility. This space is ideally suited to modern living, offering comfort, style, and timeless appeal.











### Second-Floor Lounge with Balcony

13' 11" x 14' 8" (4.25m x 4.46m)

**Second-Floor Lounge with Balcony — Views & Versatility** Positioned on the third floor, this spacious lounge is a standout feature of the home. Light pours in through bi-folding doors that lead directly onto a private balcony, offering far-reaching panoramic views over rooftops and the surrounding countryside. Inside, the room is generously proportioned and filled with natural light, enhanced by soft neutral tones and a calm, airy atmosphere. A log-burning stove with a stone mantel provides a cosy focal point, ideal for colder months. The seamless connection between indoor comfort and outdoor scenery makes this an exceptional space for both entertaining and unwinding.

### Bedroom with En Suite & Balcony

7' 10" x 12' 8" (2.39m x 3.86m)

This bright and tranquil first-floor double bedroom offers both comfort and convenience, complete with its own en suite shower room and access to a charming private balcony. French doors open directly onto the balcony, allowing fresh air and natural light to flow through the room. It's an ideal spot to enjoy a quiet morning coffee or unwind in the evening with rooftop views and a touch of greenery. Inside, the bedroom is well-proportioned with neutral tones and soft carpeting, creating a peaceful retreat. The en suite includes a walk-in shower, traditional-style basin, and WC—perfect for guests or as a private principal suite.













### **Elegant Period-Style Bathroom**

8' 11" x 7' 9" (2.71m x 2.36m)

This beautifully presented bathroom combines timeless elegance with modern comfort. A freestanding roll-top bathtub, complete with striking black claw feet and traditional chrome fixtures, brings a touch of luxury and relaxation to the space. Natural light floods the room through a generous window, dressed with a soft Roman blind that enhances the warm, neutral tones throughout the home. The Burlington-style high-level toilet complements the Victorian-style doors found throughout the property, while his-and-hers vintage taps over a ceramic basin add further period charm. Classic panelled walls and a glazed walk-in shower complete the look, all set against polished tiled flooring. Thoughtfully styled with a rustic wooden stool, tasteful accessories, and ambient lighting, this bathroom is both practical and characterful—a serene retreat with every detail carefully curated for comfort and elegance.

### **Spacious and Serene Master Bedroom**

11' 11" x 10' 2" (3.62m x 3.11m)

This impressive master bedroom offers a perfect blend of comfort, character, and style. Generously sized and bathed in natural light, the room features dual windows that frame picturesque views of the surrounding landscape, creating a calm and uplifting ambiance. The space is thoughtfully decorated in warm neutral tones with plush carpeting, adding to the sense of relaxation. A beautiful antique-style cast iron fireplace acts as a focal point, accompanied by classic details such as an ornate full-length mirror and statement pendant lighting. elegant armchair nestled by the window—ideal for a quiet reading corner. Stylish, spacious, and serene, this master suite offers a welcoming retreat at the heart of the home.











### **Garden**

Beautifully Landscaped Shared Garden with Panoramic Views This property boasts access to a stunning shared garden, thoughtfully landscaped and lovingly maintained to offer a peaceful outdoor retreat. A winding gravel path meanders through vibrant flowerbeds, mature shrubs, and well-established greenery, leading to a quiet seating area —perfect for relaxing or enjoying the countryside surroundings. The elevated position of the garden provides spectacular panoramic views across the rolling hills and the village below, making it a truly special space. Stone terraces, secluded corners, and bursts of seasonal colour enhance the sense of privacy and natural beauty. Whether you're unwinding with a book, enjoying a morning coffee, or entertaining guests, this delightful garden offers a unique blend of tranquillity and breathtaking scenery right on your doorstep.

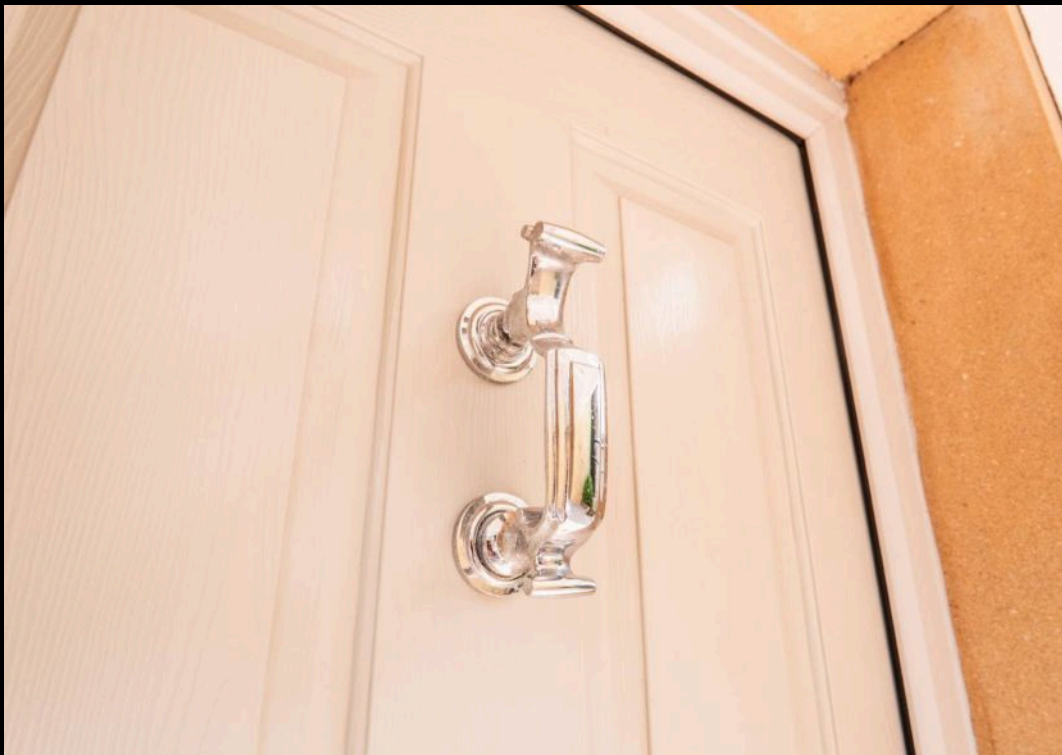
### **Garage**

### **Off street**

### **Allocated parking**









# 10 Milton Street

Ramsbottom, Bury

Walk through Video Tour Take a more in depth look with our walk through video tour by scanning the QR code below or following the link

<https://www.youtube.com/watch?v=AB2kAu7NDG4>

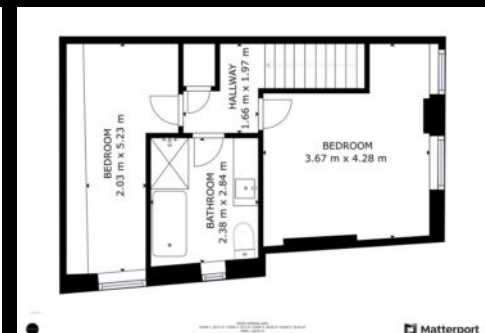
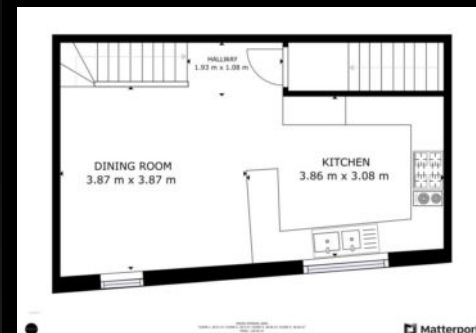
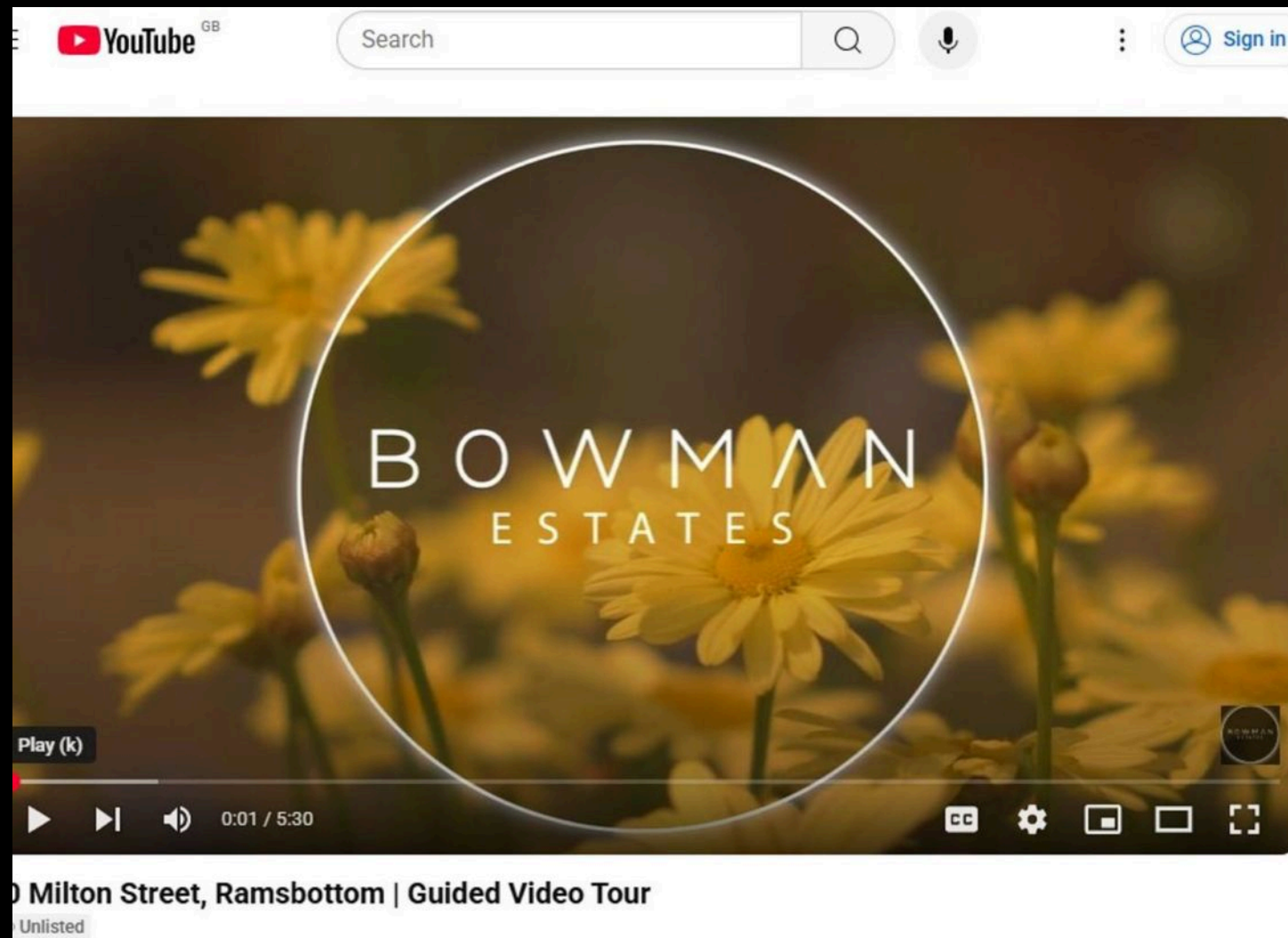
3D Virtual Tours Our 3D virtual tour also allows you to explore every inch of the property from the comfort of your own home. Scan the QR code below or follow the link <https://my.matterport.com/show/?m=5Qs62P3dHPb>

Council Tax band: D

Tenure: Freehold

EPC Energy Efficiency Rating: D

EPC Environmental Impact Rating: D





A black circular logo with the text "BOWMAN" in a large, white, serif font, and "ESTATES" in a smaller, white, sans-serif font below it.

BOWMAN  
ESTATES



## Bowman Estates Ltd

88, Bolton Road West, Bury - BL0 9PD

01706310171

[sales@bowmanestatesltd.com](mailto:sales@bowmanestatesltd.com)

[www.bowmanestatesltd.com](http://www.bowmanestatesltd.com)

