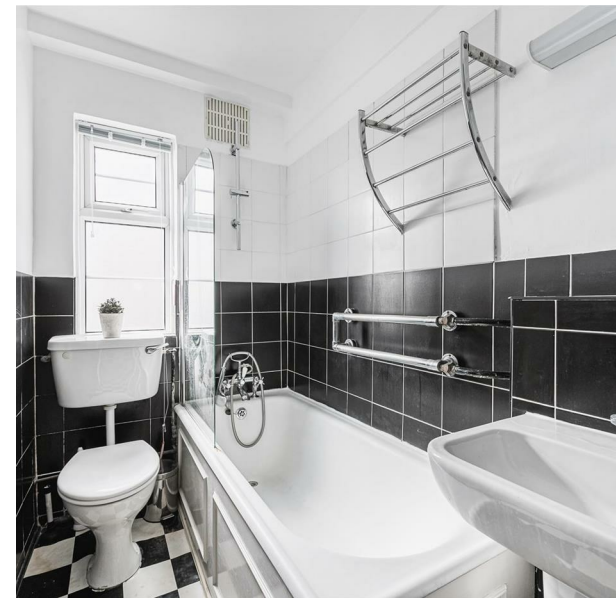


22 Chiswick Village, London, W4 3BY
£2,000 Per month
Council Tax Band: C



A beautifully appointed two-double-bedroom apartment, situated on the second floor of a well-maintained, purpose-built private development.

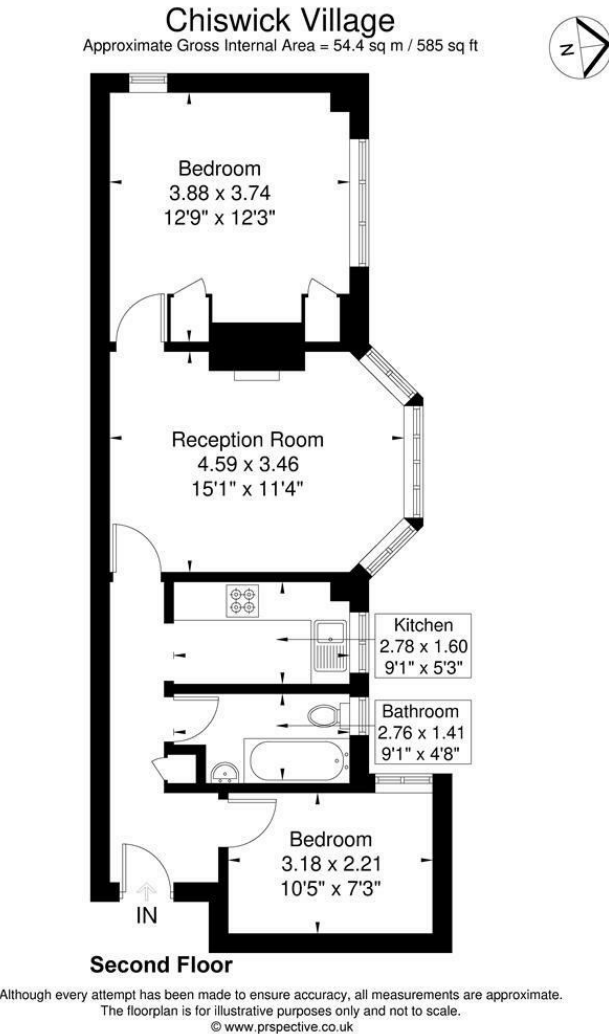
The accommodation features a spacious reception room with an area for dining, a fully fitted modern kitchen, two bedrooms, and a family bathroom. Residents also benefit from access to well-kept communal gardens, lift service, and a secure entrance.

Chiswick Village is ideally located moments from Kew Bridge and Gunnersbury Stations, with easy access to the A4/M4 and Heathrow. The River Thames and the various amenities of Chiswick High Road are also within close proximity.

Additional details:



Building 7, Chiswick Park
566 Chiswick High Road
London
W4 5YG
02082260189
oliver@addisongrove.co.uk



Energy Efficiency Rating		
	Current	Potential
Very energy efficient - lower running costs		
(92 plus) A		
(81-91) B		
(69-80) C		
(55-68) D		
(39-54) E		
(21-38) F		
(1-20) G		
Not energy efficient - higher running costs		
England & Wales	EU Directive 2002/91/EC	