

37 Stile Hall Gardens, London, W4 3BT

£6,000 Per month

Council Tax Band: G



ADDISON GROVE



A stunning five-bedroom, semi-detached Victorian family home with a large private garden and is situated just north of the river.

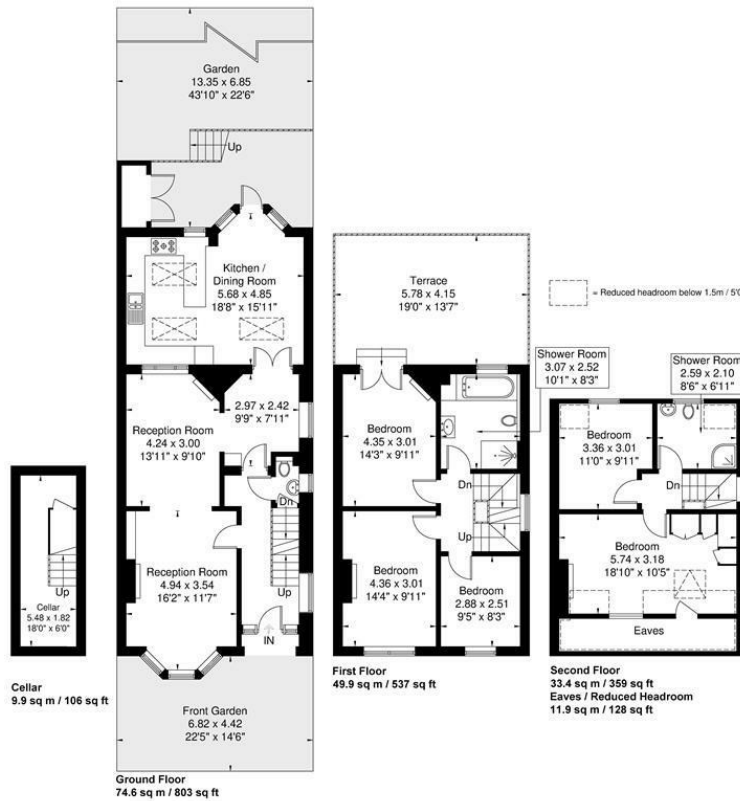
The ground floor features a double reception room, a downstairs WC, and a kitchen/dining area that flows beautifully into a well-maintained, mature garden. Upstairs, find two large bedrooms, an additional bedroom/study, and a luxurious bathroom. The rear bedroom enjoys access to a fabulous roof terrace, offering breathtaking views over the garden – an idyllic spot for morning coffee or evening drinks. The second floor houses two more bedrooms, including a particularly large front bedroom equipped with built-in storage

Throughout the property, you'll find beautiful wooden flooring, stunning feature fireplaces, and contemporary-style bathroom suites. The glorious landscaped rear garden features patio areas and a raised lawn area, perfect for outdoor entertaining.



Building 7, Chiswick Park
566 Chiswick High Road
London
W4 5YG
07795246651
oliver@addisongrove.co.uk

Stile Hall Gardens
Approximate Gross Internal Area = 167.8 sq m / 1805 sq ft
Eaves / Reduced Headroom = 11.9 sq m / 128 sq ft
Total = 179.7 sq m / 1933 sq ft



Although every attempt has been made to ensure accuracy, all measurements are approximate.
The floorplan is for illustrative purposes only and not to scale.
© www.perspective.co.uk

Energy Efficiency Rating		Current	Potential
Very energy efficient - lower running costs			
(92 plus) A			
(81-91) B			
(69-80) C			
(55-68) D		53	76
(39-54) E			
(21-38) F			
(1-20) G			
Not energy efficient - higher running costs			
England & Wales	EU Directive 2002/91/EC		