

---

# Glenbrook

---

Hammersmith  
London W6

---



Glenbrook puts you right at the heart of one of the world's great cities. Business, culture, entertainment, shopping – the best that London has to offer is right on your doorstep when you live in fashionable Hammersmith & Fulham. Against this incredibly diverse and ever-changing backdrop, Glenbrook's stylish collection of 1, 2 and 3-bedroom apartments offers simply exceptional contemporary living.





An aerial night view of London, showing the city's lights and the River Thames. The London Eye is visible in the distance. Overlaid on the image are several statistics in large white text.

8.1 million people

1,007 museums & galleries

Nº1 ranked shopping capital city

270 Underground stations

5 major international airports

4 UNESCO World Heritage Sites

43 universities

22% of the UK economy





# Your home in the heart of town

Computer generated imagery  
for illustrative purposes only.





# A city to love and enjoy



London is a city of endless attractions. Find your inspiration in its unique mix of the traditional and the cutting edge.



From Glenbrook*	Minutes
Big Ben	18 ➡
Buckingham Palace	11 ➡
Chelsea Football Club	10 ➡
Houses of Parliament	18 ➡
London Eye	24 ➡
Madame Tussauds	18 ➡
Piccadilly Circus	16 ➡
St Paul's Cathedral	25 ➡
Tower Bridge & Tower of London	30 ➡
Trafalgar Square	17 ➡
Kensington Palace	14 ➡

\*All times are approximate. Walking and bus times are from Glenbrook to destination. All other times are from Hammersmith Underground to station closest to destination. Source TFL and Google Maps.





# The life of plenty

From Glenbrook*	Minutes
Bond Street	25 ➡
Fortnum & Mason	15 ➡
Harrods	10 ➡
Harvey Nichols	10 ➡
Portobello Road Market	13 ➡
Savile Row	16 ➡
Selfridges	25 ➡
Westfield Shopping Mall	3 ➡
Chiswick High Road	9 🚗

\*All times are approximate. Walking and bus times are from Glenbrook to destination. All other times are from Hammersmith Underground to station closest to destination. Source TFL and Google Maps.



- 02
- 03
- 01 Fortnum & Mason, Piccadilly  
02 Rolls Royce, Mayfair  
03 Louis Vuitton, Bond Street  
04 Hermes, Bond Street  
05 Chanel, Bond Street  
06 Harrods, Knightsbridge  
07 Burberry, Knightsbridge



04 05

From the latest fashions to the finest brands, here you can indulge every whim.

Some of the most exclusive shopping is to be found in Knightsbridge and Mayfair, home to prestigious labels such as Burberry, Dunhill, Stella McCartney and Mulberry, and famous

department stores Harrods, Harvey Nichols and Selfridges. Close to Hammersmith & Fulham, Westfield Shopping Mall offers over 300 shops including Louis Vuitton and Prada.



07





# One city, a whole world of culture



01

London is a city rich in culture. The opportunities are limitless whether you are inspired by the contemporary or the traditional, have a few minutes or a few days. Highlights include the capital's many galleries and museums – including the National Portrait Gallery, Tate Modern and British Museum. The West End attracts the biggest shows from musicals to theatre and venues such as Wembley Arena and the O2 stage landmark concerts week in week out.

Art, theatre, music, architecture – whatever’s on your cultural wish list, London always has the capacity to surprise and delight.

02



03 04



05



06

From Glenbrook*	Minutes
Hammersmith Apollo	11
Lyric Theatre	5
Kew Gardens	11
Museum of Fulham Palace	14
National Portrait Gallery	17
Natural History Museum	8
Royal Academy of Arts	14
Royal Albert Hall	8
Royal Court Theatre	12
Royal Opera House	17
Science Museum	8
Tate Modern	24
Victoria & Albert Museum	8

\*All times are approximate. Walking and bus times are from Glenbrook to destination. All other times are from Hammersmith Underground to station closest to destination. Source TFL and Google Maps.

- 01 The 4th Plinth, Trafalgar Square
- 02 Royal Opera House
- 03 The British Museum
- 04 Hayward Gallery
- 05 The National Gallery
- 06 Royal Albert Hall
- 07 The British Museum, inner courtyard

07







02



03

From Glenbrook*	Minutes
Latymer School	6
Barts & The London School of Medicine & Dentistry	39
City University	29
Guildhall School of Music & Drama	34
Imperial College London	8
King's College London	22
London School of Economics & Political Science	21
Queen Mary University of London	39
Royal College of Music	8
University College London	22
University of the Arts London	3
University of Westminster	25
St Paul's School	18

\*All times are approximate. Walking and bus times are from Glenbrook to destination. All other times are from Hammersmith Underground to station closest to destination. Source TFL and Google Maps.

# A global seat of modern learning

London is home to some of the world's most recognised and respected academic institutions.

The city's universities are well known in the academic world and include University College London, Imperial College London and King's College

London. Renowned schools such as St Paul's, Highgate, Harrow and Westminster attract families to London from around the globe.



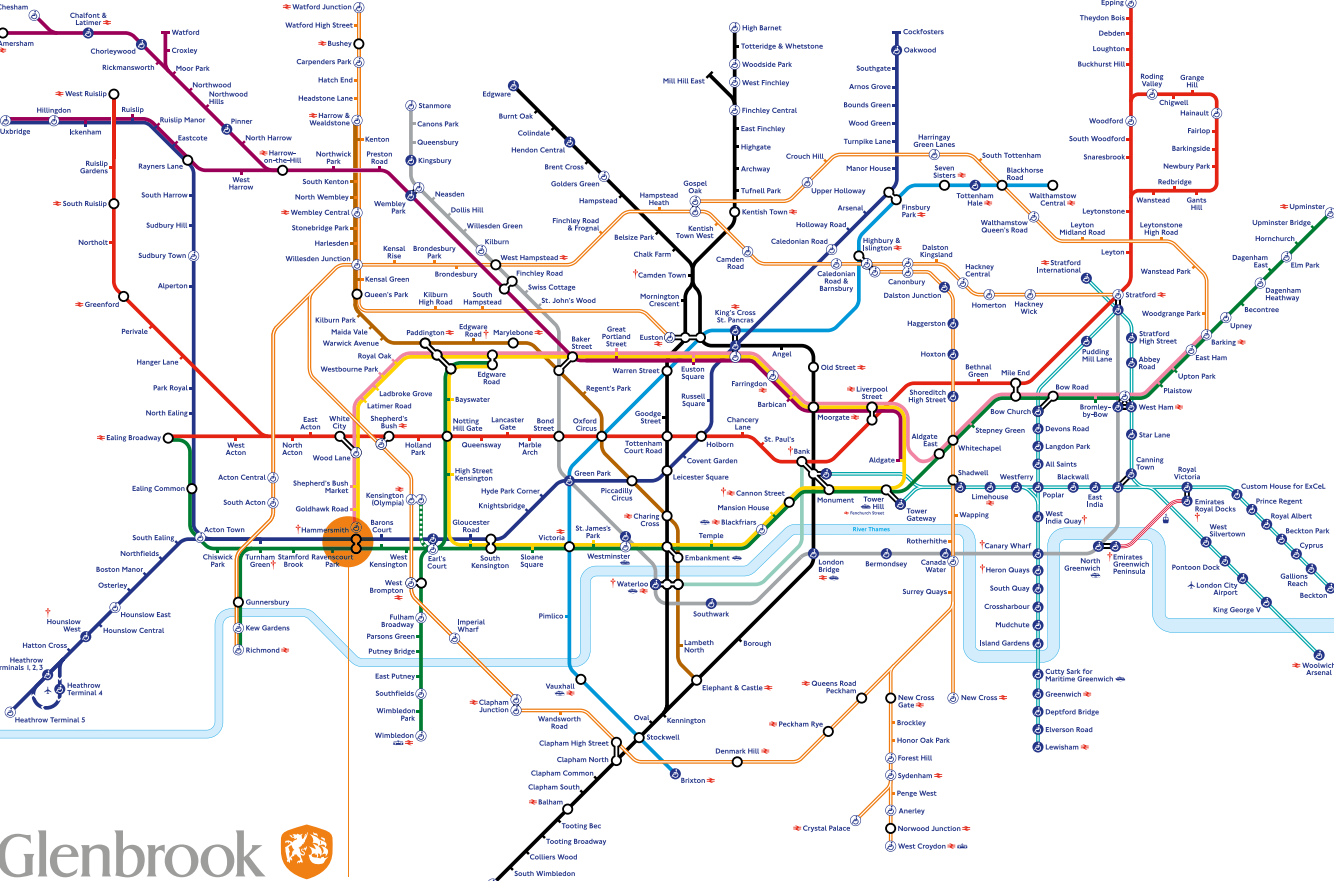
06



05

- 01 King's College
- 02 Imperial College
- 03 University of Westminster
- 04 University College
- 05 The London Business School
- 06 London School of Economics





Glenbrook 

Five international airports as well as direct rail links connect London with mainland Europe and the world, making getaways easy from the capital. Heathrow, Europe’s busiest airport, is easily accessible from



Hammersmith via the London Underground and also from Paddington on the Heathrow Express. The extensive Underground and bus network make it fast and simple to move around the city.



From Glenbrook*	Minutes
Heathrow ➔	32 ➔
City Airport ➔	46 ➔
Euston	23 ➔
Gatwick ➔	48 ➔
Liverpool Street	32 ➔
Marylebone	23 ➔
Paddington	12 ➔
King’s Cross St Pancras	25 ➔
Paris by Eurostar	2h 16
Brussels by Eurostar	2h
Victoria	14 ➔
Waterloo	24 ➔

\*All times are approximate. Walking and bus times are from Glenbrook to destination. All other times are from Hammersmith Underground to station closest to destination. Source TFL and Google Maps.

01  
02 03

# A true centre of the world

By air, road and rail, London is an unparalleled international travel hub.

04



- 01 Departures at Heathrow
- 02 Gatwick Express
- 03 Eurostar King’s Cross St Pancras
- 04 Heathrow Airport
- 05 Piccadilly Line Heathrow Airport
- 06 Gatwick Airport

05

06



Ravenscourt Park

Westfield Shopping Mall

Chiswick High Road

Latymer School

Portobello Road

Holland Park

Hyde Park

Hammersmith

Kensington High Street

Royal Albert Hall

London Eye

A4/M4 Motorway

The Shard

Canary Wharf

Hammersmith Bridge

The Queens Club

St Paul's School







01 02 03

- 01 Southward view over Hammersmith
- 02 Hammersmith & City Line
- 03 Hammersmith Underground Station
- 04 Hammersmith Broadway
- 05 New iconic red London bus
- 06 Hammersmith Bridge
- 07 District Line at Ravenscourt park



# The best connections in town

Be better connected locally, regionally and globally with a huge range of travel options on your doorstep.

04












- Piccadilly Line
- District Line
- Hammersmith & City Line
- Circle Line

The neighbourhood is served by four London Underground lines, making it simple to access the rest of the capital. For travelling by car Hammersmith is also on the A4, a major route east and west that connects you to the UK's extensive motorway network.

07

05



From Glenbrook*	Minutes
Ravenscourt Park  District Line	4 
Hammersmith  Hammersmith & City Line Circle Line	6 
Hammersmith  District Line Piccadilly Line	7 
Hammersmith Bus Station 	7 
Black Cab Taxi Rank Hammersmith Broadway	7 

\*All times are approximate. Walking and bus times are from Glenbrook to destination. All other times are from Hammersmith Underground to station closest to destination. Source TFL and Google Maps.

06





# W6

Hammersmith is one of the capital's most vibrant neighbourhoods, with a real sense of community and a thriving business heart. A great place to live and work, it also offers fast, easy access to the rest of the capital.





# Hammersmith life is as vibrant or relaxed as you want it to be

02

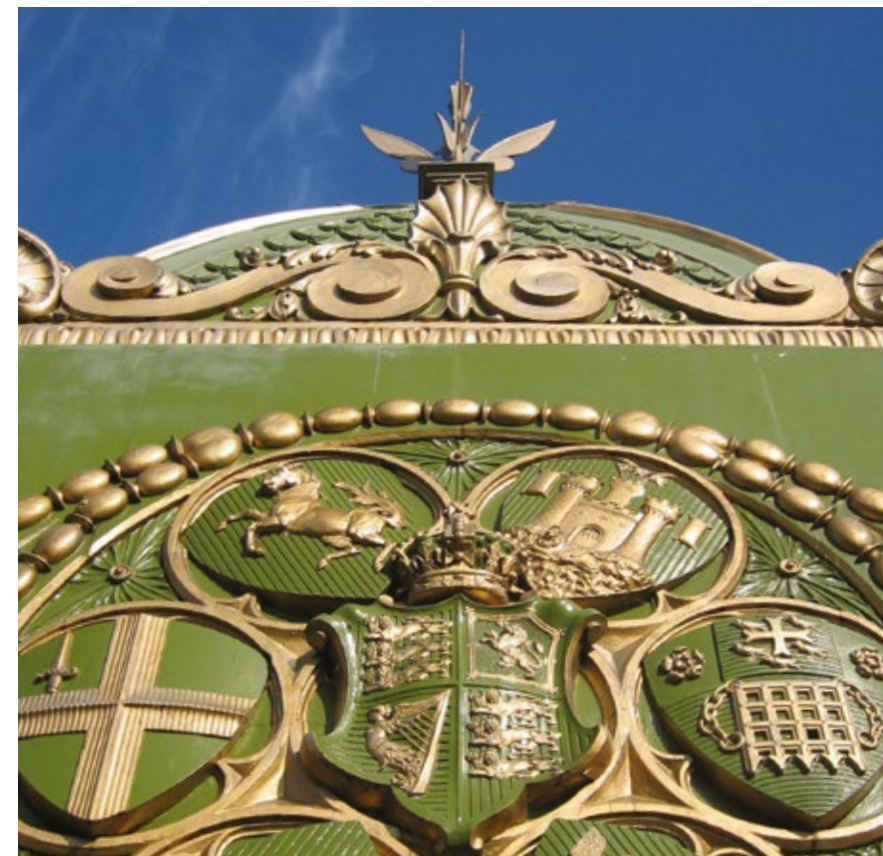


01

01 Ravenscourt Park  
02 Lyric Theatre  
03 Chiswick High Road  
04 Cupcakes, Brook Green



04 03



05

09 08

05 Hammersmith Bridge  
06 Hammersmith boutique cafe  
07 Sun setting over Thames  
08 Traditional front door  
09 Gourmet coffee culture

06



World cuisine, riverside walks,  
cultural highlights, stylish  
shopping – Hammersmith has  
so much to keep you here, that  
it is easy to forget central London  
is only 15 minutes away.

07





# Dining

Foodies love this corner of the city with its world-class chefs and huge choice of cuisines from around the globe.

01 04 03



Hammersmith has scores of restaurants catering for all tastes, from Michelin-starred celebrity haunts to gastro pubs and fashionable burger joints.

A walk along the river brings you to some of London's most historic pubs dating back as far as the 17th Century, with favourites including The Dove and The Old Ship.

- 01 Artisan Coffee
- 02 River Café
- 03 Raoul's Gourmet
- 04 Byron Burgers
- 05 The Dove
- 06 Stonemasons Arms

02



05

06



## From Glenbrook\*

Restaurants	Minutes
The Gate	11 ⚡
Lola & Simón	9 ⚡
Raoul's Gourmet	8 ⚡
Crabtree	15 🚌
La Trompette	13 🚌
River Café	14 🚌

Pubs	Minutes
The Anglesea Arms	12 ⚡
The Dove	8 ⚡
Hampshire Hog	5 ⚡
Hammersmith Ram	5 ⚡
Stonemasons Arms	2 ⚡

Cafés	Minutes
Artisan Coffee	13 ⚡
Blanche Eatery	6 ⚡
Café Brera	6 ⚡
Counter & Table	15 ⚡



From live music to the latest plays, there's a packed cultural calendar to explore.

07

08

# Culture

12



- 07 Lyric Theatre
- 08 Hammersmith Apollo
- 09 William Morris Museum
- 10 Museum of Fulham Palace
- 11 Shepherd's Bush Empire
- 12 Bush Theatre

11

10

From Glenbrook*	Minutes
Hammersmith Apollo	11 ⚡
Kelmscott House	9 ⚡
Lyric Theatre	5 ⚡
Bush Theatre	4 🚶
Shepherd's Bush Empire	1 🚶
Museum of Fulham Palace	14 🚶

\*All times are approximate. Walking and bus times are from Glenbrook to destination. All other times are from Hammersmith Underground to station closest to destination. Source TFL and Google Maps.



The Lyric Theatre has played a starring role in Hammersmith life since it was established as an intimate opera house in 1895. It has hosted the likes of Harold Pinter and Sir John Gielgud, and today stages over a thousand performances a year.

09

The Hammersmith Apollo showcases world class acts in a refurbished Grade II listed art deco cinema. Some of the stars who have performed here over the years include Ella Fitzgerald, The Beatles, Bob Dylan and David Bowie.





01

The proximity of Hammersmith to central London and the city's international airports has attracted a great many international companies who now have head offices here. They include L'Oreal, Sony Ericsson, Disney, US Airways and Universal Music. A recent wave of investment has made the area an even more attractive place to do business.

# Business

Excellent transport links and local investment have made Hammersmith a magnet for businesses large and small.

04



05



- 01 New Hammersmith office building
- 02 Sony Global Communications' office
- 03 L'Oréal, UK headquarters
- 04 GE Capital's London offices
- 05 Coca-Cola, UK headquarters

# shopping

Hammersmith's eclectic mix of shopping has everything from world-famous brands to boutique stores.

06



07

From Glenbrook*	Minutes
Westfield Shopping Mall	3
Knightsbridge	10
Lyric Square Food Market	6
Chiswick High Road	9
Kensington High Street	10
Sloane Square & King's Road	11
Portobello Road Market	13

\*All times are approximate. Walking and bus times are from Glenbrook to destination. All other times are from Hammersmith Underground to station closest to destination. Source TFL and Google Maps.



10



Westfield London, one of the largest shopping malls in Europe, is a 3-minute tube ride away and has over 300 stores to choose from. King Street offers shoppers a good selection of the British high street chains and supermarkets. The weekly farmer's market held in Lyric Square has a variety of fresh foods direct from the producer.

08

09

- 06 Local florist
- 07 Westfield Shopping Mall
- 08 Kensington High St
- 09 Harrods, Knightsbridge
- 10 Massimo Dutti, Kensington High St



# Outdoors

You could forget you’re in central London with the area’s abundance of green spaces and riverside walks.

From Glenbrook*	Minutes
Brook Green	13 
Furnival Gardens	8 
Ravenscourt Park	4 
River Thames	8 
St Peters Square	13 
Hyde Park	12 
Richmond Park	14 
Holland Park	19 
London Wetland Centre	22 

\*All times are approximate. Walking and bus times are from Glenbrook to destination. All other times are from Hammersmith Underground to station closest to destination. Source TFL and Google Maps.

01 04 03



Hammersmith is blessed with a large number of beautiful open spaces, from the landscaped gardens of Ravenscourt Park to the paths along the River Thames that offer miles of scenic walking or cycling along the river.



Just across Hammersmith Bridge is the London Wetland Centre, a haven for wildlife in 106 acres, popular with local families, and the Hammersmith Riviera, home to numerous sailing and rowing clubs.

- 01 Furnival Gardens
- 02 Hammersmith Bridge
- 03 Bike-friendly Thames embankment
- 04 Thames rowing boats
- 05 View from The Tea House, Ravenscourt Park

02











05



# Glenbrook



# W6 highlights

-  London Underground
-  London Overground
-  Restaurants, cafes, bars and pubs
-  Shopping
-  Cultural venues
-  Green spaces
-  Sports venues
-  Education





# Glenbrook

Glenbrook's 1, 2 and 3-bedroom apartments have been designed for those who demand the best in style, luxury and location. From the communal landscaped roof terrace to the dedicated concierge service, Glenbrook has been created to meet the needs of discerning London residents.

Computer generated imagery  
for illustrative purposes only.





From the moment you arrive at Glenbrook, the tone is set. Elegant design, the finest materials and the last word in modern comfort. From the bespoke contemporary kitchen and engineered oak flooring to the Villeroy & Boch sanitary ware.



Computer generated imagery  
for illustrative purposes only.





Each elegant apartment at Glenbrook features spacious, light-filled living spaces framed by full-height glass. The ideal environment for relaxing and entertaining.







Computer generated imagery  
for illustrative purposes only.



Inside and out,  
exceptional design and  
craftsmanship combine  
to deliver an outstanding  
lifestyle experience.



Computer generated imagery for illustrative purposes  
only. Photography of previous Loncor Homes apartments.







# Glenbrook specifications

All apartments at Glenbrook are thoughtfully designed using the finest materials, fixtures and fittings.

### Kitchens

All apartments have modern, open-plan fitted kitchens equipped with high-quality appliances.

- Bespoke contemporary kitchen
- Quartz worktop
- Glass splash back
- Siemens hob
- Siemens oven
- Built-in Siemens microwave
- Integrated Siemens fridge-freezer
- Integrated Siemens dishwasher
- Baumatic wine cooler in larger kitchens
- Baumatic stainless steel extractor hood
- Large Franke under-mounted stainless steel sink with chrome tap



### Bathrooms

All the master bedrooms have their own en-suite bath or shower room. Bedrooms two and three have main bathroom access.

- Villeroy & Boch sanitary ware
- Large 120cm showers
- Rain showerheads
- Heated towel rails
- Wall mounted washbasin and taps
- WC with soft close seat and concealed cistern
- Vanity units
- Fully tiled walls and floors

### Electrical and fittings

- Wiring for wall hung plasma to Living Room and Bedroom 1
- Outlet for TV/SAT1/SAT2/FM-DAB to Living Room and all bedrooms
- External patio light and power socket
- Dual data/phone sockets
- Low voltage down lighters
- Digital satellite antenna
- Video door entry system



### Interior Finishes

Engineered oak flooring in hallways, kitchens, living and dining areas.

- Fitted wardrobes with mirrored doors in all the master bedrooms
- Hallway storage cupboard
- Utility cupboard with Siemens washer-dryer
- Double glazed aluminum framed windows
- Wool carpets in warm beige tones in all bedrooms
- White painted internal doors with polished chrome handles
- White eggshell painted skirting and architraves
- All walls and ceilings finished in white matt emulsion

### Heating/water

- Gas-fired energy efficient central heating
- Individual room control
- Wet underfloor heating

### Security

- Mains-powered smoke detectors with battery back-up to hallways (or where required for building regulations)
- Mains-powered carbon monoxide detector

### Communal facilities

- Large communal roof terrace on the 6th floor
- Bike storage with capacity of 88 bikes

These details are intended to give a general indication of the proposed specifications. Images are indicative only.

# Floorplans

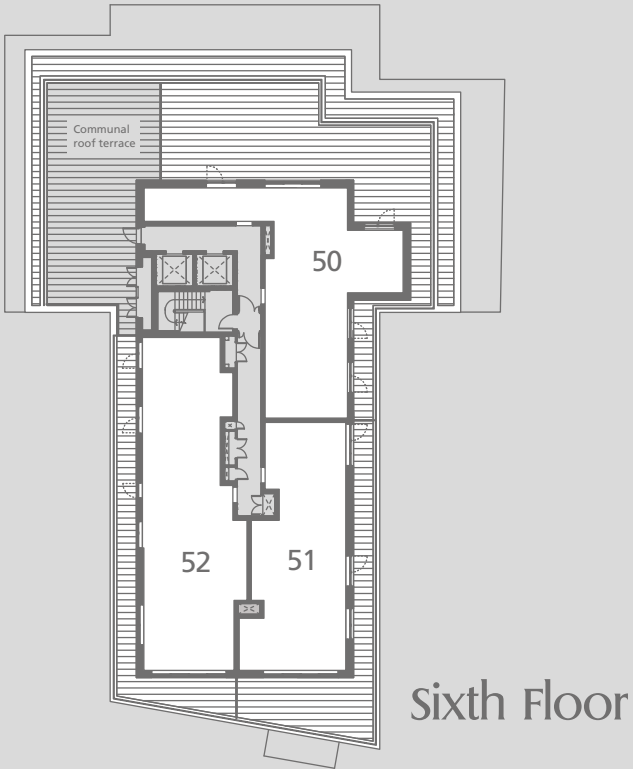
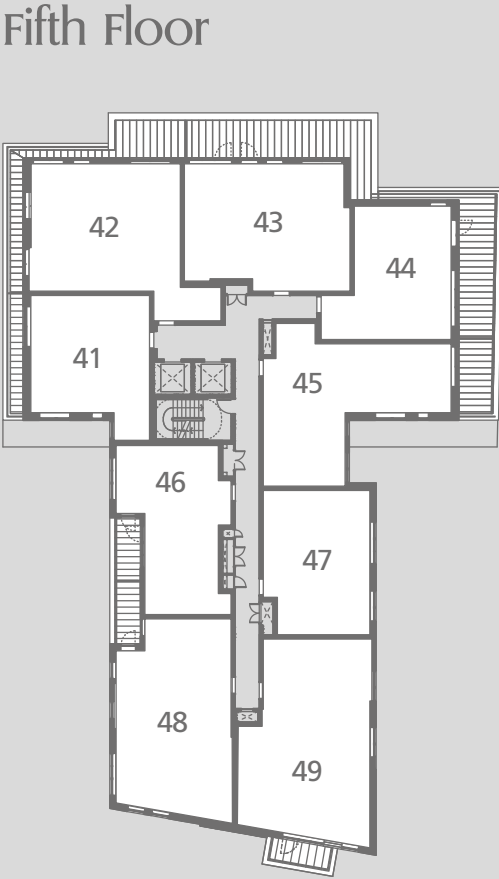
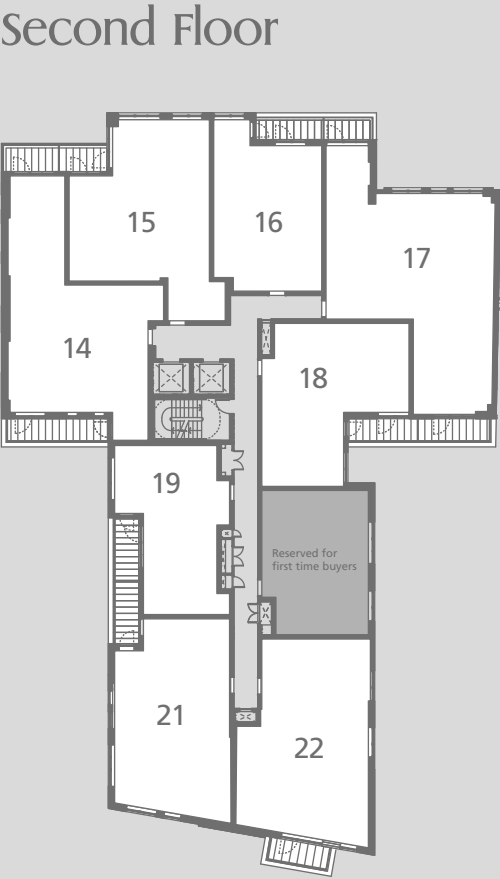
Glenbrook’s apartments are generously proportioned spaces designed to offer the best of modern living.



Ground Floor

Floor plans and dimensions are taken from architectural drawings and may vary during construction. They are provided for guidance only. Total areas are provided as Gross Internal Areas under RICS measuring practice. Layouts are indicative only and are subject to change.









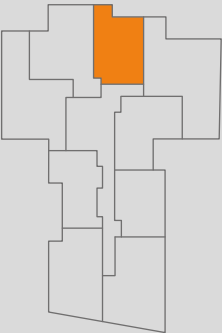
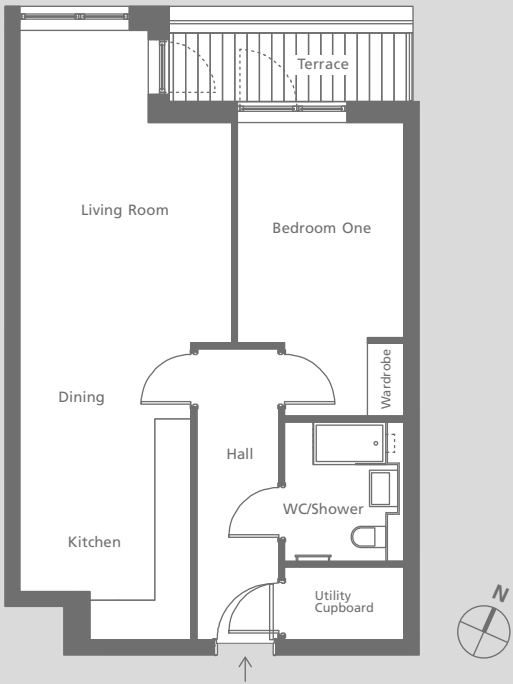


Apartments

7162534

Floor

1234



1 Bedroom Apartment

Room	Max size (m)	Max size (ft)
Living/Dining/Kitchen	3.5 x 10.0	11.5 x 33.0
Bedroom One	2.7 x 4.8	9.0 x 16.0
WC/Shower	1.8 x 2.3	6.1 x 7.5
Utility	1.9 x 2.1	6.4 x 6.9
Total Area	57.6 m <sup>2</sup>	620 ft <sup>2</sup>
Terrace	4.4 m <sup>2</sup>	47 ft <sup>2</sup>

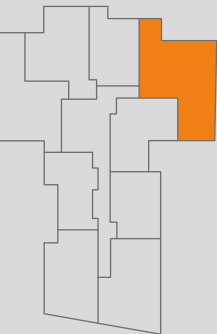
N.B. Denotes maximum measure

Apartments

8172635

Floor

1234



3 Bedroom Apartment

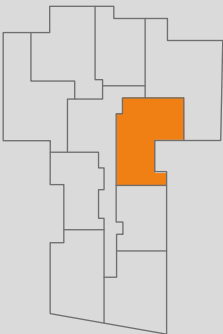
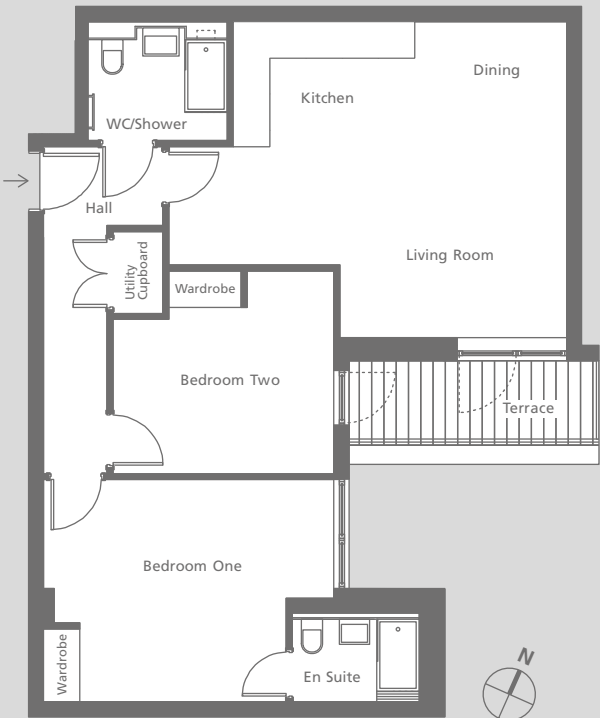
Room	Max size (m)	Max size (ft)
Living/Dining/Kitchen	4.7 x 9.4	15.5 x 31.0
Bedroom One	2.8 x 4.7	9.3 x 15.7
En-suite	1.4 x 2.1	4.6 x 6.9
Bedroom Two	3.8 x 4.1	10.0 x 13.7
Bedroom Three	3.0 x 4.1	12.7 x 3.7
WC/Shower	2.3 x 1.8	7.5 x 6.1
Utility	0.9 x 1.4	2.9 x 4.4
Total Area	106.5 m <sup>2</sup>	1146 ft <sup>2</sup>
Front Terrace	3.0 m <sup>2</sup>	32 ft <sup>2</sup>
Rear Terrace	6.0 m <sup>2</sup>	65 ft <sup>2</sup>

N.B. Denotes maximum measure



# Apartment 9

Floor 1



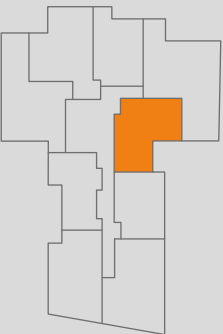
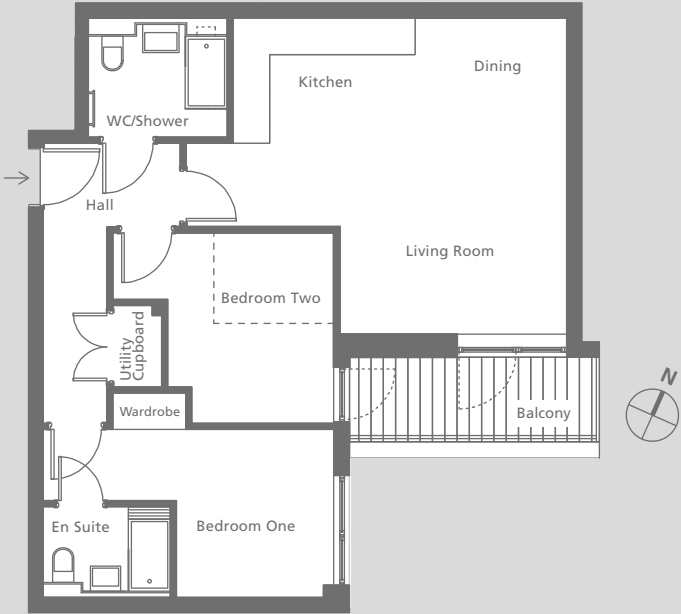
2 Bedroom Apartment

Room	Max size (m)	Max size (ft)
Living/Dining/Kitchen	6.5 x 5.2	21.6 x 17.1
Bedroom One	4.8 x 3.6	15.7 x 12.0
En-suite	2.1 x 1.4	6.9 x 4.4
Bedroom Two	3.6 x 3.3	12.0 x 11.0
WC/Shower	2.3 x 1.8	7.5 x 6.1
Utility	0.8 x 1.4	2.7 x 4.4
Total Area	75.6 m²	814 ft²
Terrace	5.7 m²	61 ft²

N.B. Denotes maximum measure

# Apartments 18 27 36

Floor 2 3 4



2 Bedroom Apartment

Room	Max size (m)	Max size (ft)
Living/Dining/Kitchen	6.2 x 5.2	20.6 x 17.1
Bedroom One	4.8 x 2.7	11.9 x 10.0
En-suite	2.1 x 1.4	6.9 x 4.4
Bedroom Two	3.6 x 3.1	12.0 x 10.3
WC/Shower	2.3 x 1.8	7.5 x 6.1
Utility	0.8 x 1.4	2.6 x 4.4
Total Area	65.2 m²	702 ft²
Balcony	5.7 m²	61 ft²

N.B. Denotes maximum measure



Apartments

19

28

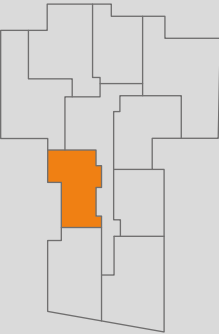
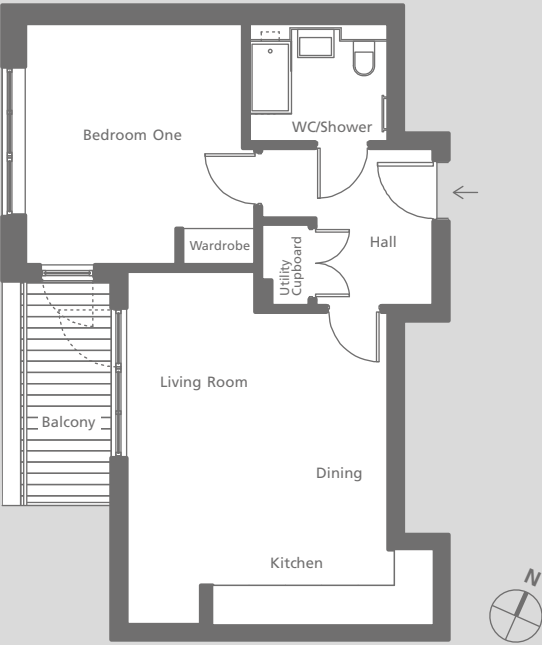
37

Floor

2

3

4



1 Bedroom Apartment		
Room	Max size (m)	Max size (ft)
Living/Dining/Kitchen	4.3 x 5.9	11.8 x 13.1
Bedroom One	3.6 x 4.0	14.1 x 19.5
WC/Shower	2.3 x 1.8	7.5 x 6.1
Utility	0.8 x 1.4	2.7 x 4.4
Total Area	53.4 m²	575 ft²
Balcony	5.5 m²	59 ft²
N.B. Denotes maximum measure		

Apartments

21

30

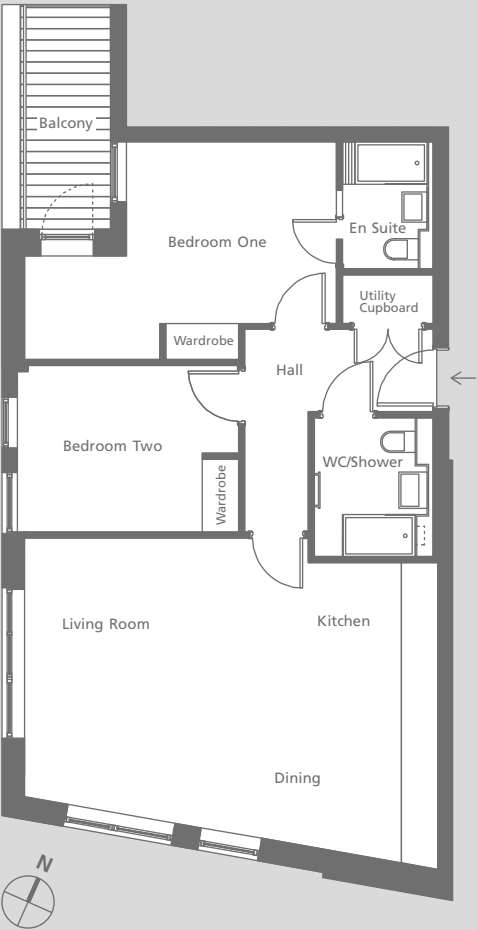
39

Floor

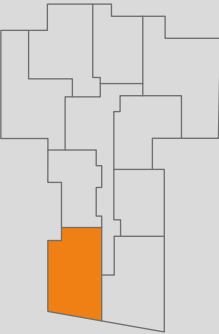
2

3

4



2 Bedroom Apartment		
Room	Max size (m)	Max size (ft)
Living/Dining/Kitchen	6.8 x 5.4	22.4 x 17.9
Bedroom One	5.2 x 3.6	17.0 x 11.8
En-suite	1.4 x 2.1	4.6 x 6.9
Bedroom Two	3.6 x 2.7	12.0 x 9.0
WC/Shower	1.8 x 2.3	6.1 x 7.5
Utility	1.5 x 0.8	4.9 x 2.6
Total Area	76.4 m²	822 ft²
Balcony	5.5 m²	59 ft²
N.B. Denotes maximum measure		



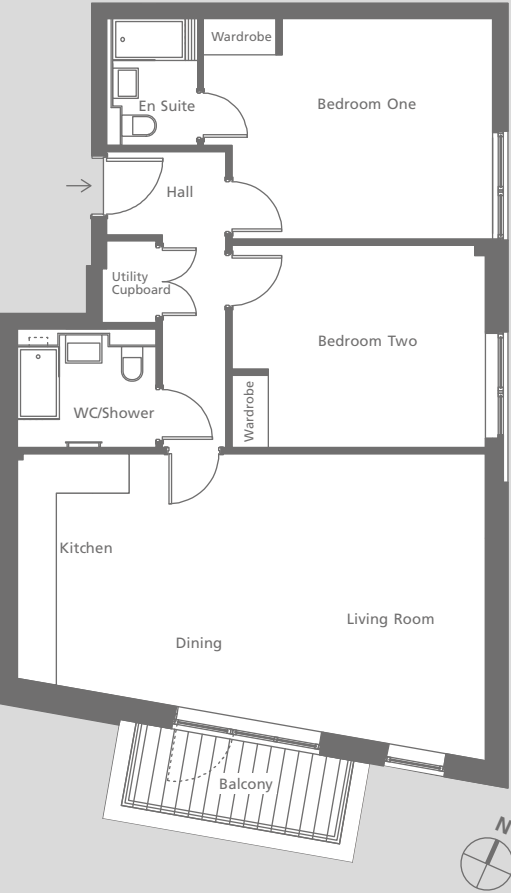


Apartments

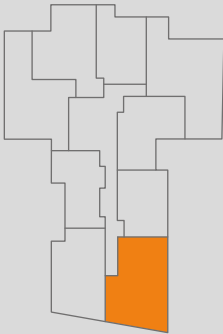
223140

Floor

234



2 Bedroom Apartment		
Room	Max size (m)	Max size (ft)
Living/Dining/Kitchen	7.8 x 5.0	25.4 x 16.6
Bedroom One	4.7 x 3.6	15.7 x 12.0
En-suite	1.4 x 2.1	4.6 x 6.9
Bedroom Two	4.1 x 3.3	13.7 x 11.0
WC/Shower	2.3 x 1.8	7.5 x 6.1
Utility	0.8 x 1.4	2.7 x 4.4
Total Area	84.2 m²	906 ft²
Balcony	5.1 m²	55 ft²
N.B. Denotes maximum measure		

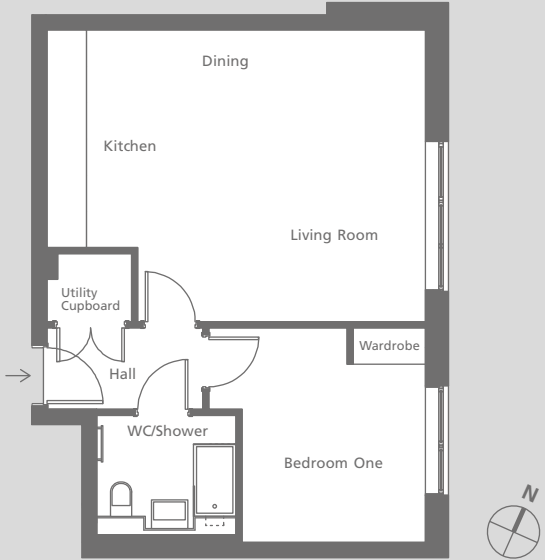


Apartments

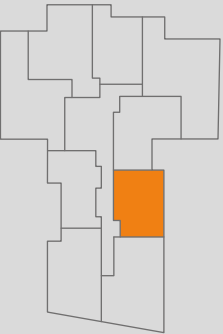
3847

Floor

45



1 Bedroom Apartment		
Room	Max size (m)	Max size (ft)
Living/Dining/Kitchen	6.2 x 4.8	20.5 x 15.8
Bedroom One	3.6 x 3.5	11.7 x 11.6
WC/Shower	2.3 x 1.8	7.5 x 6.1
Utility	1.4 x 1.1	4.6 x 3.7
Total Area	52.1 m²	561 ft²
N.B. Denotes maximum measure		



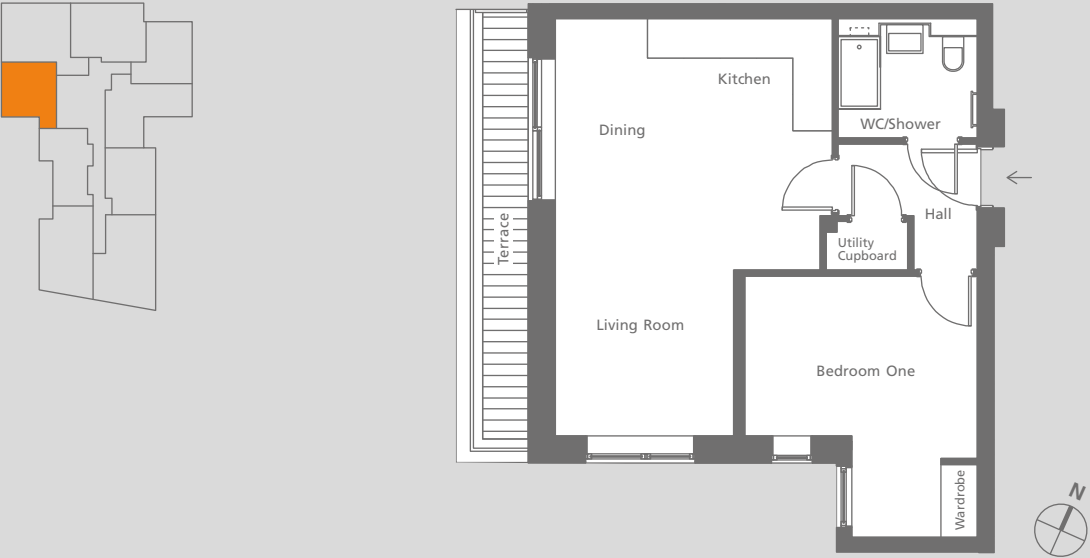


Apartment

41

Floor

5



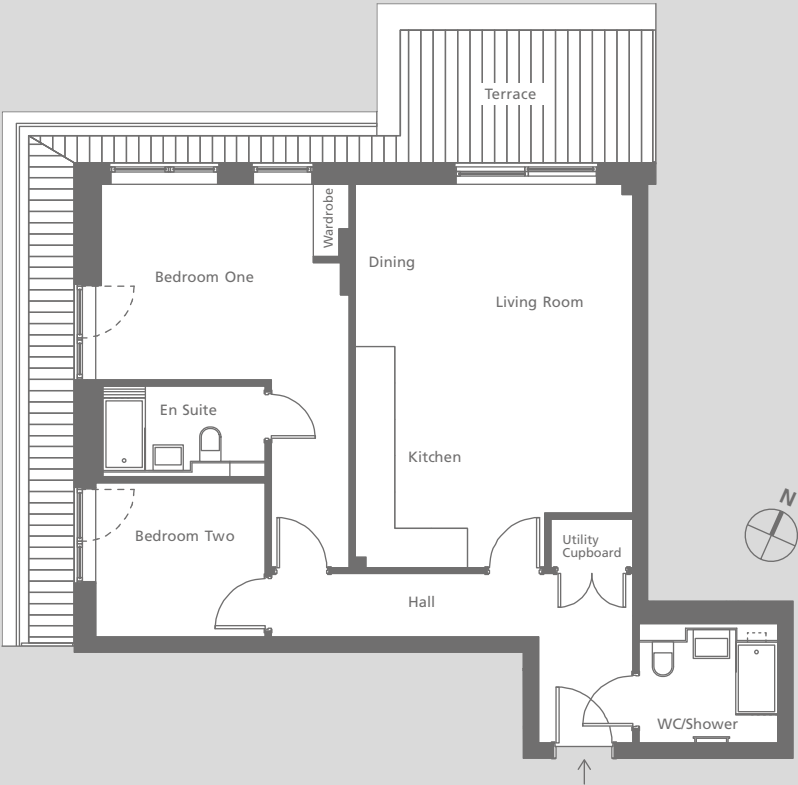
1 Bedroom Apartment		
Room	Max size (m)	Max size (ft)
Living/Dining/Kitchen	4.5 x 6.9	15.0 x 22.6
Bedroom One	3.8 x 4.3	12.6 x 14.2
WC/Shower	2.3 x 1.8	7.5 x 6.1
Utility	1.4 x 0.8	4.4 x 2.6
Total Area	53.0 m²	571 ft²
N.B. Denotes maximum measure		

Apartment

42

Floor

5

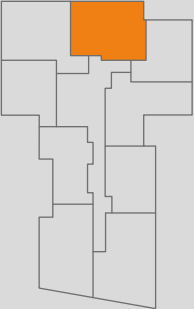


2 Bedroom Apartment		
Room	Max size (m)	Max size (ft)
Living/Dining/Kitchen	4.6 x 6.3	15.0 x 20.8
Bedroom One	4.1 x 3.2	13.5 x 10.6
En-suite	2.6 x 1.4	8.8 x 4.6
Bedroom Two	2.8 x 2.6	9.2 x 8.7
WC/Shower	2.3 x 1.8	7.5 x 6.1
Utility	1.4 x 0.8	4.4 x 2.6
Total Area	75.5 m²	813 ft²
N.B. Denotes maximum measure		



# Apartment 43

Floor 5



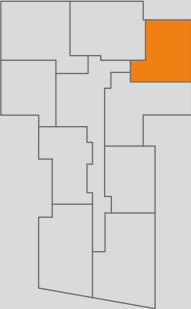
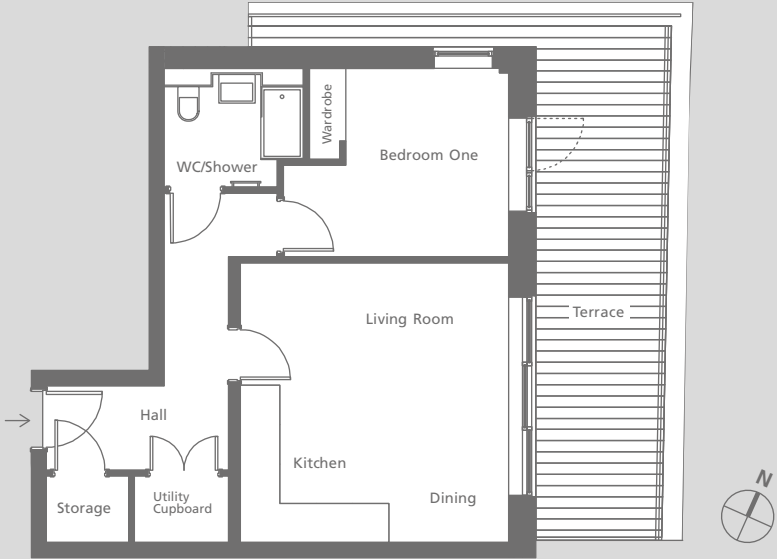
2 Bedroom Apartment

Room	Max size (m)	Max size (ft)
Living/Dining/Kitchen	3.8 x 7.5	12.5 x 24.6
Bedroom One	2.8 x 4.7	9.2 x 15.4
En-suite	1.4 x 2.1	4.6 x 6.9
Bedroom Two	2.9 x 3.5	9.4 x 11.6
WC/Shower	2.3 x 1.8	7.5 x 6.1
Utility	0.8 x 1.4	2.6 x 4.4
Storage	0.8 x 1.2	2.6 x 4.1
Total Area	70.6 m <sup>2</sup>	760 ft <sup>2</sup>
Terrace	26.8 m <sup>2</sup>	289 ft <sup>2</sup>

N.B. Denotes maximum measure

# Apartment 44

Floor 5



1 Bedroom Apartment

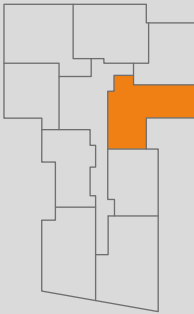
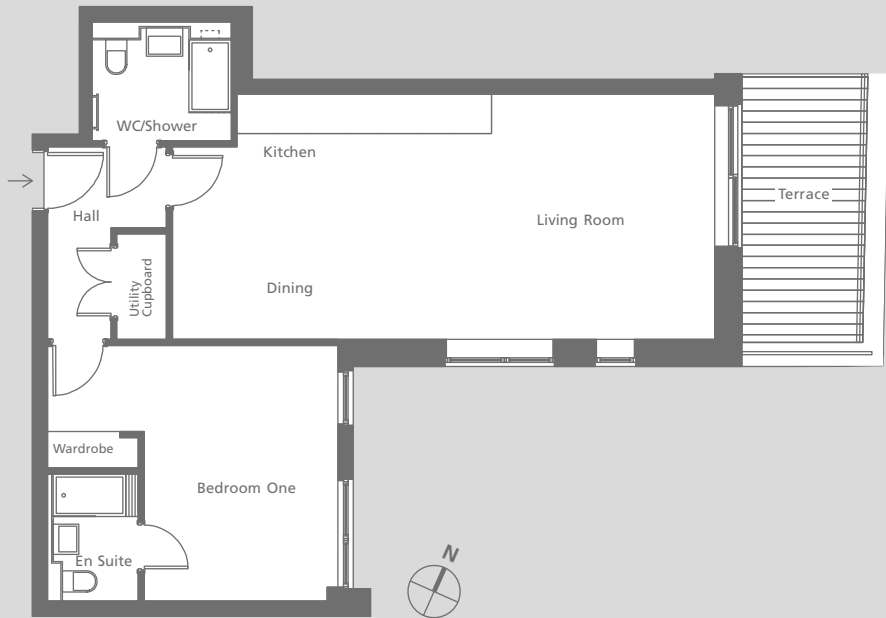
Room	Max size (m)	Max size (ft)
Living/Dining/Kitchen	4.4 x 4.6	14.5 x 15.2
Bedroom One	3.7 x 3.1	12.2 x 10.2
WC/Shower	2.3 x 1.8	7.5 x 6.1
Utility	1.5 x 1.1	5.0 x 3.6
Storage	1.3 x 1.1	4.4 x 3.6
Total Area	51.1 m <sup>2</sup>	550 ft <sup>2</sup>
Terrace	20.0 m <sup>2</sup>	215 ft <sup>2</sup>

N.B. Denotes maximum measure



# Apartment 45

Floor 5



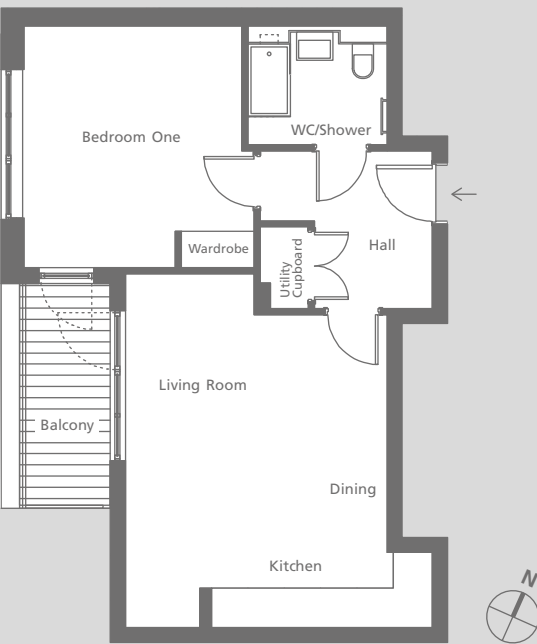
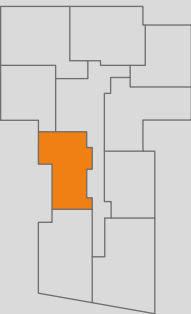
1 Bedroom Apratment

Room	Max size (m)	Max size (ft)
Living/Dining/Kitchen	8.9 x 4.0	29.4 x 13.3
Bedroom One	4.8 x 4.2	15.7 x 13.8
WC/Shower	2.3 x 1.8	7.5 x 6.1
Utility	0.8 x 1.7	2.6 x 5.7
Total Area	69.2 m²	745 ft²
Terrace	9.0 m²	97 ft²

N.B. Denotes maximum measure

# Apartment 46

Floor 5



1 Bedroom Apartment

Room	Max size (m)	Max size (ft)
Living/Dining/Kitchen	4.3 x 5.9	11.8 x 13.1
Bedroom One	3.6 x 4.0	14.1 x 19.5
WC/Shower	2.3 x 1.8	7.5 x 6.1
Utility	0.8 x 1.4	2.7 x 4.4
Total Area	53.4 m²	575 ft²
Balcony	5.5 m²	59 ft²

N.B. Denotes maximum measure

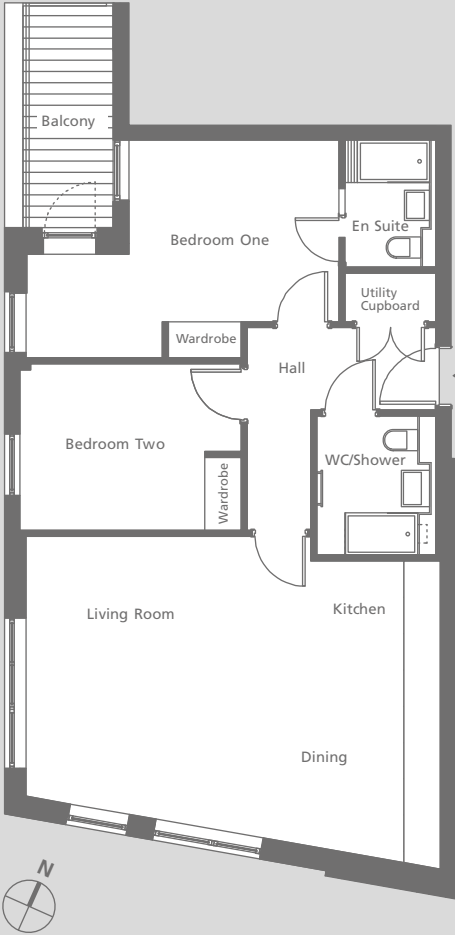


Apartment

48

Floor

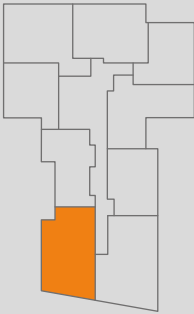
5



2 Bedroom Apratment

Room	Max size (m)	Max size (ft)
Living/Dining/Kitchen	6.8 x 5.4	22.4 x 17.9
Bedroom One	5.2 x 3.6	17.0 x 11.8
En Suite	1.4 x 2.1	4.6 x 6.9
Bedroom Ttwo	3.6 x 2.7	12.0 x 9.0
WC/Shower	1.8 x 2.3	6.1 x 7.5
Utility	1.5 x 0.8	4.9 x 2.6
Total Area	76.6 m²	825 ft²
Balcony	5.5 m²	59 ft²

N.B. Denotes maximum measure

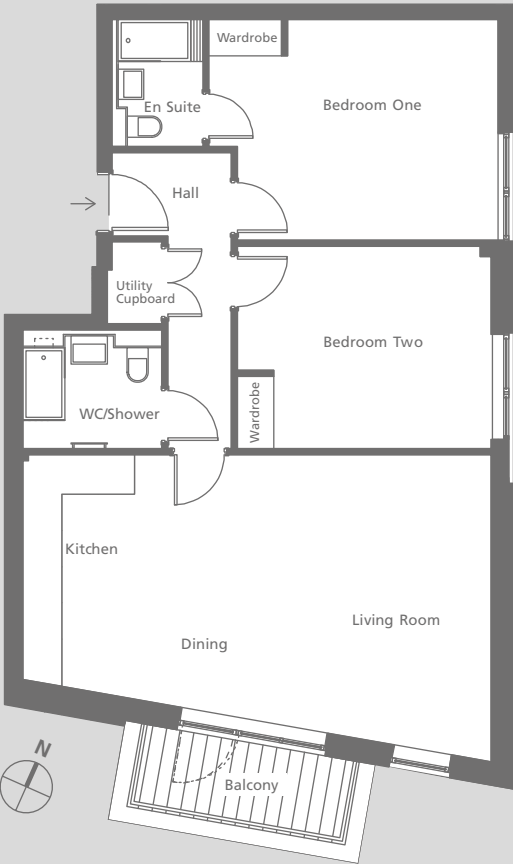


Apartment

49

Floor

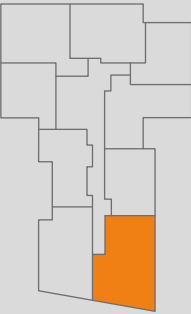
5



2 Bedroom Apartment

Room	Max size (m)	Max size (ft)
Living/Dining/Kitchen	7.8 x 5.0	25.4 x 16.6
Bedroom One	4.7 x 3.6	15.7 x 12.0
En-suite	1.4 x 2.1	4.6 x 6.9
Bedroom Two	4.1 x 3.3	13.7 x 11.0
WC/Shower	2.3 x 1.8	7.5 x 6.1
Utility	0.8 x 1.4	2.7 x 4.4
Total Area	84.2 m²	906 ft²
Balcony	5.1 m²	55 ft²

N.B. Denotes maximum measure



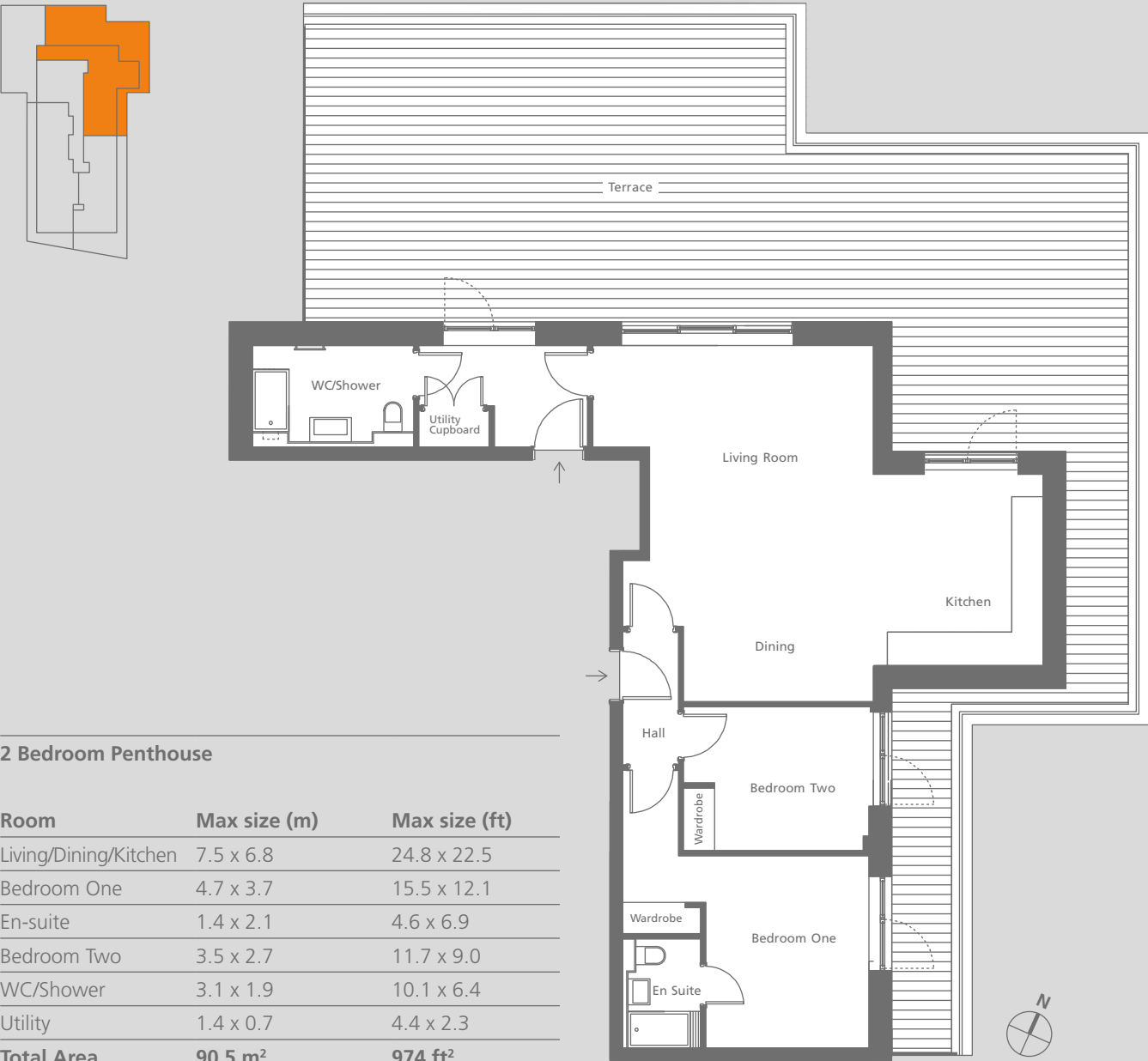


Penthouse

50

Floor

6



2 Bedroom Penthouse

Room	Max size (m)	Max size (ft)
Living/Dining/Kitchen	7.5 x 6.8	24.8 x 22.5
Bedroom One	4.7 x 3.7	15.5 x 12.1
En-suite	1.4 x 2.1	4.6 x 6.9
Bedroom Two	3.5 x 2.7	11.7 x 9.0
WC/Shower	3.1 x 1.9	10.1 x 6.4
Utility	1.4 x 0.7	4.4 x 2.3
Total Area	90.5 m <sup>2</sup>	974 ft <sup>2</sup>
Terrace	100.5 m <sup>2</sup>	1082 ft <sup>2</sup>

N.B. Denotes maximum measure

Penthouse

51

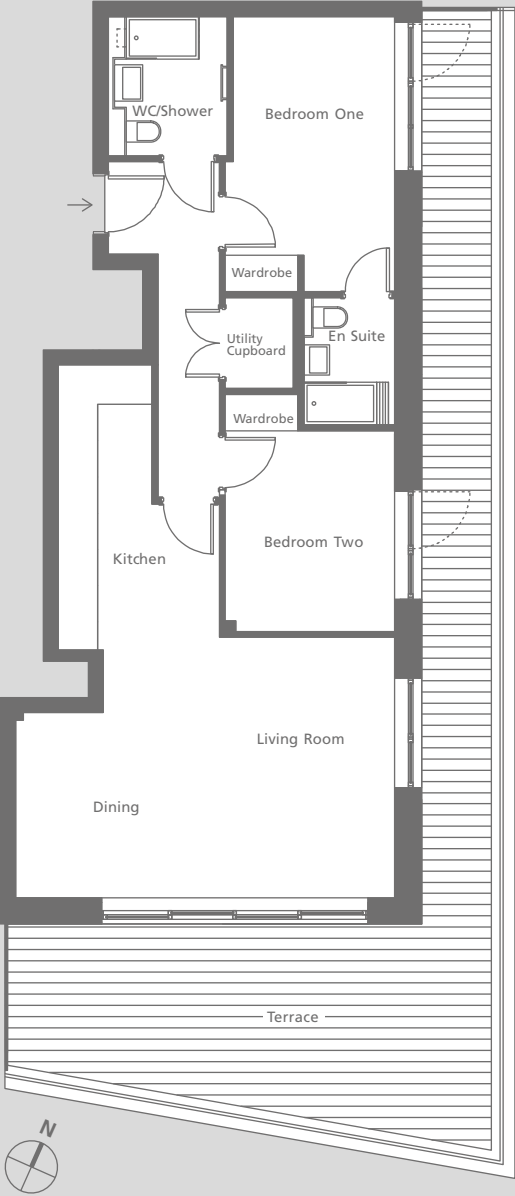
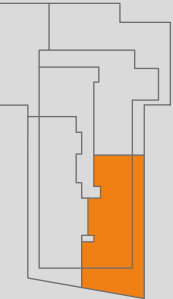
Floor

6

2 Bedroom Penthouse

Room	Max size (m)	Max size (ft)
Living/Dining/Kitchen	6.2 x 6.5	20.5 x 21.3
Bedroom One	2.8 x 4.5	9.2 x 14.9
En-suite	1.5 x 2.1	4.9 x 6.9
Bedroom Two	2.8 x 3.3	9.2 x 10.8
WC/Shower	1.8 x 2.3	6.1 x 7.5
Utility	1.1 x 1.5	3.6 x 4.9
Total Area	78.6 m <sup>2</sup>	846 ft <sup>2</sup>
Terrace	41.6 m <sup>2</sup>	448 ft <sup>2</sup>

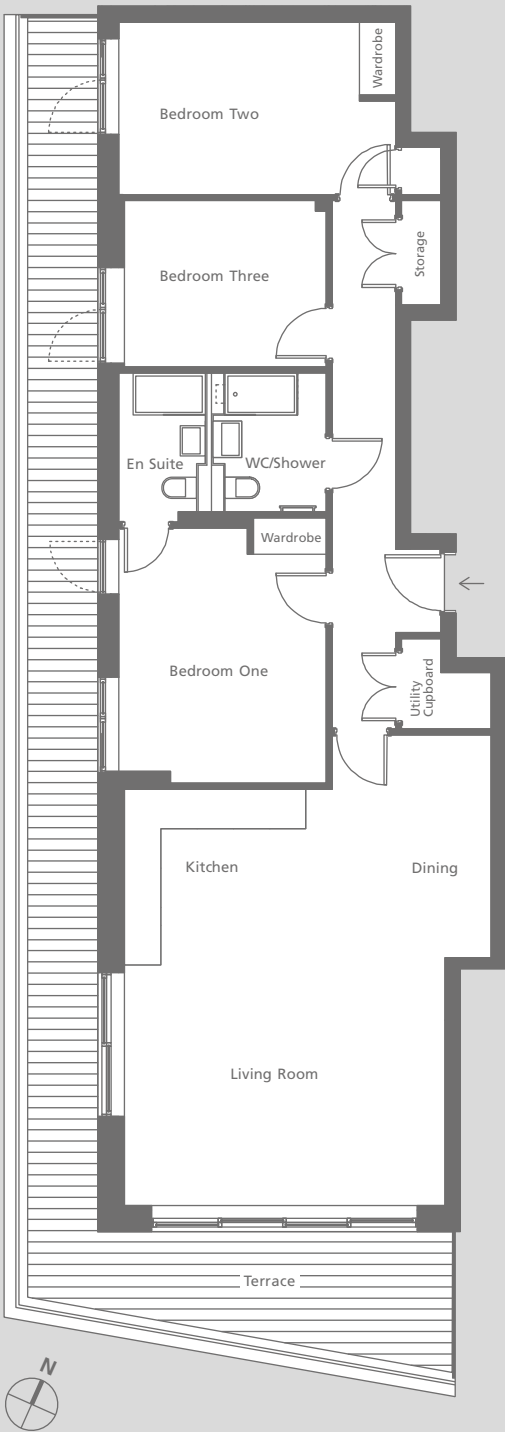
N.B. Denotes maximum measure





# Penthouse 52

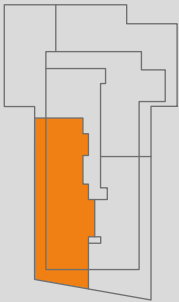
Floor 6



3 Bedroom Penthouse

Room	Max size (m)	Max size (ft)
Living/Dining/Kitchen	6.0 x 7.7	19.8 x 25.5
Bedroom One	3.4 x 4.2	11.2 x 13.8
En-suite	1.4 x 2.4	4.6 x 8.0
Bedroom Two	4.5 x 2.8	15.0 x 9.3
Bedroom Three	3.3 x 2.7	11.0 x 9.0
WC/Shower	1.8 x 2.3	6.1 x 7.5
Utility	1.4 x 1.5	4.8 x 4.9
Storage	0.7 x 1.7	2.1 x 5.6
<b>Total Area</b>	<b>105.0 m²</b>	<b>1130 ft²</b>
Terrace	35.0 m²	113 ft²

N.B. Denotes maximum measure



# Places of thoughtful quality



Our philosophy is a simple one; quality counts above all else. Accordingly, attention to detail is a priority in how we do business. By anticipating our client's needs, we are able to craft homes that are ready for living. At each development we aim to provide ideal apartments for today's

contemporary urban lifestyles. These are carefully designed and built for those who appreciate that a home is more than just the place you live - it is a reflection of who you are.

In short, Loncor Homes brings you the very best in London living.



03



## Our developments reveal our passion for quality.

Each individual development speaks for itself and Glenbrook is the latest collection of superior homes we have created to deliver a striking blend of style and practicality.

- 01 Designed and built for elevated living. A luxury apartment development in London.
- 02 Generous and beautifully proportioned spaces. A luxury family home in Putney London.
- 03 Abundance of natural light and quality finishes. A townhouse development in London.

02



---

# Contact

---

Glenbrook  
85 Glenthorne Road  
Hammersmith  
London W6 0LJ

This is home  
07904 559083  
  
Thisishomeuk.com

**Photography**  
Achim Hepp, Andy Wilkes, Artisan Coffee, Charlotte Machin, Cristiano Betta, David Woo, Fimb, Gaetan Lee, Garry Knight, George Ornbo, George Rex, Greg Knapp, James Cridland, JJ Hall, Jason Hawkes, Michael Garnett, Matt Hints, Mattj Herring, Maureen Barlin, Nico Hogg, Robert Gray, Rob Roy, Rob Sinclair, Rupert Ganzer, Samuel Rönqvist, The Lyric Hammersmith, The Stonemasons Arms, Vera Blossom.

**Disclaimer**  
The content of this brochure is designed for marketing purposes only, and are only intended to provide an overview of the property. Floor plans and dimensions are taken from architectural drawings and may vary during construction. They are provided for guidance only. Total areas are provided as Gross Internal Areas under RICS measuring practice. The information is not to be taken as forming any part of a resulting contract, nor be relied upon as a statement or representations of fact.

Whilst every care has been taken in their preparation, no liability can be accepted for their inaccuracy. Intended purchasers must satisfy themselves as to the correctness of these particulars which are issued on the understanding that all negotiations are conducted through the developer or his agent. These particulars are believed to be correct at the time of issue and any areas, measurements, dimensions, distances or products referred to are indicative only and have been taken from architects current drawings which may be subject to change during the course of construction. In view of our continuing improvement policy the detailed specification and/or layouts may change.

Maps are not to scale and show approximate locations only.

Branding and design: Principal Ingredient

---

