

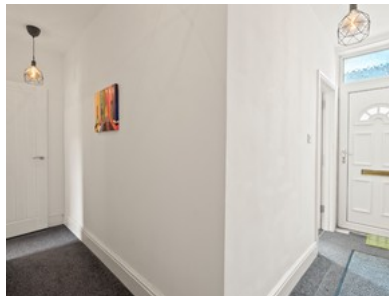
# Blakefield Road Worcester



**Platinum**  
PROPERTY AGENTS



- ✓ Sought-after St Johns Location
- ✓ Ideal For First-time Buyers And Families
- ✓ Close To Local Amenities, Schools, And Worcester City Centre
- ✓ Three Bedrooms, Including A Converted Attic Room
- ✓ Brand-new Fitted Kitchen
- ✓ Two Spacious Reception Rooms
- ✓ Contemporary New Bathroom
- ✓ Private Rear Garden
- ✓ No Onward Chain, Ensuring A Smoother Purchase
- ✓ Epc - C



Bedroom  3 Bathroom  1 Reception  2

Offers Over

**£210,000**