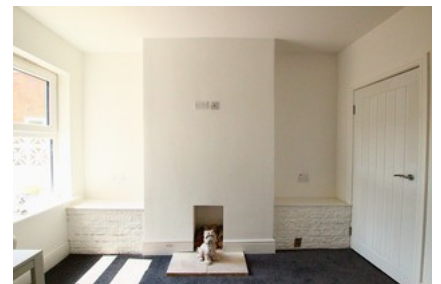
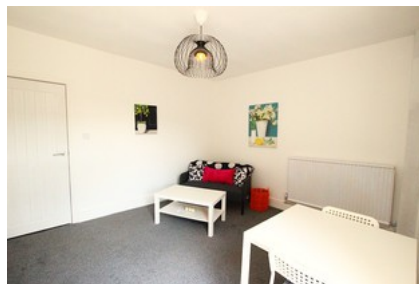




## Blakefield Road Worcester



- ✓ Sought-after St Johns Location
- ✓ Ideal For First-time Buyers And Families
- ✓ Close To Local Amenities, Schools, And Worcester City Centre
- ✓ Three Bedrooms, Including A Converted Attic Room
- ✓ Brand-new Fitted Kitchen
- ✓ Two Spacious Reception Rooms
- ✓ Contemporary New Bathroom
- ✓ Private Rear Garden

Offers Over **£215,000**

Bedroom  3 Bathroom  1 Reception  2