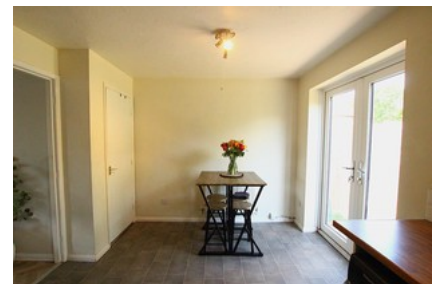
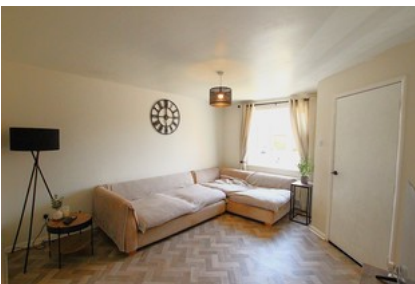




Dormouse Croft Worcester



- ✓ Three-bedroom Semi-detached Home
- ✓ Quiet Cul-de-sac Location In St Peters
- ✓ Spacious Living Room With Natural Light
- ✓ Open-plan Kitchen/diner With Garden Access
- ✓ Modern Family Bathroom And Downstairs Wc
- ✓ Private, Enclosed Rear Garden
- ✓ Driveway Parking For Multiple Vehicles
- ✓ Ideal For Families, First-time Buyers, Or Investors

OIRO

£265,000

Bedroom 3 Bathroom 2 Reception 1