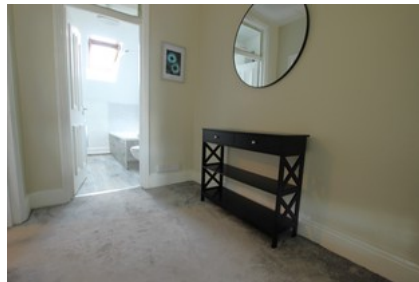




36 Droitwich Road Worcester



- ✓ Perfect For First Time Buyers Or Investment Opportunity
- ✓ No Onward Chain
- ✓ One (1) Bedroom Flat
- ✓ Communal Entrance

- ✓ Second Floor
- ✓ Two (2) Parking Spaces
- ✓ Ideal Location Near Worcester City Centre
- ✓ Share Of Freehold

Guide Price **£100,000**

Bedroom  1 Bathroom  1 Reception  1