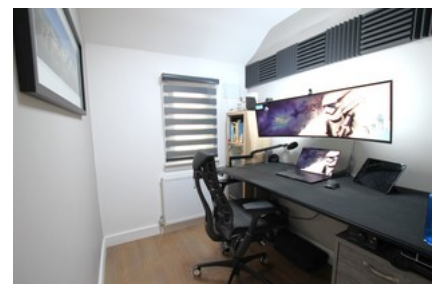
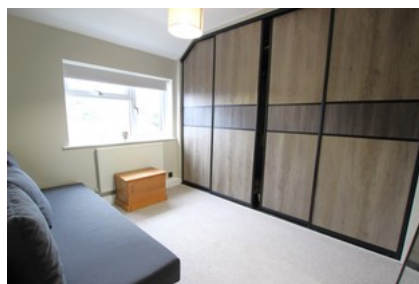




Kingsbury Road Worcester



- ✓ Three (3) Bedroom Mid Terraced House
- ✓ Electric Car Charging Port
- ✓ Living Room
- ✓ Fitted Kitchen With French Doors
- ✓ Bathroom
- ✓ Spacious Rear Garden
- ✓ Off-road Parking For Two Cars And Garage
- ✓ Additional Loft Room Accessed By A Loft Ladder
- ✓ Ideal For Professionals Or Family
- ✓ Rent Potential Of 1200pcm

Offers Over **£270,000**

Bedroom 3 Bathroom 1 Reception 2