

The logo for Oakheart, featuring the word "oakheart" in a white, lowercase, sans-serif font, positioned in the upper right corner of the image.

oakheart

£325,000

Asking Price

Bond Street, Chelmsford



Nestled in the vibrant heart of Chelmsford, this purpose-built flat on Bond Street offers a delightful blend of modern living and convenience. Spanning an impressive 699 square feet, this well-appointed residence features two spacious bedrooms and two contemporary bathrooms, making it an ideal choice for professionals, couples, or small families seeking a comfortable urban lifestyle.

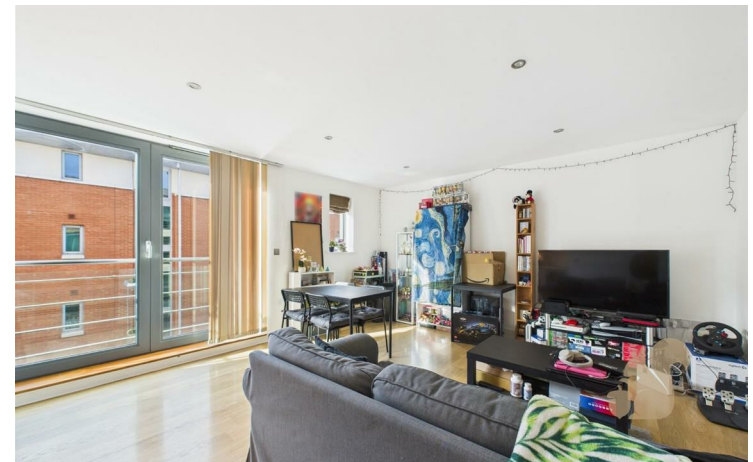
Constructed in 2007, the flat boasts a stylish design that complements its city centre location. The open-plan reception room provides a

welcoming space for relaxation and entertaining, while large windows allow natural light to flood the area, creating a warm and inviting atmosphere. The well-equipped kitchen is perfect for culinary enthusiasts, offering ample storage and workspace.

One of the standout features of this property is its proximity to the picturesque River Chelmer, providing a serene backdrop for leisurely strolls or outdoor activities. Living in the city centre means you are just moments away from a variety of shops, restaurants, local amenities, and

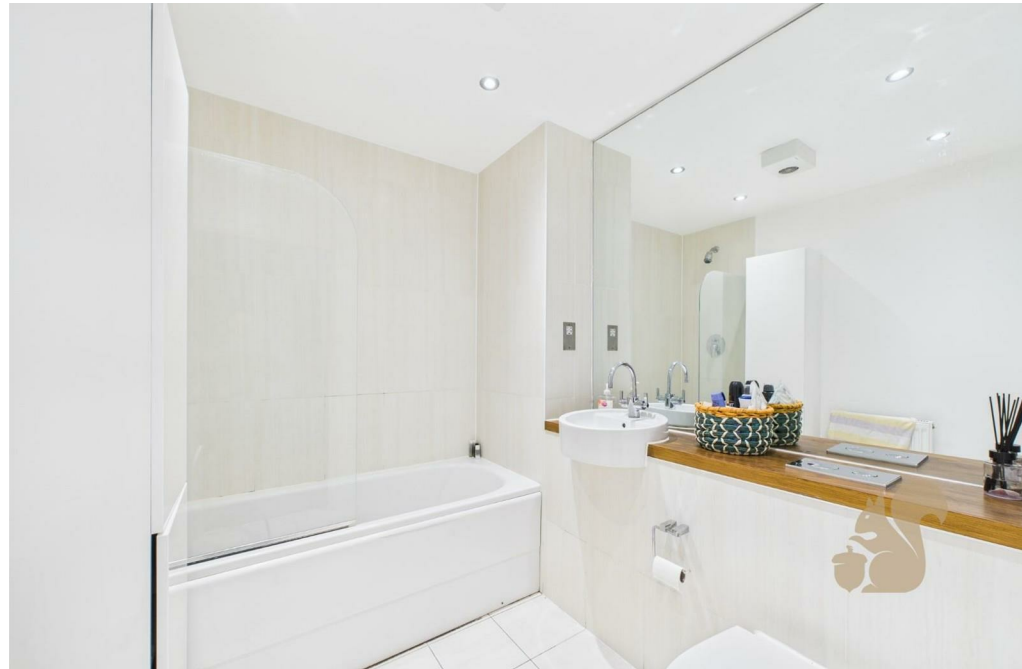
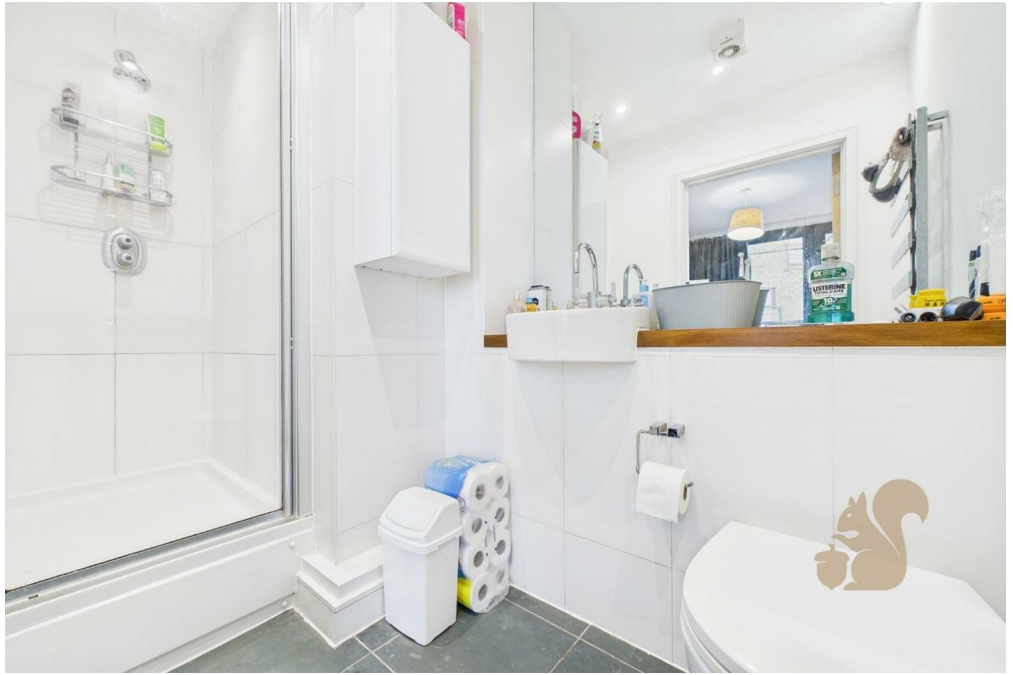
on top of that the area provides a variety of schools for all age groups paying particular attention to the local grammar schools

This flat is offered chain-free, allowing for a smooth and hassle-free purchase process. Whether you are looking to invest in a property or seeking a new home, this flat on Bond Street presents an excellent opportunity to enjoy the best of Chelmsford living. Don't miss your chance to make this charming residence your own.

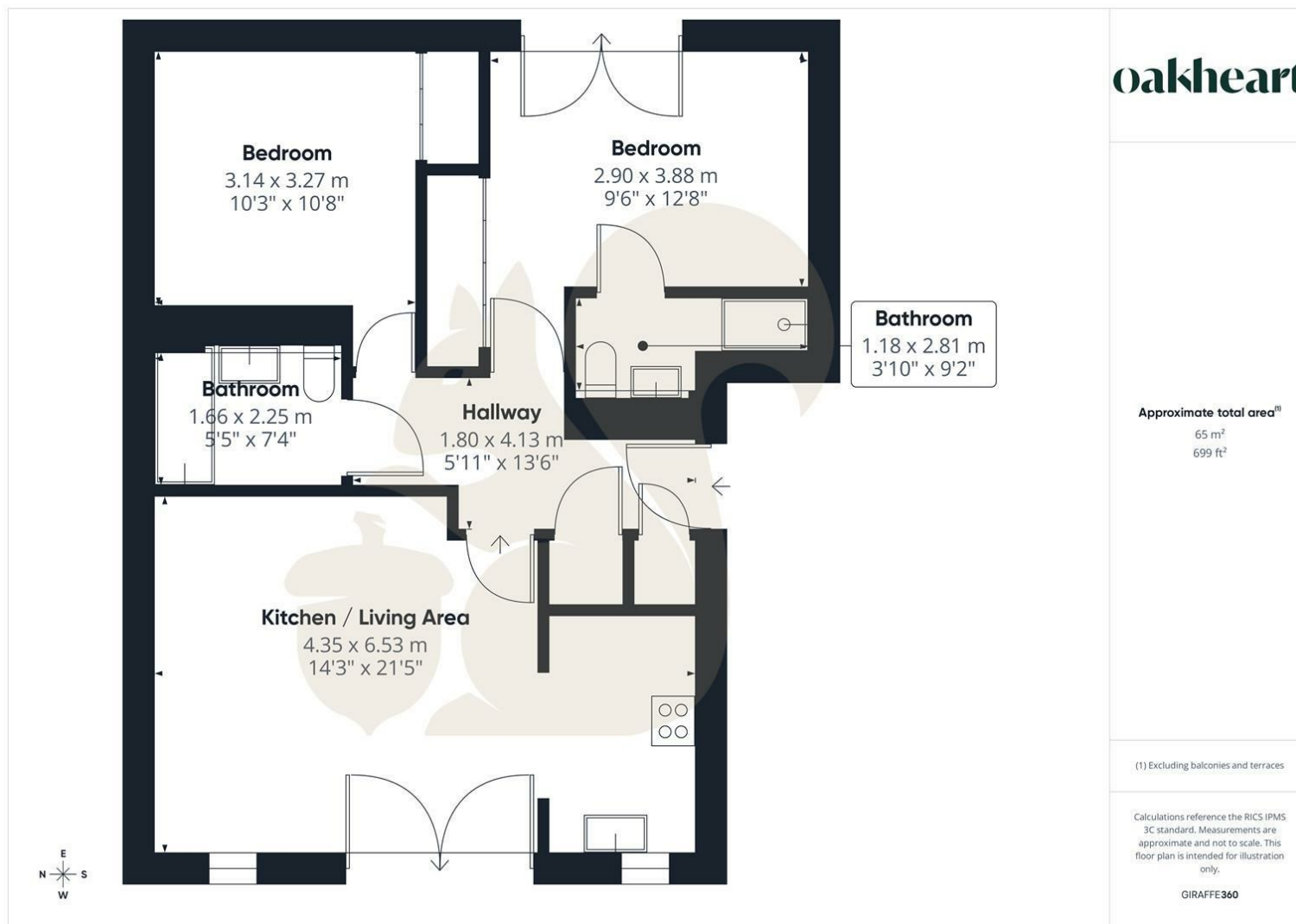












Local Authority:

Tenure:  
Leasehold

Council Tax Band:  
D

Energy Efficiency Rating		
	Current	Potential
Very energy efficient - lower running costs		
(92 plus) A		
(81-91) B	83	83
(69-80) C		
(55-68) D		
(39-54) E		
(21-38) F		
(1-20) G		
Not energy efficient - higher running costs		
England & Wales		EU Directive 2002/91/EC

Agents Note: Whilst every care has been taken to prepare these particulars, they are for guidance purposes only. All measurements are approximate and are for general guidance purposes only and whilst every care has been taken to ensure their accuracy, they should not be relied upon.

Oakheart Chelmsford  
01245 800181  
chelmsford@oakheart.co.uk  
20 Victoria Road, Chelmsford, Essex, CM1 1PA

oakheart