

oakheart



£300,000

Offers In Excess Of
Arundel Road, Wickford

Nestled on Arundel Road in Wickford, this charming three-bedroom mid-terrace house presents an excellent opportunity for those looking to create their dream home. While the property is in need of modernisation, it offers a blank canvas for potential buyers to infuse their personal style and preferences.

Upon entering, you will find a welcoming reception room that provides a comfortable space for relaxation and entertaining. The three well-proportioned bedrooms offer ample room for

family living or guest accommodation. The property also features a shower room, which, serves its purpose well.

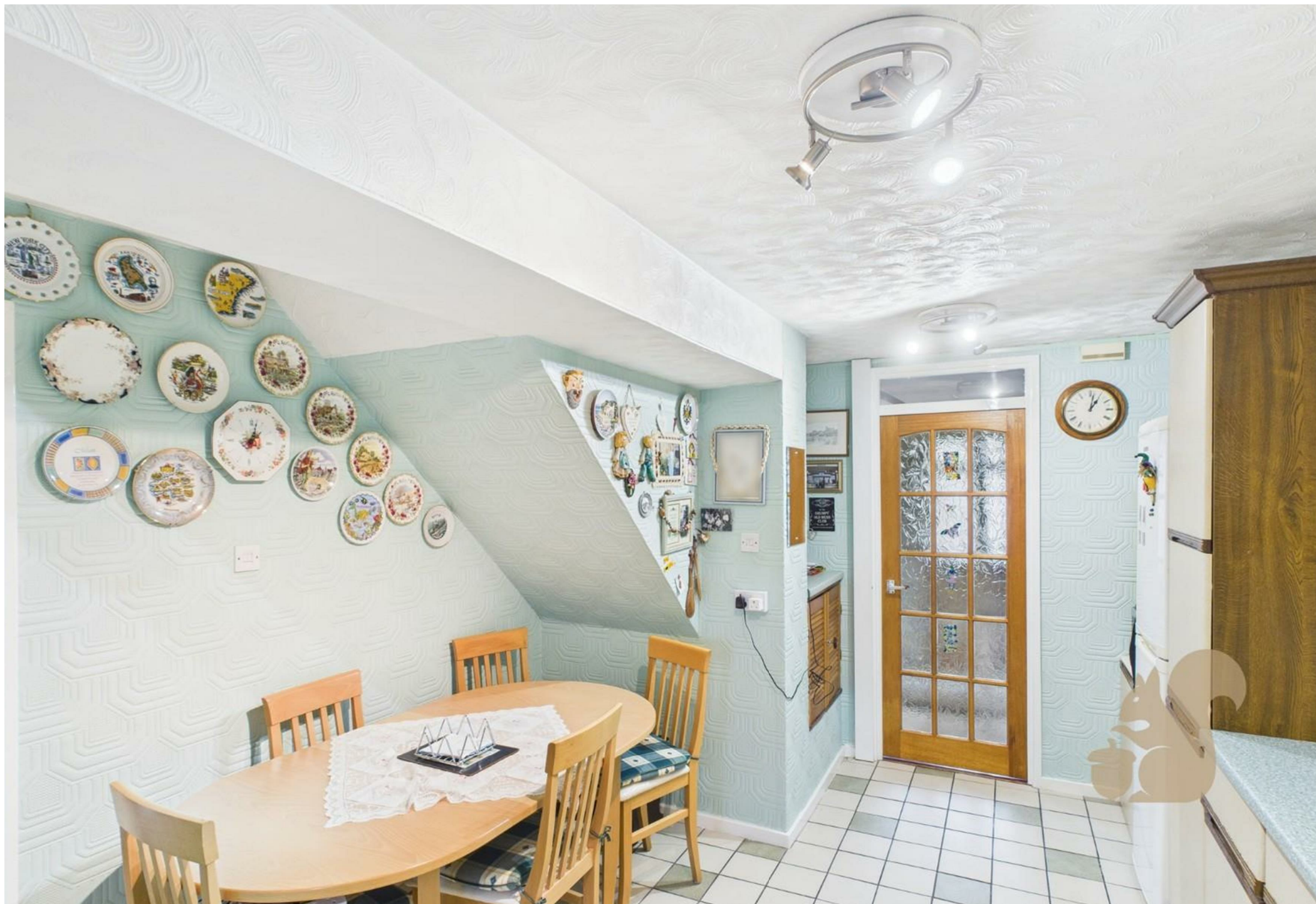
One of the standout features of this home is the generous garden, perfect for outdoor activities, gardening, or simply enjoying the fresh air. Additionally, off-street parking is available, providing convenience and ease for residents and visitors alike.

Situated conveniently for Wickford mainline train station, this

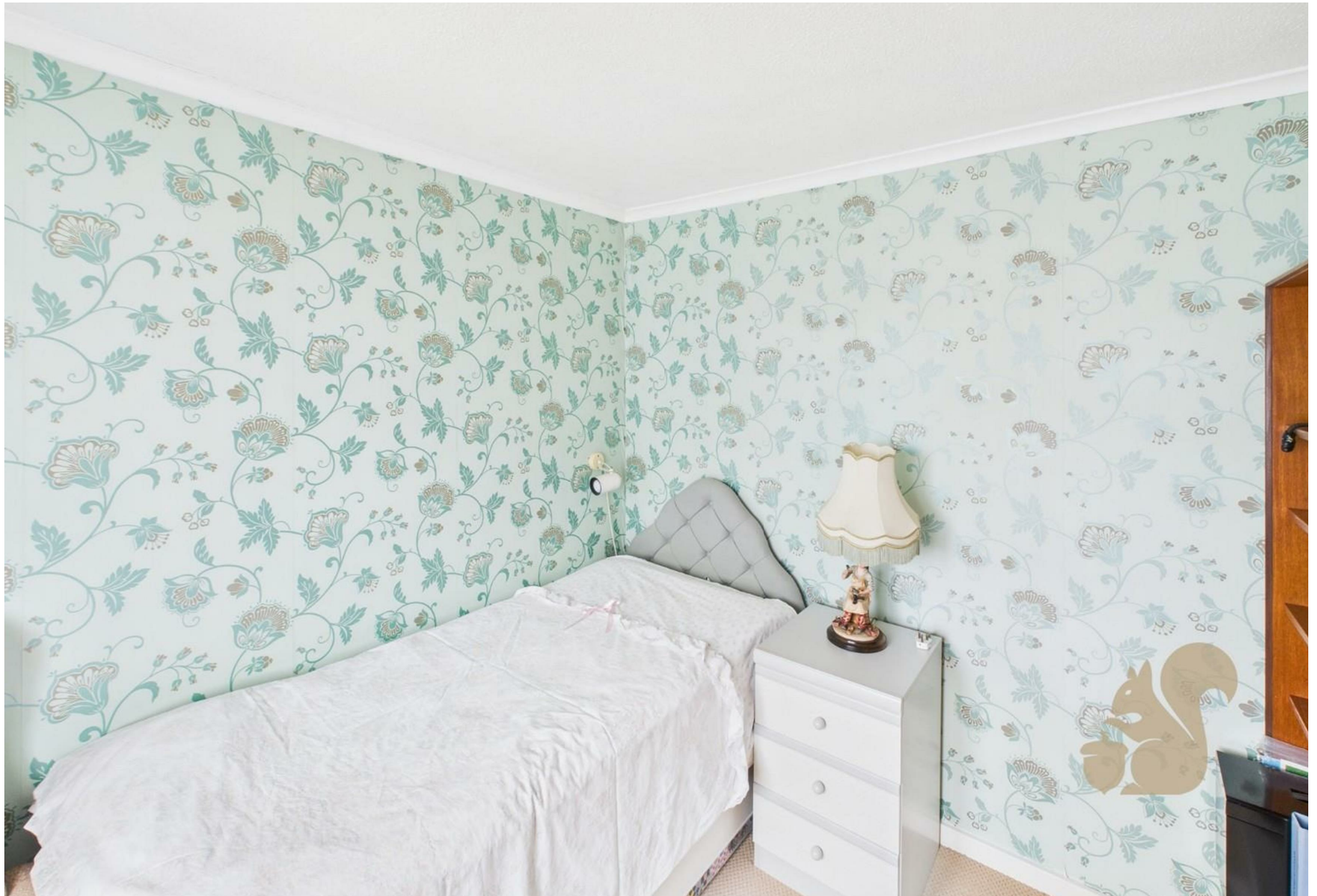
property is ideal for commuters seeking quick access to London and beyond. With no onward chain, the process of moving in can be swift and straightforward.

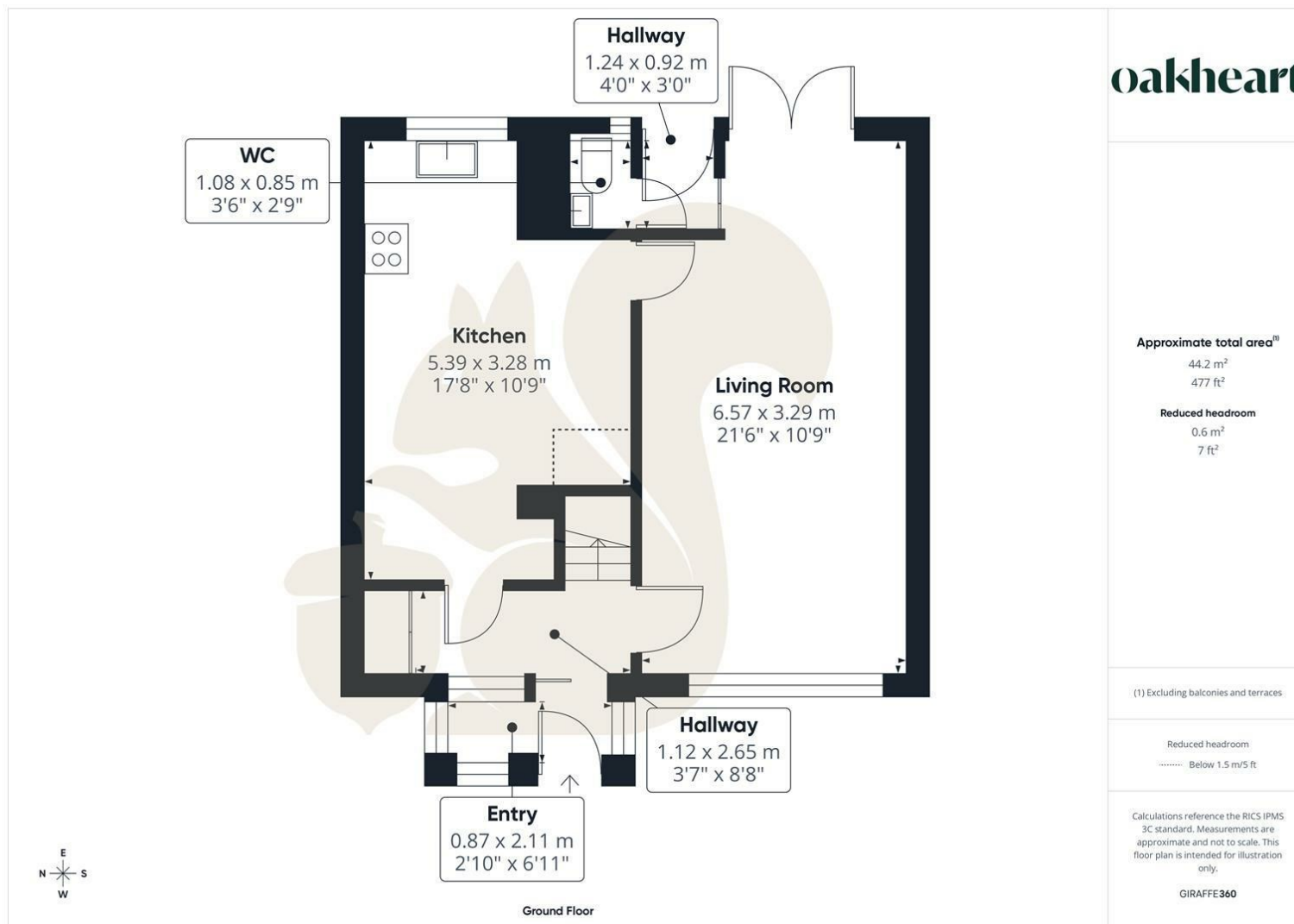
This mid-terrace house on Arundel Road is a fantastic opportunity for those willing to invest in a property with great potential. Whether you are a first-time buyer or looking for a project, this home is ready to welcome its new owners.












oakheart

Local Authority:

Tenure:
Freehold

Council Tax Band:
C

Energy Efficiency Rating

	Current	Potential
Very energy efficient - lower running costs		
(92 plus) A		
(81-91) B		
(69-80) C		
(55-68) D		
(39-54) E		
(21-38) F		
(1-20) G		
Not energy efficient - higher running costs		
England & Wales		EU Directive 2002/91/EC 

Agents Note: Whilst every care has been taken to prepare these particulars, they are for guidance purposes only. All measurements are approximate and are for general guidance purposes only and whilst every care has been taken to ensure their accuracy, they should not be relied upon.

Oakheart Chelmsford
01245 800181
chelmsford@oakheart.co.uk
20 Victoria Road, Chelmsford, Essex, CM1 1PA

oakheart