

oakheart

£1,800 Per Month

Per Month

Church Road, West Hanningfield

Welcome to this charming detached bungalow located on Church Road in the picturesque village of West Hanningfield. This lovely property boasts a spacious reception room, two cosy bedrooms, and a modern bathroom, offering comfortable living spaces for you and your family.

With a generous 980 square feet of living area, this

bungalow provides ample room for relaxation and entertainment. The detached nature of the property ensures privacy and tranquillity, making it a perfect retreat from the hustle and bustle of everyday life.

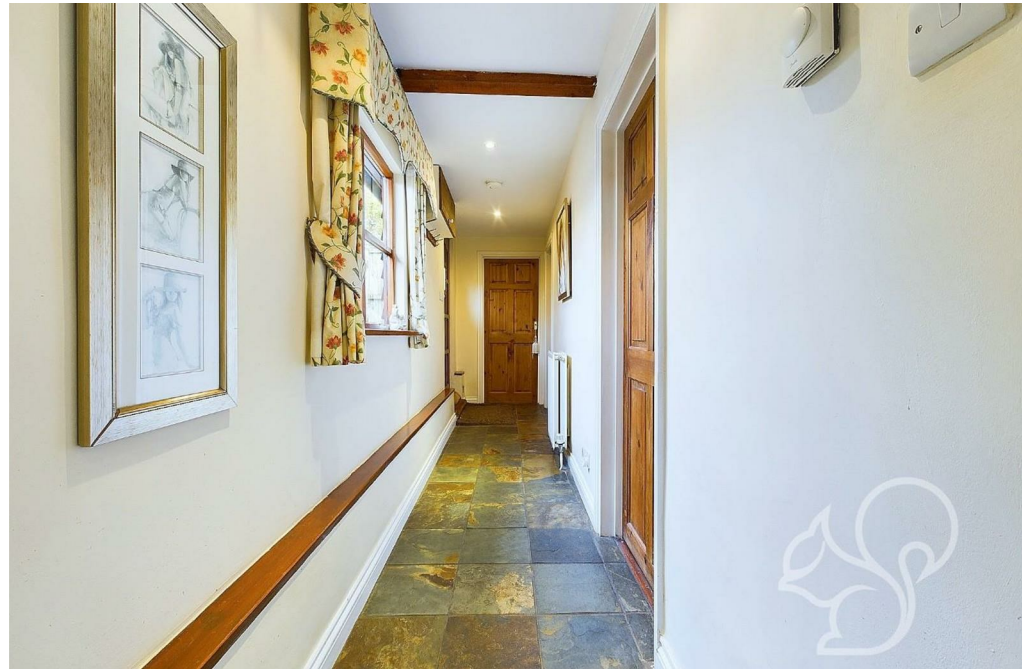
Situated in a desirable location, this bungalow offers a peaceful lifestyle while still being within easy reach of local amenities and transport links. Whether you're looking to

enjoy the beautiful countryside or explore nearby towns, this property provides the ideal base for your adventures.

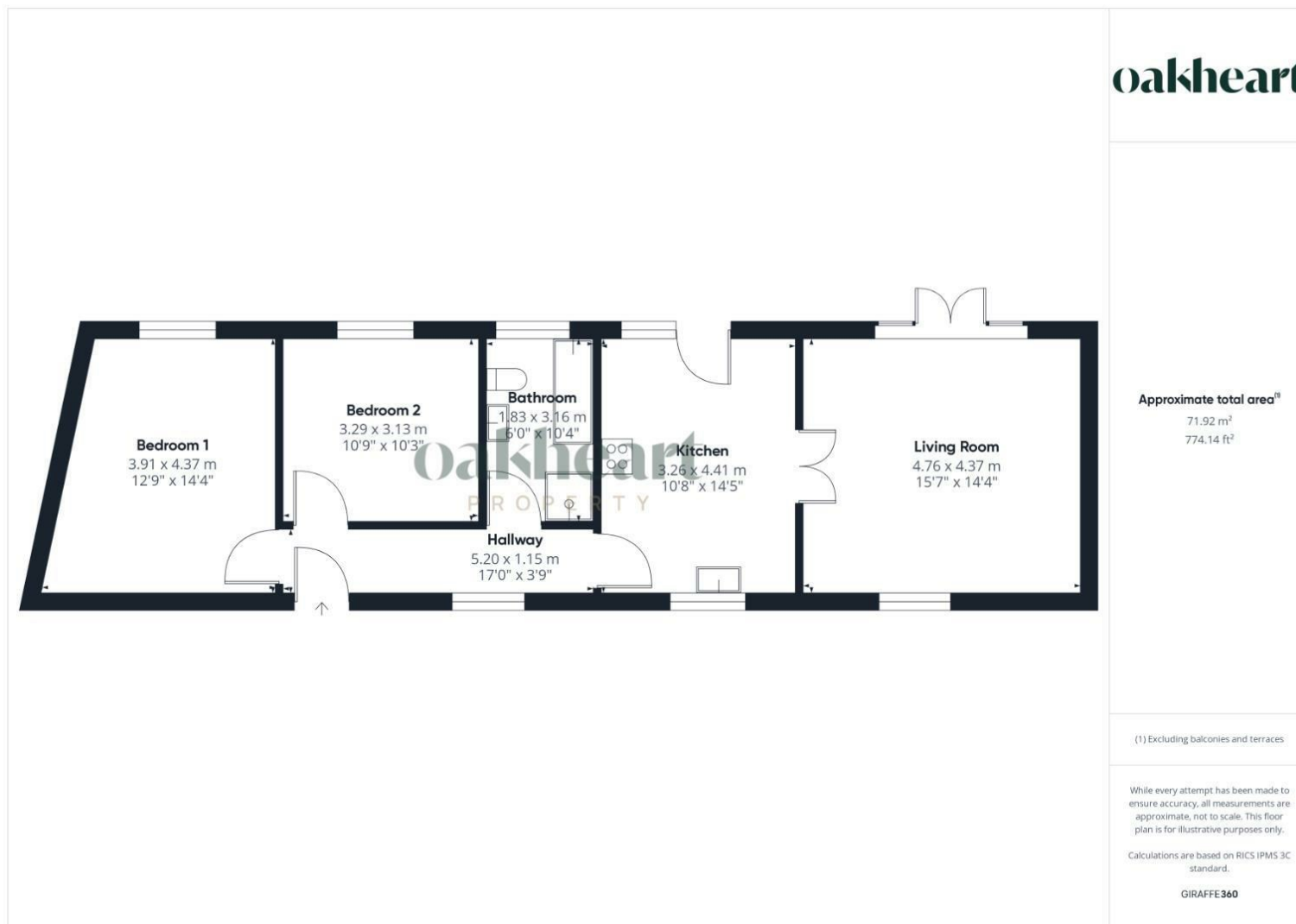
Don't miss the opportunity to make this delightful bungalow your new home. Contact us today to arrange a viewing and experience the charm of Church Road living in West Hanningfield.












Local Authority:
Chelmsford

Tenure:

Council Tax Band:
C

Energy Efficiency Rating

	Current	Potential
Very energy efficient - lower running costs		
(92 plus) A		
(81-91) B		
(69-80) C		77
(55-68) D		
(39-54) E	42	
(21-38) F		
(1-20) G		
Not energy efficient - higher running costs		
England & Wales	EU Directive 2002/91/EC 	

Agents Note: Whilst every care has been taken to prepare these particulars, they are for guidance purposes only. All measurements are approximate and are for general guidance purposes only and whilst every care has been taken to ensure their accuracy, they should not be relied upon.

Oakheart Chelmsford - Lettings

chelmsfordlettings@oakheart.co.uk
20 Victoria Road, Chelmsford, Essex, CM1 1PA

oakheart