

oakheart

£1,900 Per Month

Per Month

Langton Avenue, Chelmsford



This attractive four-bedroom semi-detached home in Chelmsford offers generous living space, excellent convenience, and a welcoming setting ideal for families or professionals. The property features bright and spacious rooms throughout, including four well-proportioned bedrooms and comfortable living areas that create a warm and inviting atmosphere. A modern kitchen and family bathroom complete the interior, making the home both practical and easy to maintain.

Outside, the house benefits from off-street parking for two to three vehicles, providing valuable convenience for multi-car households. To the rear, a large private garden offers plenty of space for children to play, outdoor dining, or simply relaxing in a peaceful setting.

The location is another standout feature. Situated just 1.2 miles from Chelmsford train and bus station, the property offers excellent transport links into London and surrounding areas,

making it perfect for commuters. Local schools, parks, and everyday amenities are all within easy reach, while Chelmsford City Centre is only a short distance away.

This is a spacious and well-located home that combines comfort, practicality, and great connectivity, making it ideal for those looking for quality accommodation in a desirable part of Chelmsford.



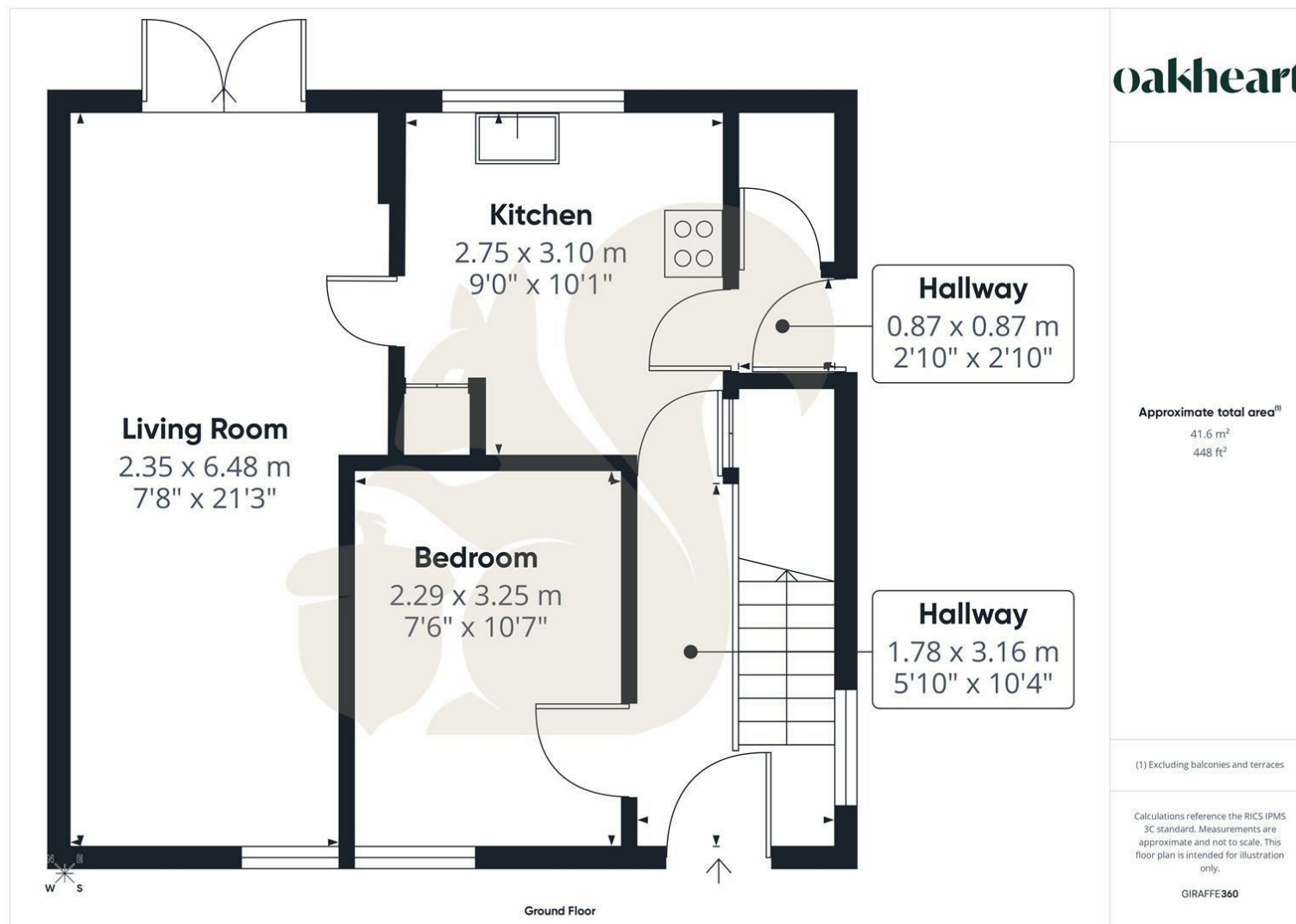













Local Authority:

Tenure:

Council Tax Band:

### Energy Efficiency Rating

	Current	Potential
Very energy efficient - lower running costs		
(92 plus) <b>A</b>		
(81-91) <b>B</b>		
(69-80) <b>C</b>		
(55-68) <b>D</b>	<b>64</b>	
(39-54) <b>E</b>		
(21-38) <b>F</b>		
(1-20) <b>G</b>		
Not energy efficient - higher running costs		
<b>England &amp; Wales</b>	EU Directive 2002/91/EC 	

Agents Note: Whilst every care has been taken to prepare these particulars, they are for guidance purposes only. All measurements are approximate and are for general guidance purposes only and whilst every care has been taken to ensure their accuracy, they should not be relied upon.

Oakheart Chelmsford - Lettings

chelmsfordlettings@oakheart.co.uk  
20 Victoria Road, Chelmsford, Essex, CM1 1PA

**oakheart**