

The logo for 'oakheart' is positioned in the top right corner. It features the word 'oakheart' in a white, lowercase, serif font. The letters are slightly shadowed, giving them a three-dimensional appearance as if they are floating above the background image. The background of the entire image is a photograph of a large, two-story house with a dark tiled roof and light-colored walls. To the left of the house is a detached garage with a similar roof and two large yellow doors. A gravel driveway leads from the foreground towards the house, where a car is parked under a grey cover. The property is surrounded by greenery, including bushes and trees, some of which have autumn-colored leaves. A black metal fence is visible in the lower left foreground.

oakheart

£830,000

Offers In Excess Of
Victoria Road, South Woodham Ferrers

This attractive five-bedroom detached house is set in a quiet cul-de-sac on sought-after Victoria Road. In brief the accommodation offers over 1,700 sqft of spacious living in the heart of South Woodham Ferrers. Located near green spaces and amenities, local schools, sports facilities, and the train station with connections to London, this is an ideal property for growing families or professionals seeking space and convenience.

The ground floor features two inviting reception rooms and a

formal dining room, ideal for family gatherings and entertaining guests. The generous kitchen provides ample worktop space and direct access to the garden, while a useful downstairs cloakroom adds practicality. Upstairs, five well-proportioned bedrooms cater comfortably to family life or those who need home office spaces, with a stylish bathroom serving the household, three of the bedrooms benefitting from built in storage and a ensuite shower to the master bedroom

The home sits on a sizeable plot with a large, private rear garden—just perfect for children, pets, or alfresco dining. A detached double garage offers secure parking or extra storage given the driveway comfortably accommodates multiple cars.

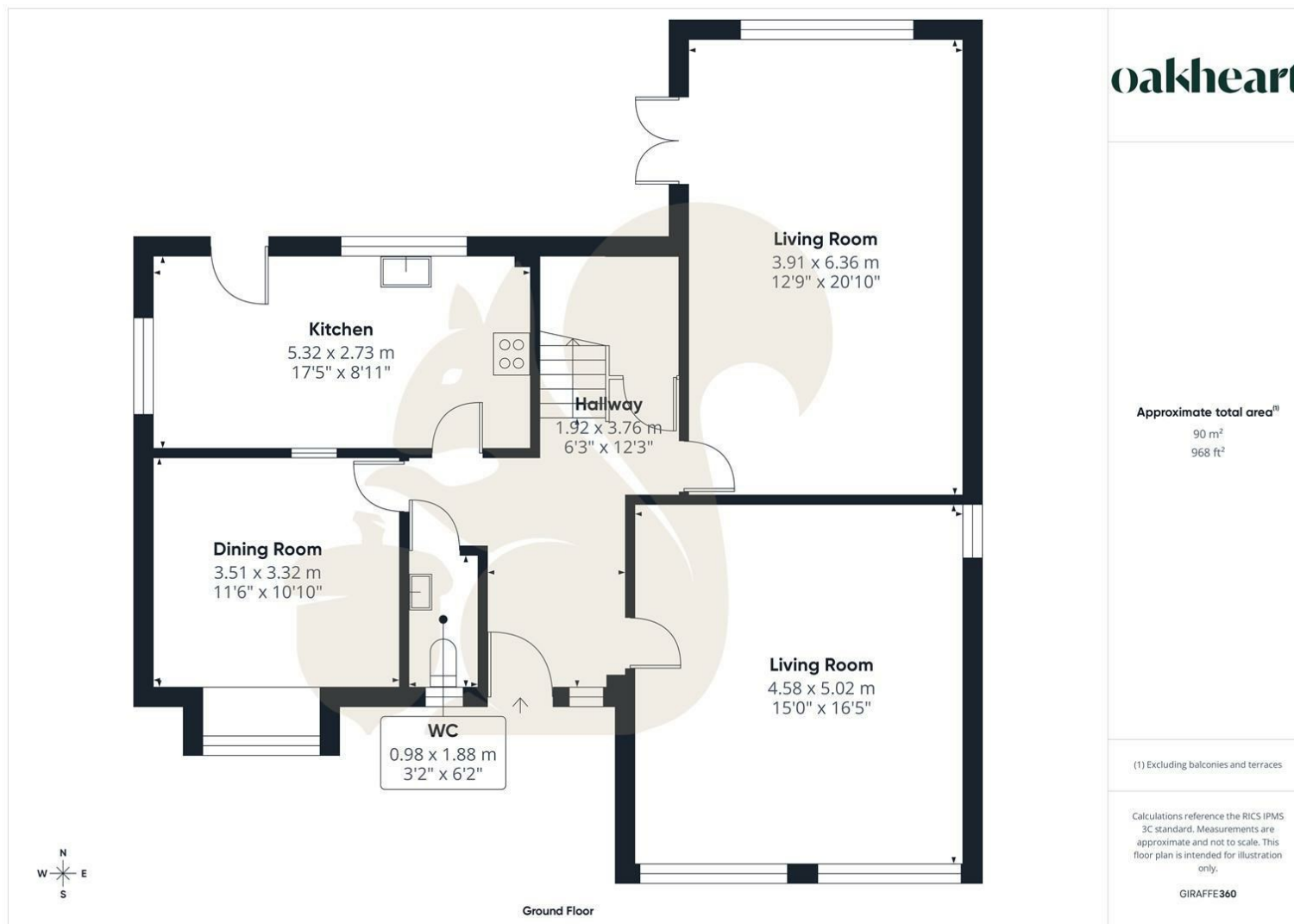
Enjoy the best of South Woodham Ferrers—a safe, welcoming town with varied leisure options, excellent commuter links, and a wonderful sense of community. With the onward chain being complete, this can offer a straightforward move to your new home with anybody looking for a swift transaction.












oakheart

Local Authority:
South Woodham Ferrers parish

Tenure:
Freehold

Council Tax Band:
F

Energy Efficiency Rating

	Current	Potential
Very energy efficient - lower running costs		
(92 plus) A		
(81-91) B		
(69-80) C	72	81
(55-68) D		
(39-54) E		
(21-38) F		
(1-20) G		
Not energy efficient - higher running costs		
England & Wales	EU Directive 2002/91/EC 	

Agents Note: Whilst every care has been taken to prepare these particulars, they are for guidance purposes only. All measurements are approximate and are for general guidance purposes only and whilst every care has been taken to ensure their accuracy, they should not be relied upon.

Oakheart Chelmsford
01245 800181
chelmsford@oakheart.co.uk
20 Victoria Road, Chelmsford, Essex, CM1 1PA

oakheart