

oakheart

£180,000

Guide Price

97 Beaumont Court, Victoria Avenue

Guide Price £180,000 - £190,000.

Welcome to this modern apartment located in the desirable Beaumont Court on Victoria Avenue. This delightful residence, built in 2017, offers a perfect blend of modern and coastal living whilst 55mins from London on the train.

Spanning an impressive 705sqft, this apartment features a well-appointed reception room that provides a warm and inviting space for relaxation and entertainment. The property boasts two generously sized double bedrooms, ensuring ample space for rest

and privacy. The modern bathroom is designed with contemporary fixtures, providing both style and comfort.

The heart of the home is the spacious kitchen, which is equipped with modern appliances and offers a functional layout for cooking enthusiasts. The apartment benefits from gas central heating, ensuring a cosy atmosphere throughout the year.

Beaumont Court residents also enjoy access to a range of excellent amenities, including a communal gymnasium for fitness and a 24-hour concierge service offers security and assistance around the clock,

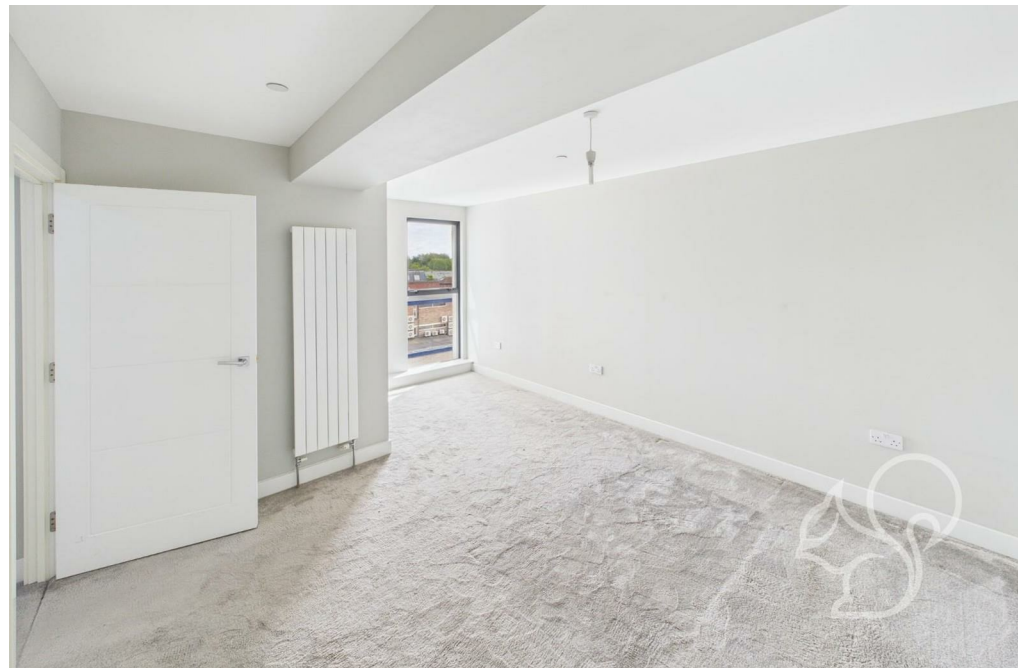
while lifts ensure easy access to all floors and communal areas.

This property is ideal for those seeking a modern lifestyle in a vibrant community, with the added benefit of historical character. Whether you are looking to buy or rent, this apartment presents a wonderful opportunity to enjoy comfortable living in a prime location. Do not miss the chance to make this delightful space your new home.

This property is being sold by modern method of auction.











oakheart

Approximate total area^m
65.5 m²
705 ft²

(1) Excluding balconies and terraces

While every attempt has been made to ensure accuracy, all measurements are approximate, not to scale. This floor plan is for illustrative purposes only.

Calculations were based on RICS IPMS 3C standard. Please note that calculations were adjusted by a third party and therefore may not comply with RICS IPMS 3C.


GIRAFFE360

Local Authority:
Southend-On-Sea City Council

Tenure:
Leasehold

Council Tax Band:
C

Energy Efficiency Rating

	Current	Potential
Very energy efficient - lower running costs		
(92 plus) A		
(81-91) B	81	81
(69-80) C		
(55-68) D		
(39-54) E		
(21-38) F		
(1-20) G		
Not energy efficient - higher running costs		
England & Wales	EU Directive 2002/91/EC 	

Agents Note: Whilst every care has been taken to prepare these particulars, they are for guidance purposes only. All measurements are approximate and are for general guidance purposes only and whilst every care has been taken to ensure their accuracy, they should not be relied upon.

Oakheart Chelmsford
01245 800181
chelmsford@oakheart.co.uk
20 Victoria Road, Chelmsford, Essex, CM1 1PA

oakheart