



5 Bed
House - Terraced
located in

£3,360 Per month



TAYLOR
MICHAEL
STUDENTS

Temple Street, Brighton, BN1 3BH

Approximate Gross Internal Area = 134.3 sq m / 1446 sq ft
(Excluding Roof Terrace & Patio Garden)

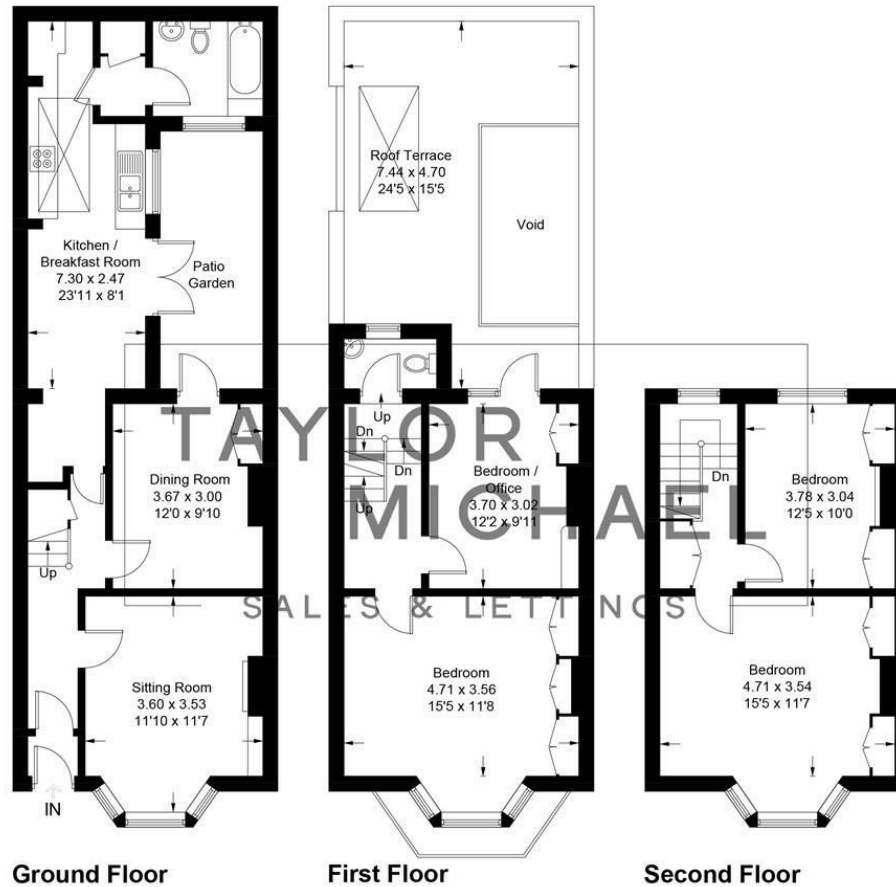


Illustration for identification purposes only, measurements are approximate, not to scale.
Imageplansurveys @ 2025

Energy Efficiency Rating		
	Current	Potential
Very energy efficient - lower running costs		
(92-plus) A		85
(81-91) B		
(69-80) C	70	
(55-68) D		
(39-54) E		
(21-38) F		
(1-20) G		
Not energy efficient - higher running costs		
England & Wales		
EU Directive 2002/91/EC		

DIRECTIONS

CONTACT

62 Church Road
Hove
East Sussex
BN3 2FP

E: lettings@taylormichael.agency
T: <https://taylormichael.agency/>

**TAYLOR
MICHAEL**
STUDENTS