



5 Bed
Apartment - Above
Shop
located in

£3,000



St Georges Road, Brighton, BN2 1EA

Approximate Gross Internal Area = 101.4 sq m / 1091 sq ft

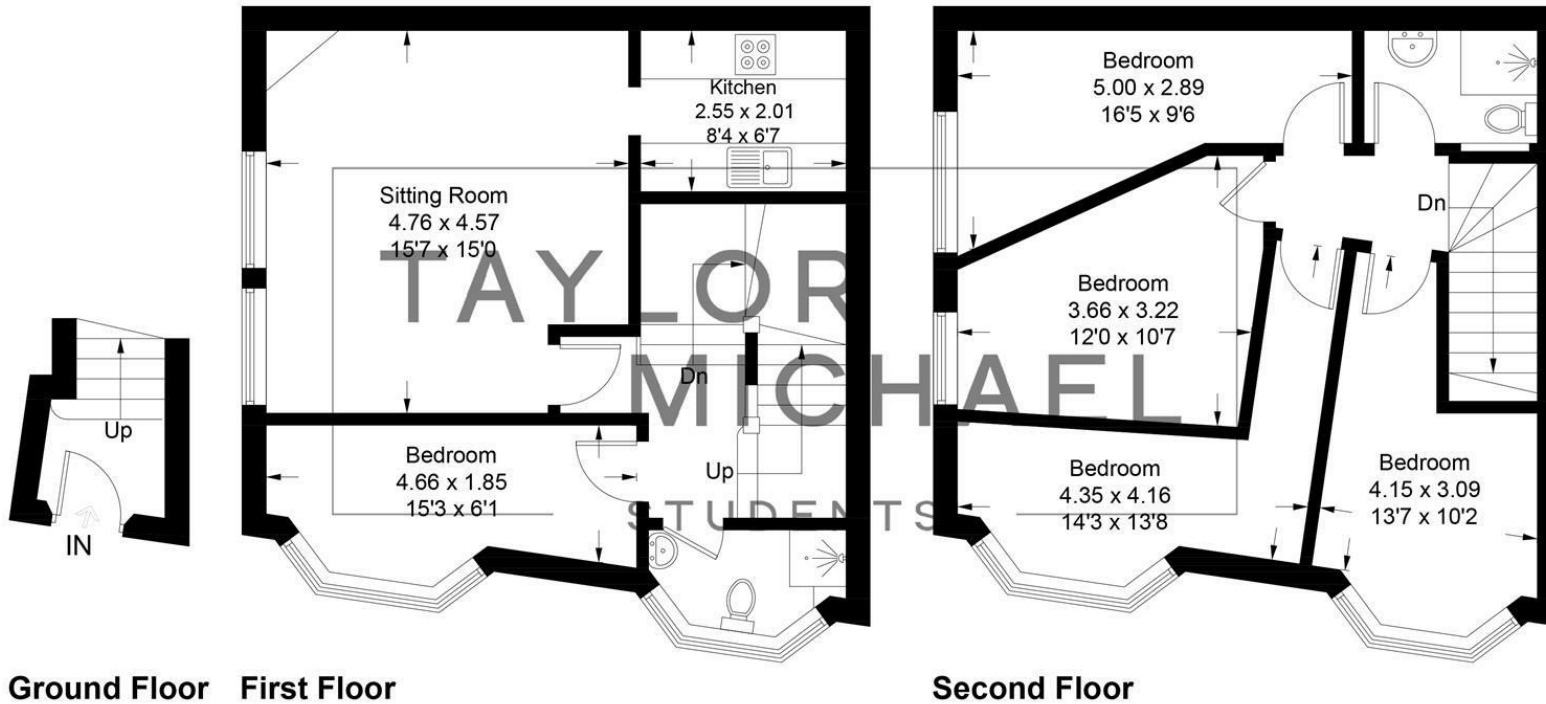
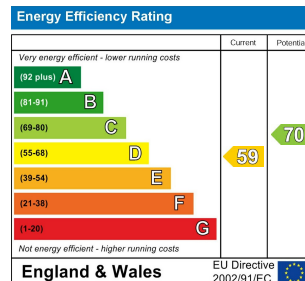


Illustration for identification purposes only, measurements are approximate, not to scale.
Imageplansurveys @ 2025



DIRECTIONS

CONTACT

62 Church Road
Hove
East Sussex
BN3 2FP

E: lettings@taylormichael.agency
T:
<https://taylormichael.agency/>

**TAYLOR
MICHAEL**
STUDENTS