



1 Bedroom Garden
Flat
located on
Vere Road

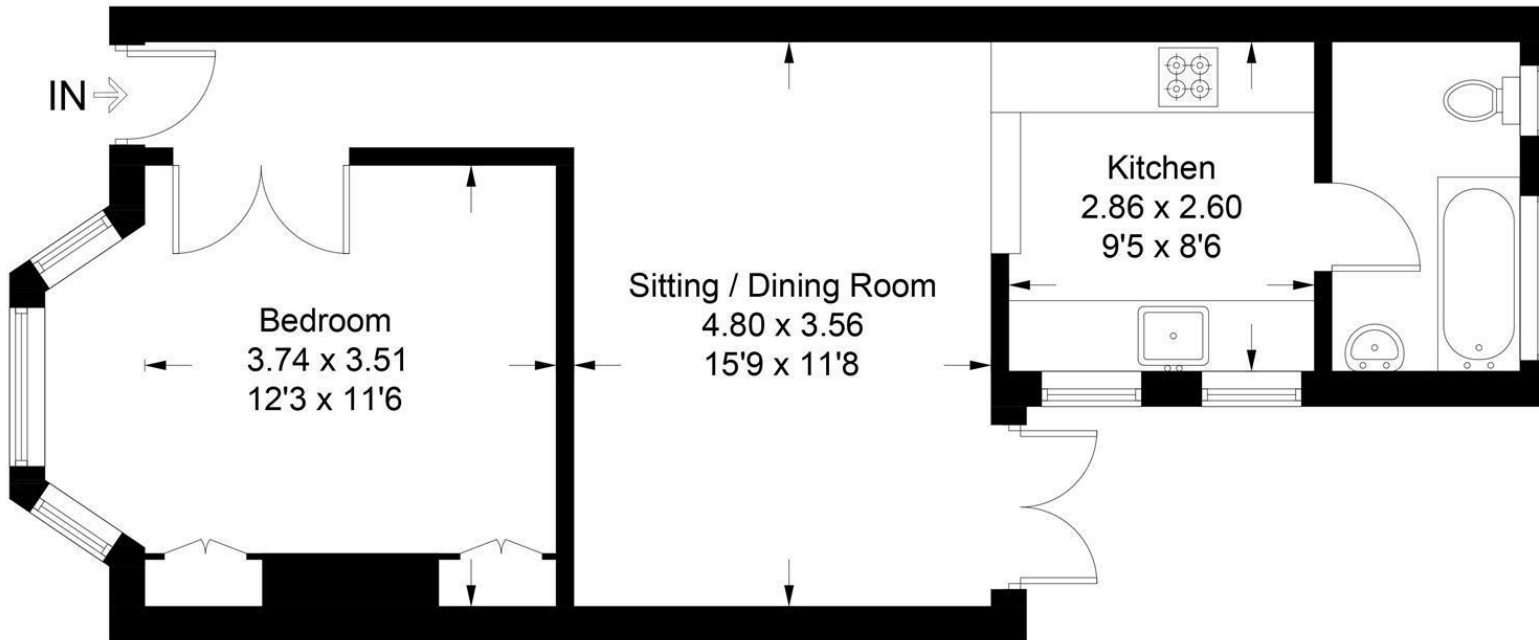
Offers in excess of
£315,000



TAYLOR
MICHAEL

Vere Road, Brighton BN1 4NQ

Approximate Gross Internal Area = 49.3 sq m / 531 sq ft



Lower Ground Floor

Illustration for identification purposes only, measurements are approximate, not to scale.
Imageplansurveys @ 2025

Energy Efficiency Rating		
	Current	Potential
Very energy efficient - lower running costs		
(92 plus) A		
(81-91) B		
(69-80) C		
(55-68) D	66	78
(39-54) E		
(21-38) F		
(1-20) G		
Not energy efficient - higher running costs		
England & Wales		
EU Directive 2002/91/EC		

DIRECTIONS

CONTACT

62 Church Road
Hove
East Sussex
BN3 2FP

E: sales@taylormichael.agency
T: 01273 600100
<https://taylormichael.agency/>

TAYLOR
MICHAEL