



4 Bed
House - Mid
Terrace
located in

£2,995



Buller Road, Brighton BN2 4BJ

Approximate Gross Internal Area = 80.2 sq m / 863 sq ft

External Cupboard = 0.8 sq m / 8 sq ft

Total = 81.0 sq m / 871 sq ft

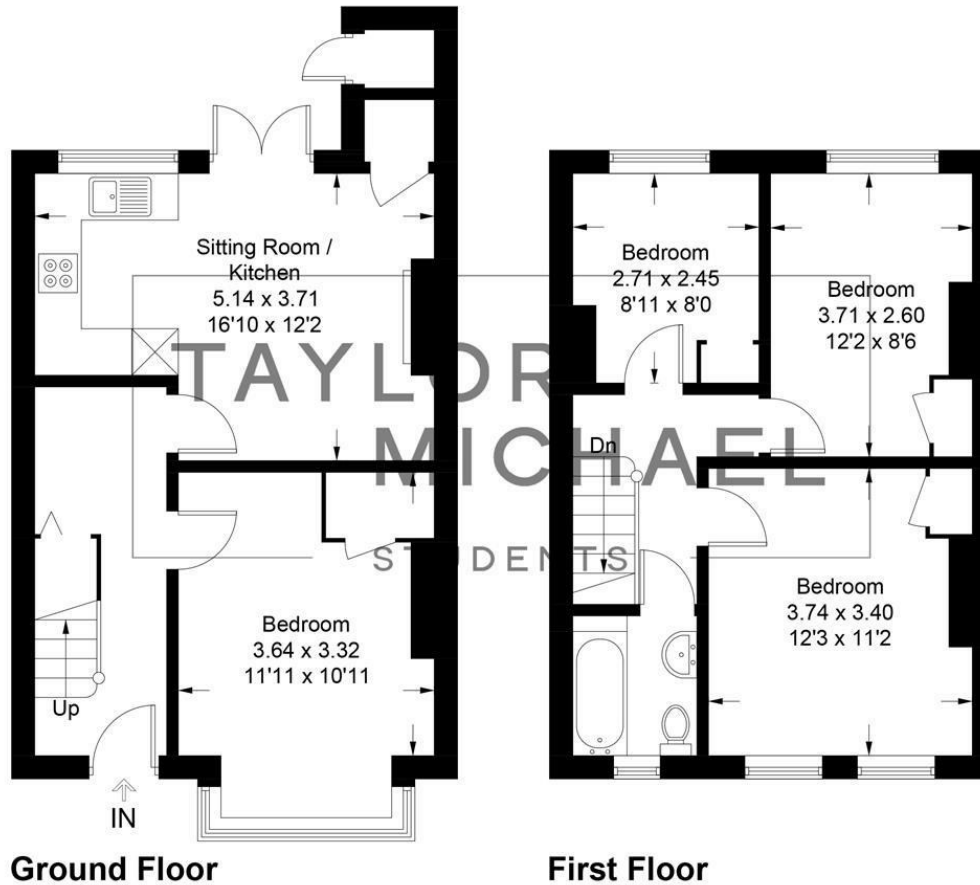


Illustration for identification purposes only, measurements are approximate, not to scale.
Imageplansurveys @ 2025

Energy Efficiency Rating		
	Current	Potential
Very energy efficient - lower running costs		
(92 plus) A		88
(81-91) B		
(69-80) C	70	
(55-68) D		
(39-54) E		
(21-38) F		
(1-20) G		
Not energy efficient - higher running costs		
England & Wales		
EU Directive 2002/91/EC		

DIRECTIONS

CONTACT

62 Church Road
Hove
East Sussex
BN3 2FP

E: lettings@taylormichael.agency
T:
<https://taylormichael.agency/>

**TAYLOR
MICHAEL**
STUDENTS