



## STUNNING, BEAUTIFULLY FURNISHED, ONE BEDROOM PENTHOUSE WITH LARGE TERRACE.

This unique spacious apartment is situated just off Chapel Street, one of Manchester's most up and coming areas, where you'll find an array of bars, restaurants and shops. The University of Salford and Manchester City centre are within easy walking distance as are Salford Central and Salford Crescent railway stations.

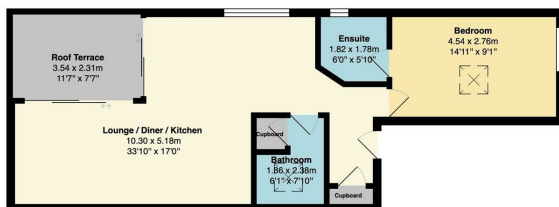
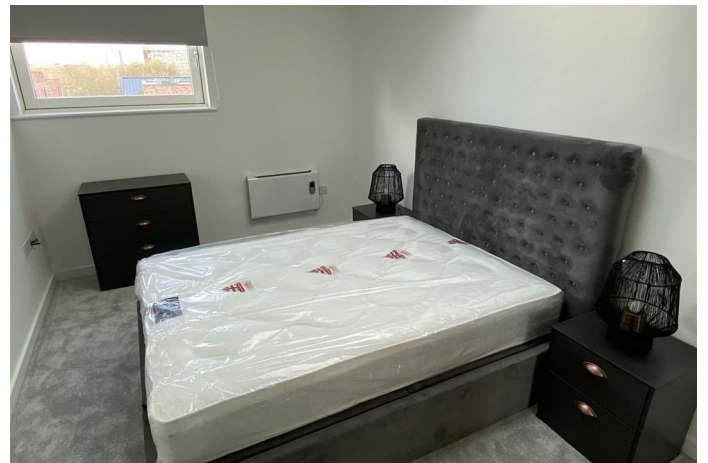
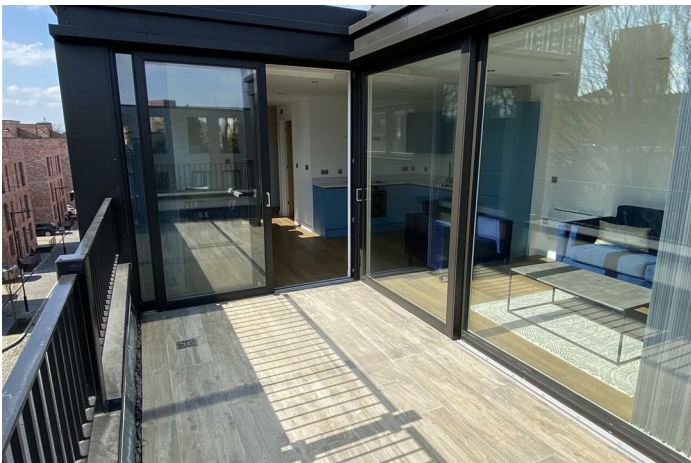
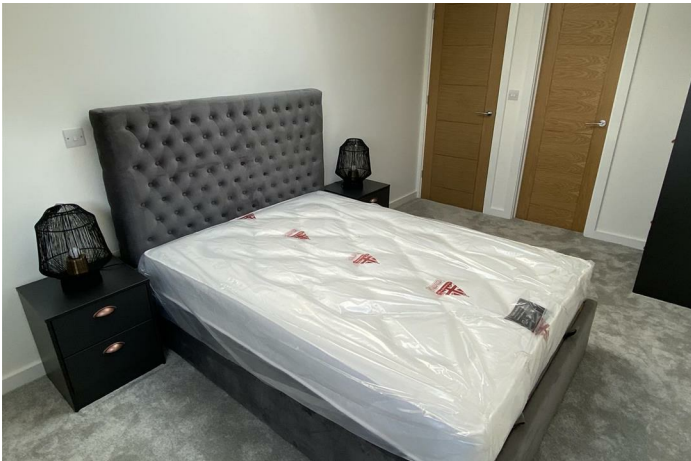
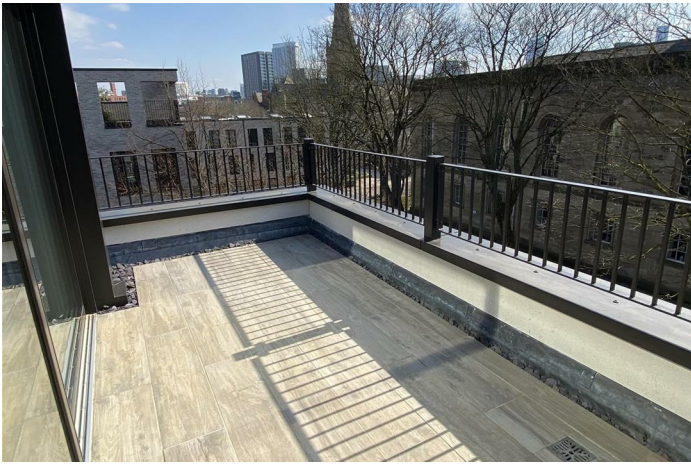
Built in 2022, the apartment is offered fully furnished and provides spacious accommodation with open plan lounge and kitchen with stunning terrace, double bedroom with en-suite, and bathroom. The kitchen is well equipped with integrated appliances including washer dryer, fridge/freezer and dishwasher. The lounge benefits from large floor to ceiling sliding glass doors which open out to the stunning sun terrace. This apartment would make an ideal Monday to Friday pad for executives working in Manchester but living outside of the area.

Right to Rent in the UK checks will be completed via our referencing agency, before a tenancy can be granted. All tenants over the age of 18 must provide original relevant identification documents at the point of submitting an application.

- Maximum number of tenants: 2
- No pets

- 1 bed penthouse
- Large sun terrace
- Beautifully furnished
- Unique development
- Located off Chapel St
- Walking dist to city centre
- Parking permits available from Salford Council
- Ideal Monday to Friday pad
- Close to Salford Uni
- Excellent transport links





**THORPE & Co.**  
ESTATE AGENTS

Telephone: 01617367300 Email: [enquiries@thorpeandcoliving.co.uk](mailto:enquiries@thorpeandcoliving.co.uk)