



THORPE & Co.
ESTATE AGENTS

12 Encombe Place, Salford, M3 6FJ

£1,800 Per month



AVAILABLE June 2025

UTILITY BILLS INCLUDED IN RENT!!!! IDEAL FLAT SHARE!!! Located on a tree lined road in the fashionable Chapel Street area of Salford, this spacious apartment is ideal for students and young professionals. Salford Uni and Manchester city centre are within easy walking distance plus there's an array of trendy bars, restaurants and coffee shops just a stones through away. Transport links couldn't be better with Salford Crescent and Central railway stations just a few hundred meters away. On-street parking is available to residents (permit) and visitors (subject to restrictions).

The apartment itself is offered fully furnished and has been tastefully decorated. Both bedrooms are spacious doubles with en-suites making the property an ideal flat share for young professionals and students. The open plan lounge/kitchen provide ample space for cooking, dining or simply relaxing in front of the TV.

Utilities including timed heating, electricity, water and broadband are included in the rent and a TV is provided for the lounge, tenants pay council tax.

Rent in the UK checks will be completed via our referencing agency, before a tenancy can be granted. All tenants over the age of 18 must provide original relevant identification documents at the point of submitting an application to rent.

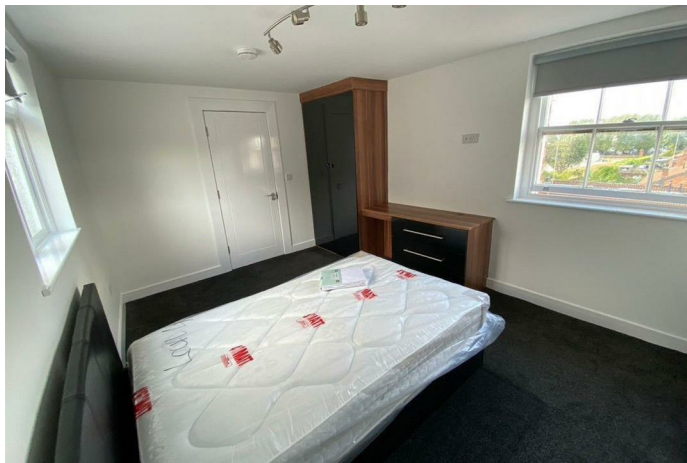
EPC Rating C
Council Tax Band B

- Maximum number of tenants: 2
- No pets

ENQUIRIES SHOULD BE MADE BY EMAIL IN THE FIRST INSTANCE

- Utility bills & Wifi included in rent
- 2 large en-suite bedrooms
- Fully furnished top floor flat
- £1800 PCM
- £2076 DEPOSIT
- Very close to university/Chapel St
- Students welcome
- 10 min walk to city centre
- On-street parking - Permits Salford Council
- Perfect flat share

Telephone: 01617367300 Email: enquiries@thorpeandcoliving.co.uk



THORPE & Co.
ESTATE AGENTS

Telephone: 01617367300 Email: enquiries@thorpeandcoliving.co.uk