

PROPERTY INVESTMENT PROPOSAL

PROPERTY INVESTMENT PRODROMI GARDENS

Property	Type	Beds	Baths	Total Covered Area m ²	Price	VAT
Prodromi Gardens Block D No.10	Townhouse	2	2	89.50	€185,000	no VAT

Polis is one of the most beautiful areas in Cyprus. It is located near Akamas Peninsula, a nature reserve of exceptional natural beauty. The whole of Polis area has been blessed by nature and combines the beauty of mountain and sea. Polis is a perfect retreat for mental and physical relaxation and recreation.





The town of Polis is the perfect location for those seeking the true and traditional Cyprus. A town which appears untouched by time, Polis has a surprisingly modern underlying infrastructure.



Polis square



Polis museum

Polis - Latchi harbour



Polis Municipal beach





Amenities

AMENITIES NEAR PRODRONI GARDENS



Bakery 1km



Supermarket 2.1km



Hospital 3km



Limni Golf Resort 5.7km



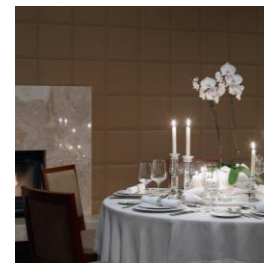
Pharmacy 2km



Petrol Station 2.5km



Latchi Family Resort
2.8km



Restaurants 1.8km



FINE DINING & TRADITIONAL CUISINE

The town of Polis is the perfect location for those seeking the true and traditional Cyprus. A selection of Cypriot taverns and restaurants with international cuisine is only 3 km away from Prodromi Gardens.



BLUE FLAG BEACHES

Within 3.5 km away is the very well-run Municipal Beach, which is among the cleanest beaches in Cyprus and was awarded with the European "Blue Flag".



AKAMAS NATURE TRAILS

9 km away , there are three official nature trails , offer people walking through them stunning views of gorges and valleys.

PRODROMI GARDENS

TOWNHOUSE 10 BLOCK D









ITE PLAN

PRODROMI GARDENS
TOWNHOUSE D10

Bedrooms 2

Covered areas (m²)

Covered area	86.70
Covered verandas	2.80
Total covered area	89.50
Uncovered verandas	14.30

Bathrooms 2

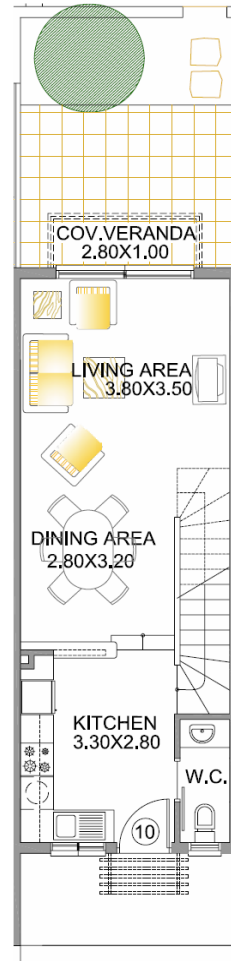
En-suite	2
Guest toilet	1

Garden Yes

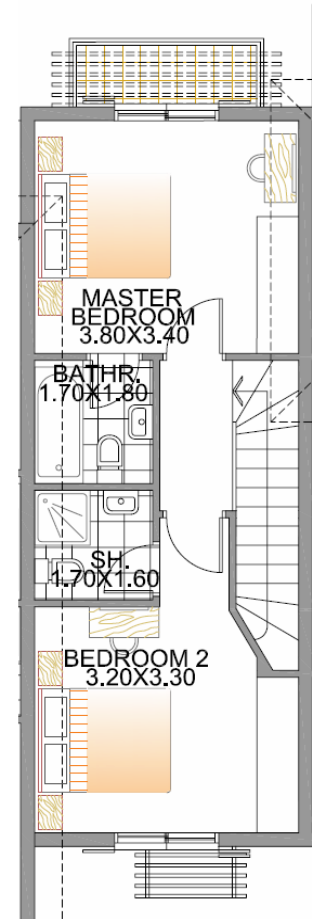
Price: €185,000 no VAT

FLOOR PLANS - TOWNHOUSE D10

GROUND FLOOR



FIRST FLOOR





















PROPERTY INVESTMENT PROPOSAL

The contents and information contained in this presentation are intended for general marketing purposes only and must not be construed as advice, or being complete and accurate nor be relied upon as such. The photographs of the surrounding views and location may have been digitally enhanced or altered and do not represent actual views or surrounding views. These photographs are indicative only. Fittings and finishes are subject to availability and company's discretion. Prospective purchasers should make and must rely on their own enquiries. This presentation is a guide only and does not constitute an offer or contract. Neither the company nor any of its directors or employees give any representation or warranty as to the reliability of the information contained herein, and shall not be responsible and disclaim all loss, liability or expense of any nature whatsoever which may be attributable (directly, indirectly or consequentially) to the use of the information provided.