

Marshall's Green

Marshall Road,
Devizes,
Wiltshire SN10 3HJ
devizes.sales@bovishomes.co.uk
01380 400 020

A342 north to Devizes

- Follow A342 north on Nursteed Road to Devizes
- At the roundabout take the first exit onto Marshall Road
- Development is 100m on the lefthand side

A361 south to Devizes

- Continue south along A361 and cross three roundabouts
- At the fourth roundabout take the first exit
- At the next roundabout take first exit on to A342
- Continue south along the A342 and cross the next roundabout
- At next roundabout take the third exit onto Marshall Road
- Development is 100m on the lefthand side



Marshall's Green Devizes



MIX
Paper from
responsible sources
FSC® C014177

When you have finished with this leaflet please recycle it.

Cover photograph of a view of the banks of The Kennet & Avon Canal at Devizes. Not view from the development. Please check the details of the homes you are interested in with our sales consultant.

Bovis Homes Limited, Vistry Bristol
The Jacobs Building, Berkeley Place, Clifton, Bristol BS8 1EH. T. 01722 638 876
Produced by House Marketing.



bovishomes.co.uk



Welcome to Marshalls Green

This stunning new development of 3, 4 and 5 bedroom homes at Marshalls Green, sits on the edge of the charming, historic market town of Devizes. This fantastic development nestled in the heart of Wiltshire, is the perfect location with a charming market town, a rich history and vibrant community.

The beautiful town of Devizes has nearly 500 listed buildings, notable churches, a town hall and a green in the centre. It boasts a rich and diverse history, with an 11th Century Norman castle, and civil war history at its heart. From the 16th century Devizes became known for its textiles, and by the early 18th century it held the largest corn market in the West Country and a local brewery was set up in the town in 1875.

Not only does the area provide plenty of history, but it offers natural beauty to explore too. Devizes is surrounded by beautiful countryside and boasts picturesque landscapes and historical

landmarks, such as the Devizes White Horse on Roundway Hill and Caen Hill Locks, comprising of 29 locks on the Kennet and Avon Canal. Just a short drive away you can visit the charming Cotswolds, with its chocolate box villages and pretty countryside. Or take a drive to the stunning New Forest National Park where you can explore the idyllic glades, ancient woodlands, open moors and heathland with its unique wildlife.

It's definitely time to visit the new homes at Marshalls Green to see what it has to offer!



Perfectly Positioned

Our new development at Marshalls Green is in the ideal position for all your amenities. Whether you are looking to commute for work, be close to the shops or to ensure you have a good school for your children, you could not find a better location.

The area is close to the town of Swindon, with several good Ofsted rated schools close by.

There are excellent road links to the Cotswolds, Bath, Salisbury, Swindon, Poole and the New Forest National Park. Swindon train station provides easy rail links to London, Bristol, and Cheltenham, making it the ideal location for commuting.

Our beautiful homes allow you to enjoy the rural location, whilst being close enough to access everything you need.

Devizes

1.7 miles | 9 mins drive

9 mins



Lacock Abbey

10.8 mile | 25 mins drive

25 mins



Wadworth Brewery

1.6 miles | 6 mins drive

6 mins



Swindon Railway Station

21.1 miles | 37 mins drive

37 mins



Marshalls Green

Wansdyke School

1.9 miles | 5 mins drive

5 mins



Great Western NHS Hospital

21.9 miles | 39 mins drive

39 mins



The Devizes White Horse

6.9 miles | 19 mins drive

19 mins



Stonehenge

16.8 miles | 30 mins drive

30 mins



Committed to the community

To support the local community, Bovis Homes collaborates with local stakeholders, including the council, to provide investment and support for initiatives in the local area. Bovis Homes has invested over **£8.5 million** in schemes locally to Marshalls Green.

The investments made by Bovis Homes have helped to support sport and leisure, fund public art, provide improvements to waste management and to public transport services, provide resources for libraries, enhance public spaces, provide and improve cycle routes and provide resources for primary schools.

“Bovis Homes has invested more than **£8.5 million** towards community schemes”

These schemes include:

Sports and leisure



Public art



Waste management



Improved public transport services



Libraries



Public open space improvement



Primary schools



Cycle routes



Personalise your new home with upgrades and extras from our **Select** range, where the choice is yours

Customise your kitchen with stylish worktops and the latest modern appliances and personalise your bathrooms with stunning ceramics.

Using the Select range there are various options allowing you to create your perfect property which is truly unique to you.

You can personalise every space in your home from kitchen cupboards and electrics to built in wardrobes and if you have a preference for flooring, you can select from our diverse range that includes luxurious carpets, stylish Karndean, ceramics and vinyl.

Pick up a **Select** brochure sales consultant today to find an extensive list of items available, including:

- Quartz or Granite worktops
- A selection of kitchen packages including integrated appliances
- Flooring
- Built-in wardrobes
- Upgraded tiling and many more!

The choice is yours - with **Select**.



Purchase assistance schemes

Wherever you are in the home-buying market - a first-time buyer, looking to step up the property ladder or a downsizer - we have a variety of great purchase assistance schemes!

Smooth Move

Are you an existing home owner? Our Smooth Move service is designed to help you sell your old property quickly so that you can make the move into a brand new Bovis Home. We'll deal with the estate agents on your behalf, and even pay the estate agents' fees when your house is sold!

Home Exchange

Are you an existing home owner? Our Home Exchange scheme is the simple way to make sure you don't lose out on your brand new Bovis Home - and saves you time and money along the way. We'll buy your property at market value, therefore there are no last minute 'drop-outs', you avoid estate agents fees, and there are no price renegotiations late in the day!

Key Worker

Helping essential key workers get on the housing ladder with assistance from Bovis Homes and access to purchase assistance schemes requiring as little as a 5% deposit.

Own New

We are excited to have partnered with Own New to bring you Rate Reducer, a new scheme designed to help first time buyers and home movers to access a more affordable mortgage by enabling access to a lower rate in the fixed period on your new Bovis home.

A home designed with you in mind

We are constantly reviewing our houses and ensuring they are everything that our customers want in a home. We are proud to have developed and launched a new range of homes.

These homes have been created to embrace modern design and styling, whilst retaining classic architectural traditions. Our new housing collection has introduced bright and airy homes, that have been created using larger and a greater number of windows throughout. This, integrated with the higher ceilings gives your property a spacious feel.

With the kitchen at the heart of the home, impressive family spaces have been included within them to create sociable

living areas. The flow and layout of the new homes has been a key consideration to accommodate today's lifestyles, while attention on master bedrooms and en suites has given the homes added desirability.

Many of the properties include popular bi-fold doors helping to bring the outside in and enhance the gardens as an extended living area.



Firm foundations means peace of mind for you

When buying a new home, you want to be sure you can trust your builder. Choosing a Bovis Home gives you the peace of mind that comes from choosing a company that has been building some of the **best homes in the UK for more than a hundred years.**

We pride ourselves on being one of the country's leading housebuilders and have established an enviable reputation for the quality of our build and design, specification and customer service.

Each Bovis Home is carefully planned both to meet your needs and to integrate into the existing location.

We will often use local materials and reflect regional features. Trees are retained wherever possible and new landscaping added, along with footpaths and cycleways in many cases to help create a wonderful place to live.

Marshalls Green

Devizes



This plan has been produced for home identification purposes only and is not to scale. The development layout, landscaping and tenure of all dwellings may be subject to change throughout the course of the development. Finishes and materials may vary from those shown on the plan. Please check the details of your chosen plot and house type with the sales consultant. Development layout plan correct at time of production.



The Beech

3 bedroom home

bovishomes.co.uk

**Bovis
Homes** 

The Beech

3 bedroom home

Plots 10[†], 11, 12, 20, 21[†], 46[†], 47, 50[†], 51, 146, 147, 148[†]

Ground floor

	metres	feet / inches
Kitchen / Dining Area	4.74 x 3.66	15' 7" x 12' 0"
Sitting Room	3.72 x 4.32	12' 2" x 14' 2"

First floor

	metres	feet / inches
Bedroom 2	4.05 x 2.68	13' 3" x 8' 10"
Bedroom 3	2.50 x 3.38	8' 2" x 11' 1"

Second floor

	metres	feet / inches
Bedroom 1	3.63 x 3.66	11' 11" x 12' 0"

The Beech

The floorplan has been produced for illustrative purposes only. Room sizes shown are between arrow points as indicated on plan. The dimensions have tolerances of + or -50mm and should not be used other than for general guidance. If specific dimensions are required, enquiries should be made to the sales consultant. The floor plans shown are not to scale. Measurements are based on the original drawings. Slight variations may occur during construction.

[†] This is a handed plot (reflected as viewed here)

* Full ceiling height

** Reduced ceiling height - 2.1m

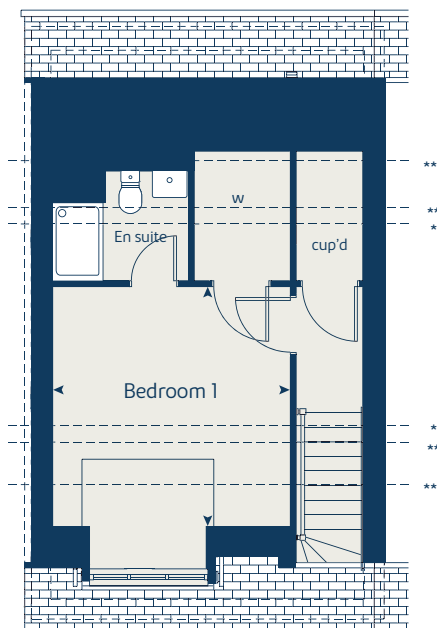
*** Reduced ceiling height - 1.5m

ovn	oven	ffz	fridge freezer
h	hob	ffzs	fridge freezer space
ds	dishwasher space	tds	tumble dryer space
ws	washing machine space	cup'd	cupboard
ldr	larder	w	wardrobe
f	fridge	◀ ▶	measuring points
fzr	freezer		

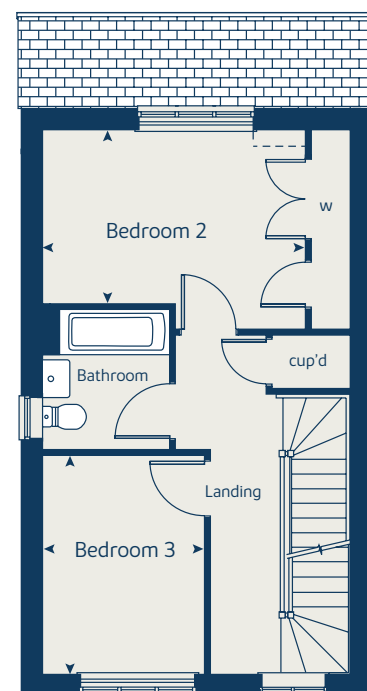
The illustrations shown are computer generated impressions of how the property may look and are indicative only. External details or finishes may vary on individual plots and homes may be built in either detached or attached styles depending on the development layout. Exact specifications, window styles and whether a property is left or righthanded may differ from plot to plot. Please speak to our sales consultant for specific plot details.



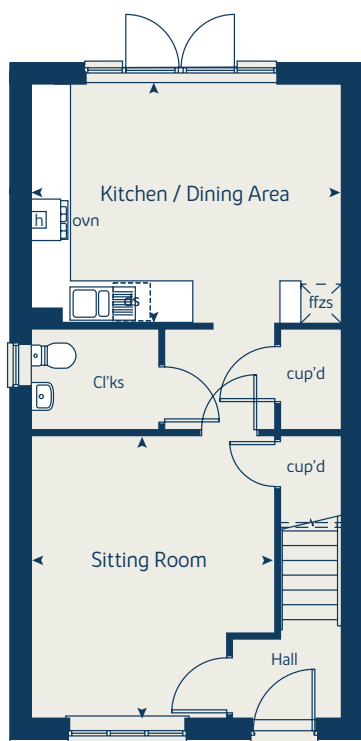
Second floor



First floor



Ground floor





The Cypress

3 bedroom home

bovishomes.co.uk

**Bovis
Homes** 

The Cypress

3 bedroom home

Plots 7, 15, 28, 74†, 99, 115, 137†

Ground floor	metres	feet / inches
Kitchen / Dining Area	5.53 x 3.16	18' 2" x 10' 4"
Sitting Room	3.34 x 3.95	10' 11" x 13' 0"

First floor	metres	feet / inches
Bedroom 1	3.29 x 3.71	10' 10" x 12' 2"
Bedroom 2	3.03 x 3.57	9' 11" x 11' 9"
Bedroom 3	2.41 x 3.75	7' 11" x 12' 4"

The Cypress

The floorplan has been produced for illustrative purposes only. Room sizes shown are between arrow points as indicated on plan. The dimensions have tolerances of + or -50mm and should not be used other than for general guidance. If specific dimensions are required, enquiries should be made to the sales consultant. The floor plans shown are not to scale. Measurements are based on the original drawings. Slight variations may occur during construction.

† This is a handed plot (reflected as viewed here)

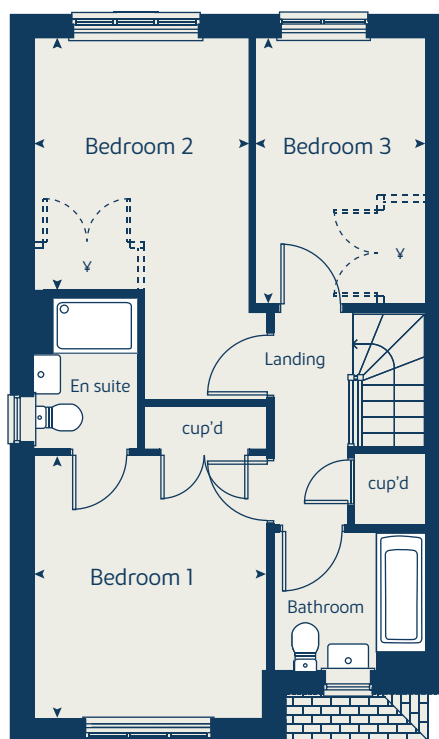
✓ Optional fitted wardrobe for optional customer upgrade

ovn	oven	ffz	fridge freezer
h	hob	ffzs	fridge freezer space
ds	dishwasher space	tds	tumble dryer space
ws	washing machine space	cup'd	cupboard
ldr	larder	w	wardrobe
f	fridge	◀ ▶	measuring points
fzr	freezer		

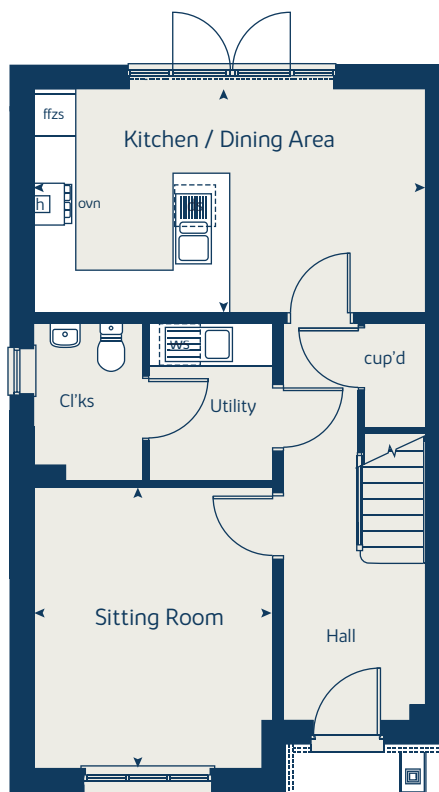
The illustrations shown are computer generated impressions of how the property may look and are indicative only. External details or finishes may vary on individual plots and homes may be built in either detached or attached styles depending on the development layout. Exact specifications, window styles and whether a property is left or righthanded may differ from plot to plot. Please speak to our sales consultant for specific plot details.



First floor



Ground floor





The Rowan

3 bedroom home

bovishomes.co.uk

**Bovis
Homes** 

The Rowan

3 bedroom home

Plots 29, 31†, 35, 36†, 40, 149, 150†, 154, 155†

Ground floor	metres	feet / inches
Kitchen	2.53 x 3.44	8' 4" x 11' 3"
Living / Dining Area	5.26 x 4.90	17' 3" x 16' 1"

First floor	metres	feet / inches
Bedroom 1	3.41 x 3.58	11' 2" x 11' 9"
Bedroom 2	3.02 x 2.44	9' 11" x 8' 0"
Bedroom 3	2.15 x 3.49	7' 1" x 11' 5"

The Rowan

The floorplan has been produced for illustrative purposes only. Room sizes shown are between arrow points as indicated on plan. The dimensions have tolerances of + or -50mm and should not be used other than for general guidance. If specific dimensions are required, enquiries should be made to the sales consultant. The floor plans shown are not to scale. Measurements are based on the original drawings. Slight variations may occur during construction..

† This is a handed plot (reflected as viewed here)

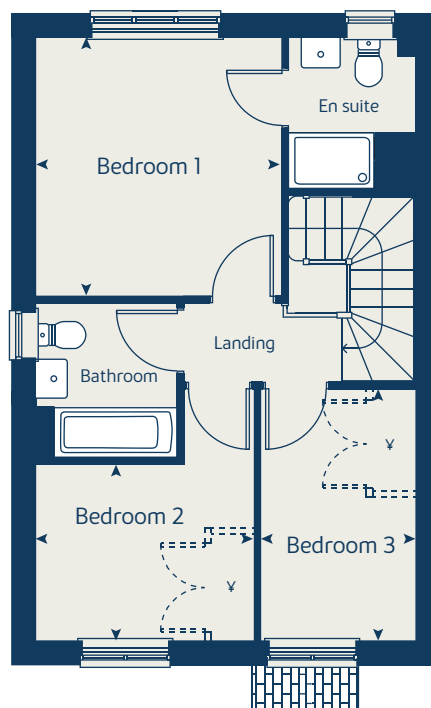
∨ Optional fitted wardrobe for optional customer upgrade

ovn	oven	ffz	fridge freezer
h	hob	ffzs	fridge freezer space
ds	dishwasher space	tds	tumble dryer space
ws	washing machine space	cup'd	cupboard
ldr	larder	w	wardrobe
f	fridge	◀ ▶	measuring points
fzr	freezer		

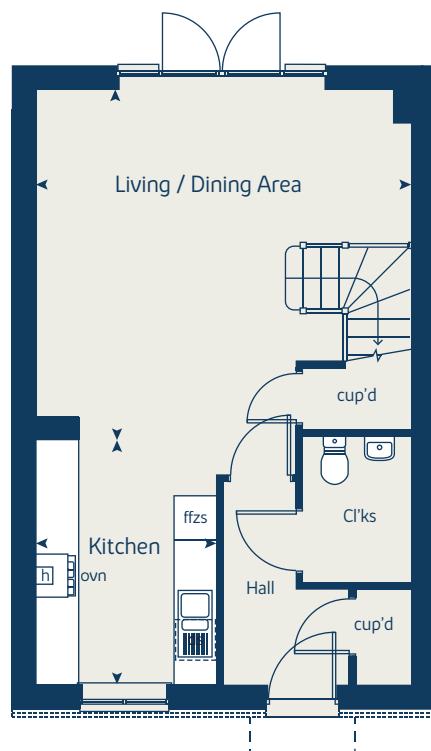
The illustrations shown are computer generated impressions of how the property may look and are indicative only. External details or finishes may vary on individual plots and homes may be built in either detached or attached styles depending on the development layout. Exact specifications, window styles and whether a property is left or righthanded may differ from plot to plot. Please speak to our sales consultant for specific plot details.



First floor



Ground floor





The Magnolia

3 bedroom home

bovishomes.co.uk

**Bovis
Homes** 

The Magnolia

3 bedroom home

Plots 17[†], 18, 30[†], 37, 38[†], 39[†], 41[†], 42[†], 77, 78[†], 117[†], 118, 151, 152[†], 153[†]

Ground floor	metres	feet / inches
Kitchen / Dining Area	4.74 x 3.26	15' 7" x 10' 8"
Sitting Room	3.73 x 3.66	12' 3" x 12' 0"

First floor	metres	feet / inches
Bedroom 1	2.59 x 3.11	8' 6" x 10' 2"
Bedroom 2	2.59 x 2.94	8' 6" x 9' 8"
Bedroom 3	2.06 x 2.85	6' 9" x 9' 4"

The Magnolia

The floorplan has been produced for illustrative purposes only. Room sizes shown are between arrow points as indicated on plan. The dimensions have tolerances of + or -50mm and should not be used other than for general guidance. If specific dimensions are required, enquiries should be made to the sales consultant. The floor plans shown are not to scale. Measurements are based on the original drawings. Slight variations may occur during construction..

[†] This is a handed plot (reflected as viewed here)

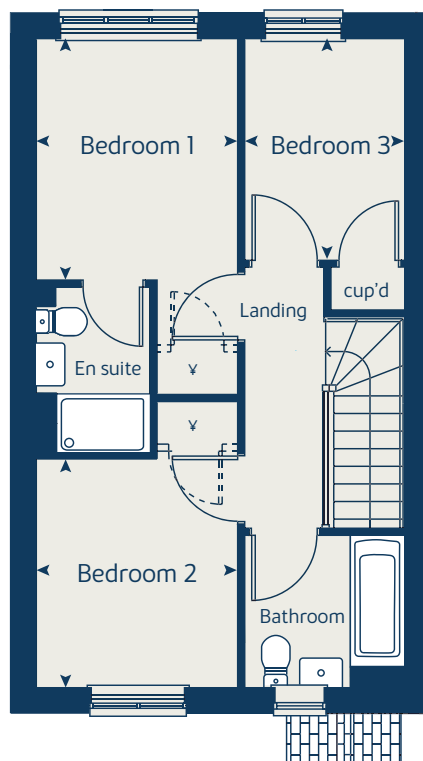
∨ Optional fitted wardrobe for optional customer upgrade

ovn	oven	ffz	fridge freezer
h	hob	ffzs	fridge freezer space
ds	dishwasher space	tds	tumble dryer space
ws	washing machine space	cup'd	cupboard
ldr	larder	w	wardrobe
f	fridge	◀ ▶	measuring points
fzr	freezer		

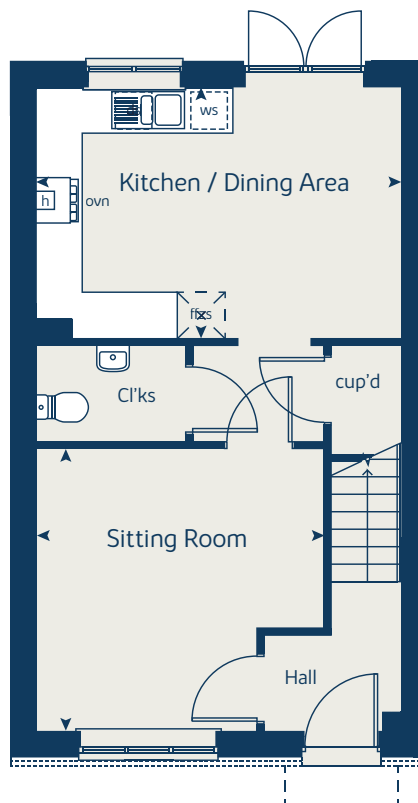
The illustrations shown are computer generated impressions of how the property may look and are indicative only. External details or finishes may vary on individual plots and homes may be built in either detached or attached styles depending on the development layout. Exact specifications, window styles and whether a property is left or righthanded may differ from plot to plot. Please speak to our sales consultant for specific plot details.



First floor



Ground floor





The Spruce

3 bedroom home

bovishomes.co.uk

**Bovis
Homes** 

The Spruce

3 bedroom home

Plots 19†, 59†, 97†, 101, 105†, 112†

Ground floor	metres	feet / inches
Kitchen	3.23 x 2.01	10' 6" x 6' 7"
Dining Area	3.63 x 3.51	11' 11" x 11' 6"
Sitting Room	3.45 x 5.53	11' 4" x 18' 2"

First floor	metres	feet / inches
Bedroom 1	3.50 x 3.29	11' 6" x 10' 10"
Bedroom 2	3.60 x 3.29	11' 10" x 10' 10"
Bedroom 3	3.60 x 2.15	11' 10" x 7' 1"

The Spruce

The floorplan has been produced for illustrative purposes only. Room sizes shown are between arrow points as indicated on plan. The dimensions have tolerances of + or -50mm and should not be used other than for general guidance. If specific dimensions are required, enquiries should be made to the sales consultant. The floor plans shown are not to scale. Measurements are based on the original drawings. Slight variations may occur during construction.

† This is a handed plot (reflected as viewed here)

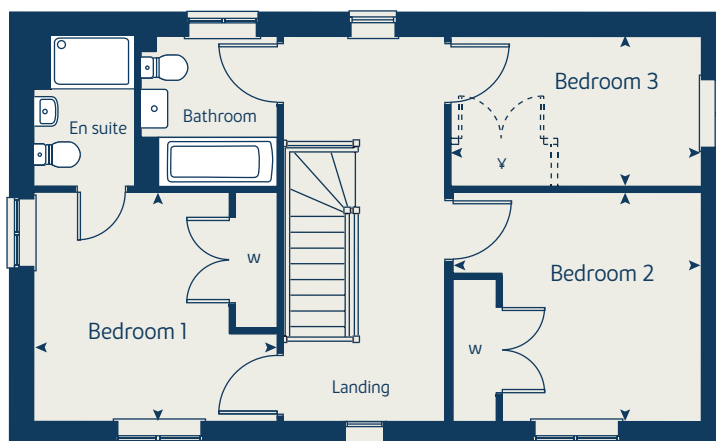
✓ Optional fitted wardrobe for optional customer upgrade

ovn	oven	ffz	fridge freezer
h	hob	ffzs	fridge freezer space
ds	dishwasher space	tds	tumble dryer space
ws	washing machine space	cup'd	cupboard
ldr	larder	w	wardrobe
f	fridge	◀ ▶	measuring points
fzr	freezer		

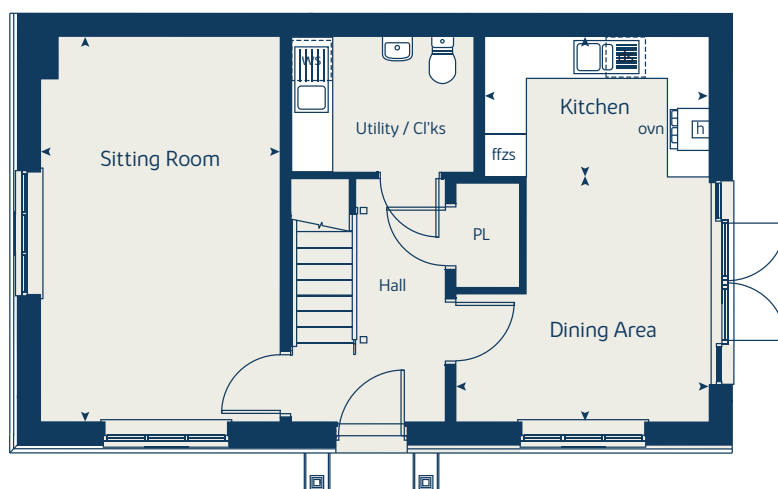
The illustrations shown are computer generated impressions of how the property may look and are indicative only. External details or finishes may vary on individual plots and homes may be built in either detached or attached styles depending on the development layout. Exact specifications, window styles and whether a property is left or righthanded may differ from plot to plot. Please speak to our sales consultant for specific plot details.



First floor



Ground floor





The Spruce II

3 bedroom home

bovishomes.co.uk

**Bovis
Homes** 

The Spruce II

3 bedroom home

Plots 48, 49†, 71†, 79

Ground floor	metres	feet / inches
Kitchen	3.23 x 2.01	10' 7" x 6' 7"
Dining Area	3.63 x 3.51	11' 11" x 11' 6"
Sitting Room	3.45 x 5.53	11' 4" x 18' 2"

First floor	metres	feet / inches
Bedroom 1	3.50 x 3.29	11' 6" x 10' 10"
Bedroom 2	3.60 x 3.29	11' 10" x 10' 10"
Bedroom 3	3.60 x 2.15	11' 10" x 7' 1"

The Spruce

The floorplan has been produced for illustrative purposes only. Room sizes shown are between arrow points as indicated on plan. The dimensions have tolerances of + or -50mm and should not be used other than for general guidance. If specific dimensions are required, enquiries should be made to the sales consultant. The floor plans shown are not to scale. Measurements are based on the original drawings. Slight variations may occur during construction.

† This is a handed plot (reflected as viewed here)

✕ Optional fitted wardrobe for optional customer upgrade

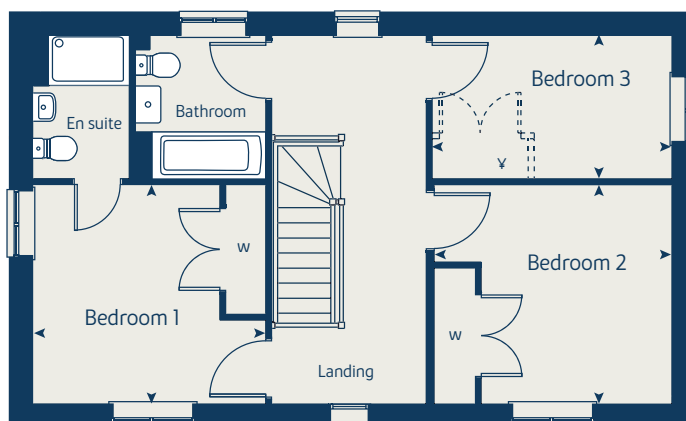
* Gable window applies to plot 71 only

ovn	oven	ffz	fridge freezer
h	hob	ffzs	fridge freezer space
ds	dishwasher space	tds	tumble dryer space
ws	washing machine space	cup'd	cupboard
ldr	larder	w	wardrobe
f	fridge	◀ ▶	measuring points
fzr	freezer		

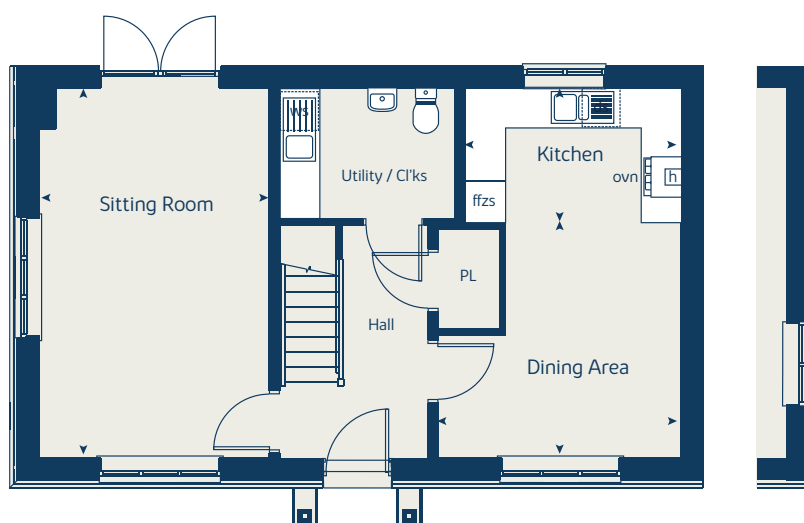
The illustrations shown are computer generated impressions of how the property may look and are indicative only. External details or finishes may vary on individual plots and homes may be built in either detached or attached styles depending on the development layout. Exact specifications, window styles and whether a property is left or righthanded may differ from plot to plot. Please speak to our sales consultant for specific plot details.



First floor



Ground floor





The Alder

4 bedroom home

bovishomes.co.uk

**Bovis
Homes** 

The Alder

4 bedroom home

Plots 1, 5, 23, 24†, 26, 27†, 100†, 108, 116, 138†, 142†, 143†, 144, 163

Ground floor	metres	feet / inches
Kitchen	3.60 x 3.27	11' 10" x 10' 9"
Dining Area	5.17 x 3.27	17' 0" x 10' 9"
Sitting Room	3.34 x 4.13	10' 11" x 13' 7"
Garage	2.90 x 5.86	9' 6" x 19' 3"

First floor	metres	feet / inches
Bedroom 1	3.34 x 3.69	10' 11" x 12' 1"
Bedroom 2	3.01 x 3.62	9' 11" x 11' 11"
Bedroom 3	3.01 x 3.89	9' 11" x 12' 9"
Bedroom 4	3.31 x 3.50	10' 10" x 11' 6"

The Alder
 The floorplan has been produced for illustrative purposes only. Room sizes shown are between arrow points as indicated on plan. The dimensions have tolerances of + or -50mm and should not be used other than for general guidance. If specific dimensions are required, enquiries should be made to the sales consultant. The floor plans shown are not to scale. Measurements are based on the original drawings. Slight variations may occur during construction..

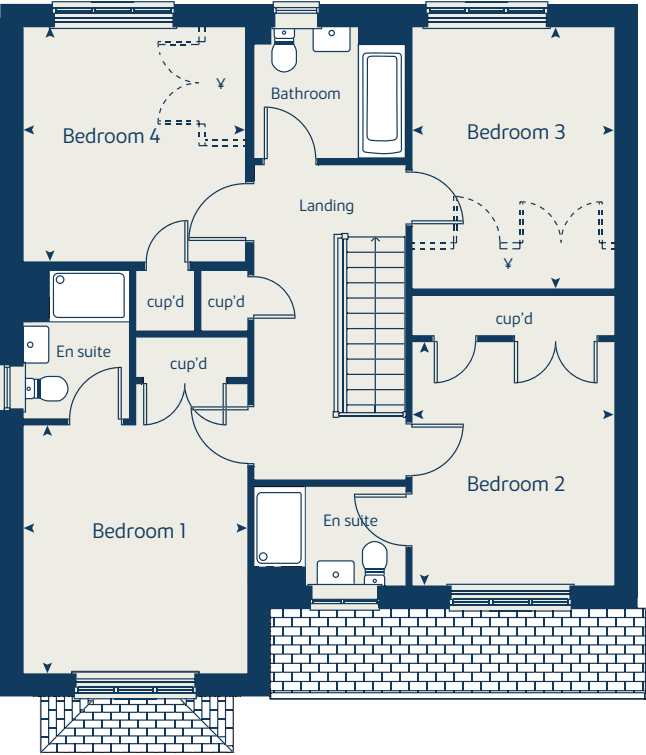
- † This is a handed plot (reflected as viewed here)
- ✓ Optional fitted wardrobe for optional customer upgrade

ovn	oven	ffz	fridge freezer
h	hob	ffzs	fridge freezer space
ds	dishwasher space	tds	tumble dryer space
ws	washing machine space	cup'd	cupboard
ldr	larder	w	wardrobe
f	fridge	◀ ▶	measuring points
fzr	freezer		

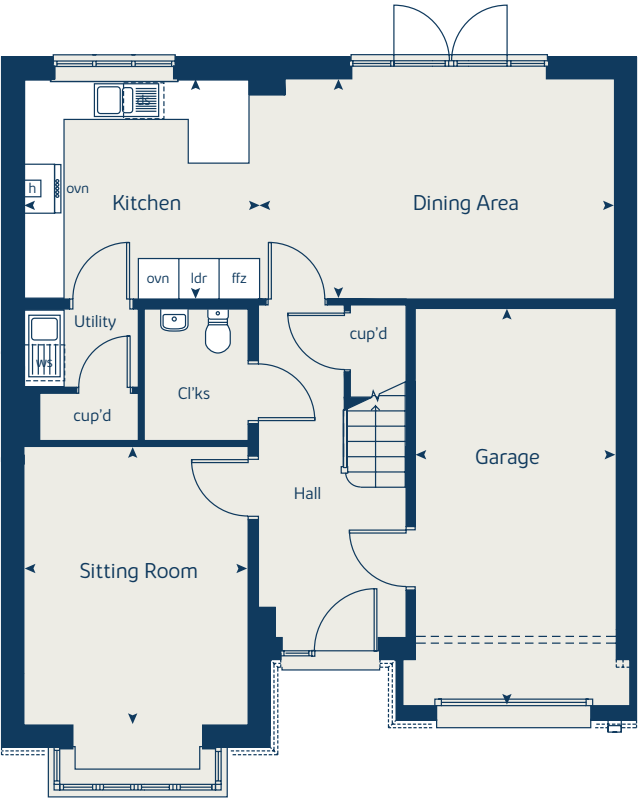
The illustrations shown are computer generated impressions of how the property may look and are indicative only. External details or finishes may vary on individual plots and homes may be built in either detached or attached styles depending on the development layout. Exact specifications, window styles and whether a property is left or righthanded may differ from plot to plot. Please speak to our sales consultant for specific plot details.



First floor



Ground floor





The Aspen

4 bedroom home

bovishomes.co.uk

**Bovis
Homes** 

The Aspen

4 bedroom home

Plots 4[†], 43, 44, 53, 85, 106[†], 109, 133, 134[†]

Ground floor	metres	feet / inches
Kitchen / Dining Area	7.78 x 3.23	25' 6" x 10' 7"
Sitting Room	3.39 x 5.21	11' 1" x 17' 1"
Study	2.02 x 1.50	6' 8" x 4' 11"

First floor	metres	feet / inches
Bedroom 1	3.44 x 4.59	11' 3" x 15' 1"
Bedroom 2	3.15 x 3.07	10' 4" x 10' 1"
Bedroom 3	4.16 x 2.36	13' 8" x 7' 9"
Bedroom 4	3.53 x 2.39	11' 7" x 7' 10"

The Aspen
 The floorplan has been produced for illustrative purposes only. Room sizes shown are between arrow points as indicated on plan. The dimensions have tolerances of + or -50mm and should not be used other than for general guidance. If specific dimensions are required, enquiries should be made to the sales consultant. The floor plans shown are not to scale. Measurements are based on the original drawings. Slight variations may occur during construction.

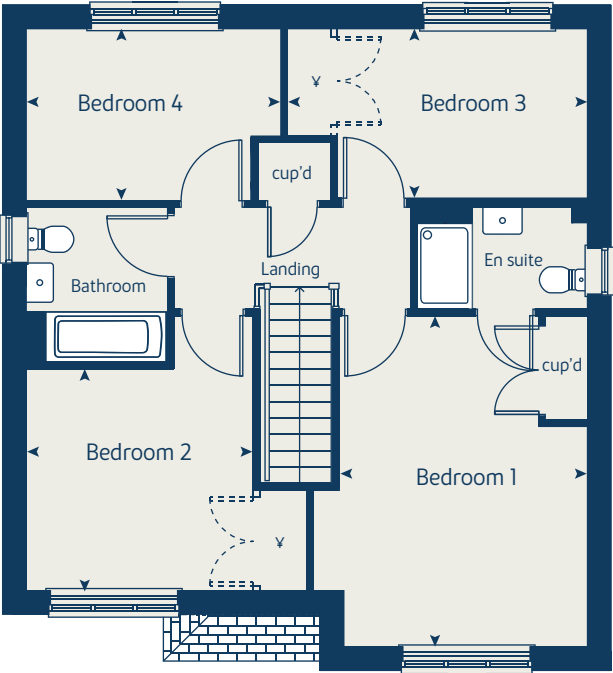
[†] This is a handed plot (reflected as viewed here)
 * Alternative window applies to Plots 9, 155, 160, 164 & 166
 ** Alternative entrance applies to Plots 9, 155, 160, 164 & 166
 *** Alternative roofing layout applies to Plots 9, 155, 160, 164 & 166
 ♣ Optional fitted wardrobe for optional customer upgrade

ovn	oven	ffz	fridge freezer
h	hob	ffzs	fridge freezer space
ds	dishwasher space	tds	tumble dryer space
ws	washing machine space	cup'd	cupboard
ldr	larder	w	wardrobe
f	fridge	◀ ▶	measuring points
fzr	freezer		

The illustrations shown are computer generated impressions of how the property may look and are indicative only. External details or finishes may vary on individual plots and homes may be built in either detached or attached styles depending on the development layout. Exact specifications, window styles and whether a property is left or righthanded may differ from plot to plot. Please speak to our sales consultant for specific plot details.



First floor



Ground floor





The Maple

4 bedroom home

bovishomes.co.uk

**Bovis
Homes** 

The Maple

4 bedroom home

Plots 25, 140

Ground floor	metres	feet / inches
Kitchen	3.61 x 3.75	11' 10" x 12' 4"
Dining Area	7.14 x 2.95	23' 5" x 9' 8"
Sitting Room	3.62 x 4.53	11' 11" x 14' 10"
Study	2.39 x 2.13	7' 10" x 7' 0"

First floor	metres	feet / inches
Bedroom 1	3.61 x 3.57	11' 10" x 11' 9"
Bedroom 2	3.61 x 3.60	11' 10" x 11' 10"
Bedroom 3	2.80 x 3.41	9' 2" x 11' 2"
Bedroom 4	2.80 x 3.03	9' 2" x 9' 11"

The Maple

The floorplan has been produced for illustrative purposes only. Room sizes shown are between arrow points as indicated on plan. The dimensions have tolerances of + or -50mm and should not be used other than for general guidance. If specific dimensions are required, enquiries should be made to the sales consultant. The floor plans shown are not to scale. Measurements are based on the original drawings. Slight variations may occur during construction.

† This is a handed plot (reflected as viewed here)

* Alternative window applies to Plots 9, 155, 160, 164 & 166

** Alternative entrance applies to Plots 9, 155, 160, 164 & 166

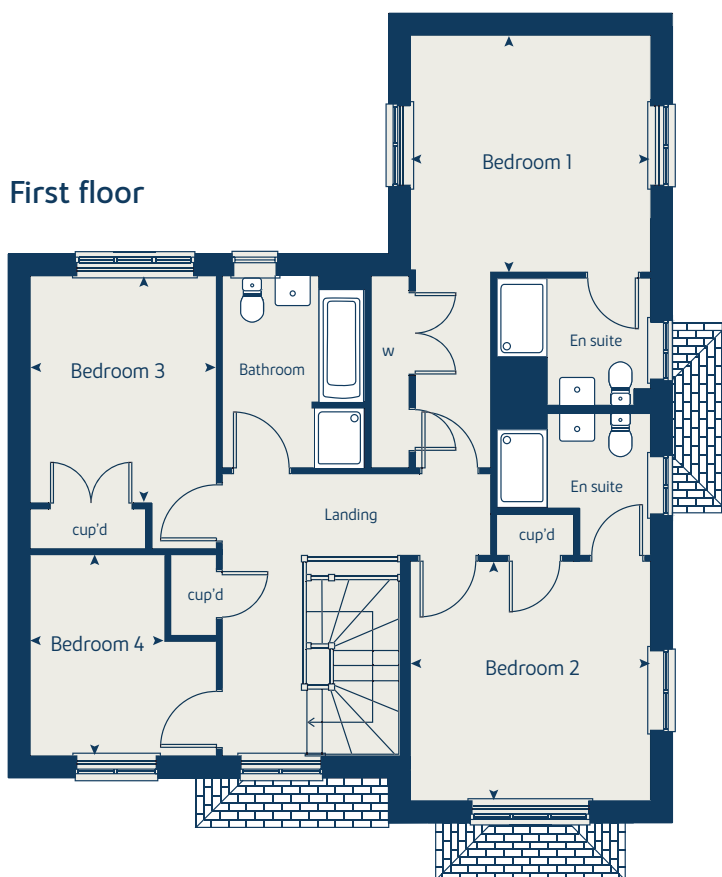
*** Alternative roofing layout applies to Plots 9, 155, 160, 164 & 166

ovn	oven	ffz	fridge freezer
h	hob	ffzs	fridge freezer space
ds	dishwasher space	tds	tumble dryer space
ws	washing machine space	cup'd	cupboard
ldr	larder	w	wardrobe
f	fridge	◀ ▶	measuring points
fzr	freezer		

The illustrations shown are computer generated impressions of how the property may look and are indicative only. External details or finishes may vary on individual plots and homes may be built in either detached or attached styles depending on the development layout. Exact specifications, window styles and whether a property is left or righthanded may differ from plot to plot. Please speak to our sales consultant for specific plot details.



First floor



Ground floor





The Mulberry

4 bedroom home

bovishomes.co.uk

**Bovis
Homes** 

The Mulberry

4 bedroom home

Plots 2, 6, 16, 58, 103, 107†, 110, 130, 145

Ground floor	metres	feet / inches
Kitchen / Dining Area	8.16 x 3.36	26' 9" x 11' 0"
Sitting Room	4.07 x 4.43	13' 4" x 14' 6"
Study	2.25 x 2.62	7' 5" x 8' 7"

First floor	metres	feet / inches
Bedroom 1	3.65 x 3.61	12' 0" x 11' 10"
Bedroom 2	2.94 x 3.38	9' 8" x 11' 1"
Bedroom 3	4.45 x 2.61	14' 7" x 8' 7"
Bedroom 4	3.76 x 2.62	12' 4" x 8' 7"

The Mulberry
 The floorplan has been produced for illustrative purposes only. Room sizes shown are between arrow points as indicated on plan. The dimensions have tolerances of + or -50mm and should not be used other than for general guidance. If specific dimensions are required, enquiries should be made to the sales consultant. The floor plans shown are not to scale. Measurements are based on the original drawings. Slight variations may occur during construction.

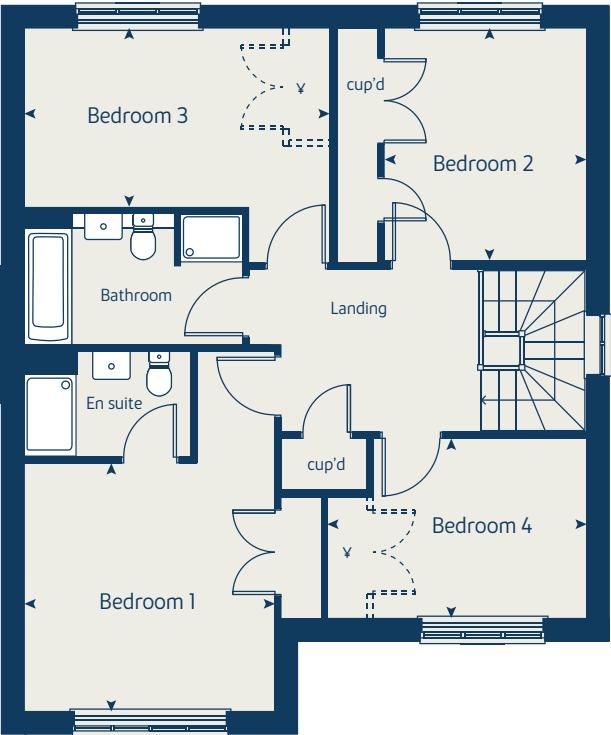
- † This is a handed plot (reflected as viewed here)
- * Alternative window applies to Plots 9, 155, 160, 164 & 166
- ** Alternative entrance applies to Plots 9, 155, 160, 164 & 166
- *** Alternative roofing layout applies to Plots 9, 155, 160, 164 & 166
- ¥ Optional fitted wardrobe for optional customer upgrade

ovn	oven	ffz	fridge freezer
h	hob	ffzs	fridge freezer space
ds	dishwasher space	tds	tumble dryer space
ws	washing machine space	cup'd	cupboard
ldr	larder	w	wardrobe
f	fridge	◀ ▶	measuring points
fzr	freezer		

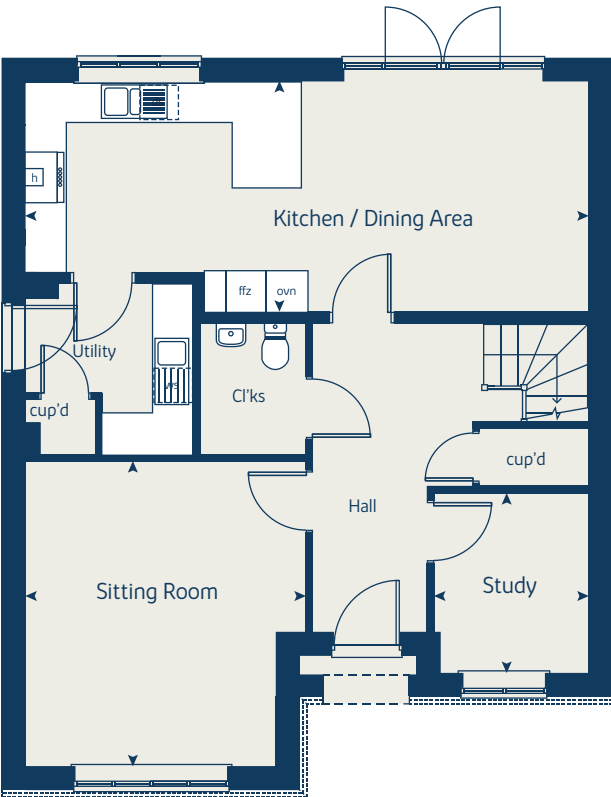
The illustrations shown are computer generated impressions of how the property may look and are indicative only. External details or finishes may vary on individual plots and homes may be built in either detached or attached styles depending on the development layout. Exact specifications, window styles and whether a property is left or righthanded may differ from plot to plot. Please speak to our sales consultant for specific plot details.



First floor



Ground floor





The Willow

4 bedroom home

bovishomes.co.uk

**Bovis
Homes** 

The Willow

4 bedroom home

Plots 3, 8, 9, 13†, 14†, 45, 52†, 54†, 75, 76†, 98, 102†, 113†, 114

Ground floor	metres	feet / inches
Kitchen / Dining Area	5.98 x 3.22	19' 7" x 10' 7"
Sitting Room	2.89 x 5.00	9' 6" x 16' 5"

First floor	metres	feet / inches
Bedroom 2	3.15 x 4.90	10' 4" x 16' 1"
Bedroom 3	3.33 x 3.36	10' 11" x 11' 0"
Bedroom 4	2.74 x 2.74	9' 0" x 9' 0"

Second floor	metres	feet / inches
Bedroom 1	4.34 x 3.73	14' 3" x 12' 3"

The Willow

The floorplan has been produced for illustrative purposes only. Room sizes shown are between arrow points as indicated on plan. The dimensions have tolerances of + or -50mm and should not be used other than for general guidance. If specific dimensions are required, enquiries should be made to the sales consultant. The floor plans shown are not to scale. Measurements are based on the original drawings. Slight variations may occur during construction.

† This is a handed plot (reflected as viewed here)

∨ Optional fitted wardrobe for optional customer upgrade

* Full ceiling height

** Reduced ceiling height - 2.1m

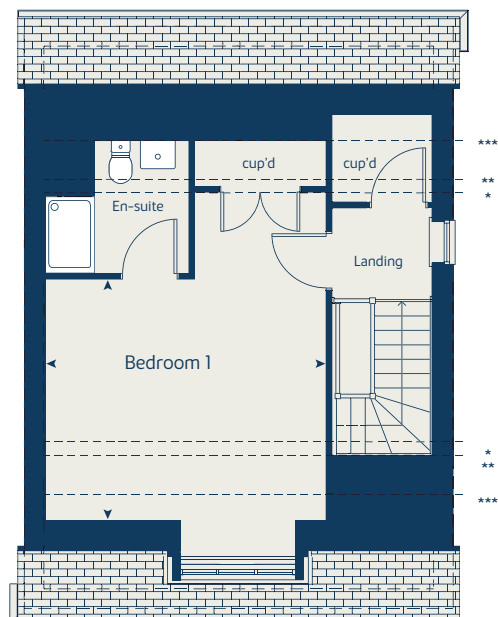
*** Reduced ceiling height - 1.5m

ovn	oven	ffz	fridge freezer
h	hob	ffzs	fridge freezer space
ds	dishwasher space	tds	tumble dryer space
ws	washing machine space	cup'd	cupboard
ldr	larder	w	wardrobe
f	fridge	◀ ▶	measuring points
fzr	freezer		

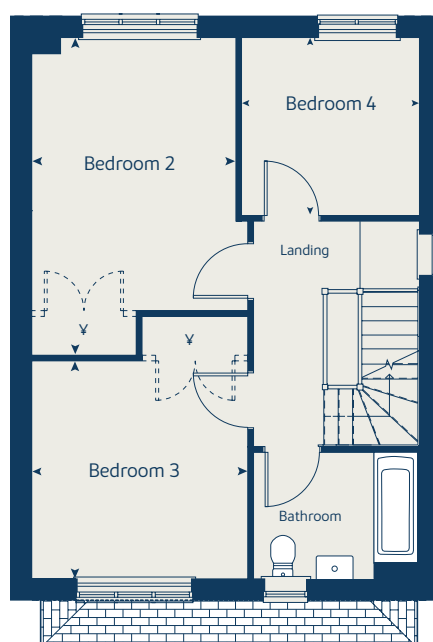
The illustrations shown are computer generated impressions of how the property may look and are indicative only. External details or finishes may vary on individual plots and homes may be built in either detached or attached styles depending on the development layout. Exact specifications, window styles and whether a property is left or righthanded may differ from plot to plot. Please speak to our sales consultant for specific plot details.



Second floor



First floor



Ground floor





The Birch

5 bedroom home

bovishomes.co.uk

**Bovis
Homes** 

The Birch

5 bedroom home

Plots 22[†], 56, 57, 72[†], 73[†], 104, 131

Ground floor	metres	feet / inches
Kitchen	3.25 x 4.58	10' 8" x 15' 0"
Dining Area	5.88 x 3.46	19' 3" x 11' 4"
Sitting Room	3.65 x 3.74	12' 0" x 12' 3"
Study / Dining / Play	2.96 x 3.61	9' 9" x 11' 10"

First floor	metres	feet / inches
Bedroom 1	3.65 x 3.22	12' 0" x 10' 7"
Bedroom 2	2.84 x 3.80	9' 4" x 12' 6"
Bedroom 3	3.01 x 3.01	9' 11" x 9' 11"
Bedroom 4	3.11 x 2.61	10' 2" x 8' 7"
Bedroom 5	3.00 x 2.61	9' 10" x 8' 7"

The Birch

The floorplan has been produced for illustrative purposes only. Room sizes shown are between arrow points as indicated on plan. The dimensions have tolerances of + or -50mm and should not be used other than for general guidance. If specific dimensions are required, enquiries should be made to the sales consultant. The floor plans shown are not to scale. Measurements are based on the original drawings. Slight variations may occur during construction.

[†] This is a handed plot (reflected as viewed here)

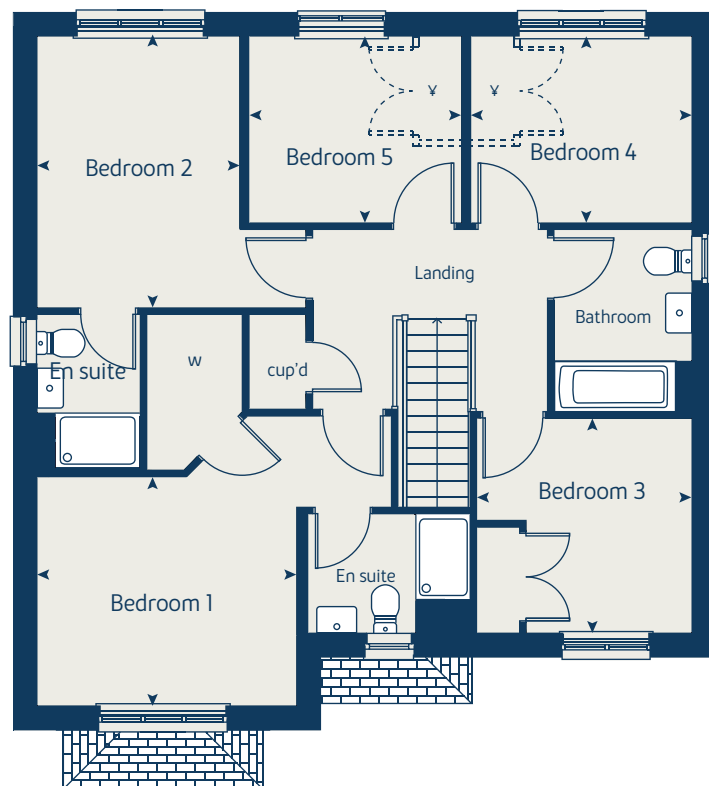
✓ Optional fitted wardrobe for optional customer upgrade

ovn	oven	ffz	fridge freezer
h	hob	ffzs	fridge freezer space
ds	dishwasher space	tds	tumble dryer space
ws	washing machine space	cup'd	cupboard
ldr	larder	w	wardrobe
f	fridge	◀ ▶	measuring points
fzr	freezer		

The illustrations shown are computer generated impressions of how the property may look and are indicative only. External details or finishes may vary on individual plots and homes may be built in either detached or attached styles depending on the development layout. Exact specifications, window styles and whether a property is left or righthanded may differ from plot to plot. Please speak to our sales consultant for specific plot details.



First floor



Ground floor





The Lime

5 bedroom home

bovishomes.co.uk

**Bovis
Homes** 

The Lime

5 bedroom home

Plots 55[†], 111, 129, 132[†], 139[†], 141[†]

Ground floor	metres	feet / inches
Kitchen	4.05 x 3.82	13' 3" x 12' 6"
Family	3.96 x 3.21	13' 0" x 10' 6"
Sitting Room	3.73 x 5.79	12' 3" x 19' 0"
Dining Room	4.05 x 3.10	13' 3" x 10' 2"
Study	2.23 x 3.21	7' 4" x 10' 6"

First floor	metres	feet / inches
Bedroom 1	4.07 x 3.86	13' 4" x 12' 8"
Bedroom 2	4.08 x 3.43	13' 5" x 11' 3"
Bedroom 3	3.32 x 3.38	10' 11" x 11' 1"
Bedroom 4	2.23 x 3.45	7' 4" x 11' 4"
Bedroom 5	2.78 x 2.75	9' 1" x 9' 0"

The Lime

The floorplan has been produced for illustrative purposes only. Room sizes shown are between arrow points as indicated on plan. The dimensions have tolerances of + or -50mm and should not be used other than for general guidance. If specific dimensions are required, enquiries should be made to the sales consultant. The floor plans shown are not to scale. Measurements are based on the original drawings. Slight variations may occur during construction.

[†] This is a handed plot (reflected as viewed here)

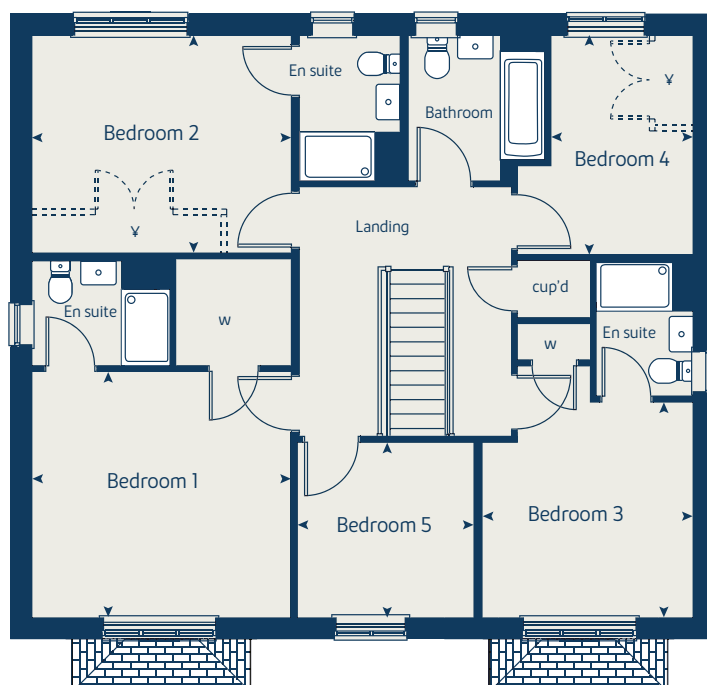
∨ Optional fitted wardrobe for optional customer upgrade

ovn	oven	ffz	fridge freezer
h	hob	ffzs	fridge freezer space
ds	dishwasher space	tds	tumble dryer space
ws	washing machine space	cup'd	cupboard
ldr	larder	w	wardrobe
f	fridge	◀ ▶	measuring points
fzr	freezer		

The illustrations shown are computer generated impressions of how the property may look and are indicative only. External details or finishes may vary on individual plots and homes may be built in either detached or attached styles depending on the development layout. Exact specifications, window styles and whether a property is left or righthanded may differ from plot to plot. Please speak to our sales consultant for specific plot details.



First floor



Ground floor

