



**27 GARRISON LANE  
CHESSINGTON  
KT9 2LD**

**£500,000**

**SEMI DETACHED HOUSE**

**THREE BEDROOMS**

**22'6 X 13'2 LIVING ROOM**

**10'4 X 9'1 KITCHEN**

**WHITE BATHROOM SUITE**

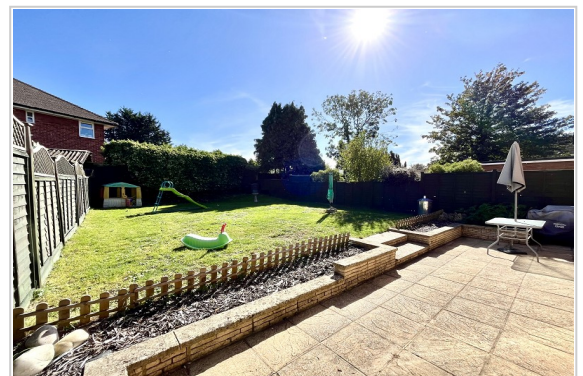
**DOUBLE GLAZED WINDOWS**

**GAS CENTRAL HEATING**

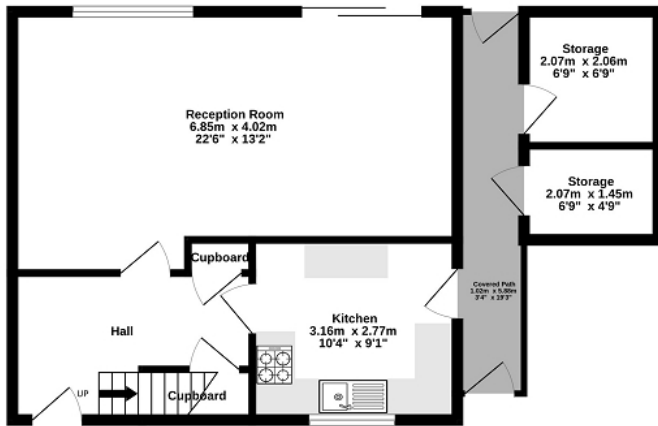
**44' X 30' SOUTH EASTERLY FACING GARDEN**

**WELL PRESENTED**

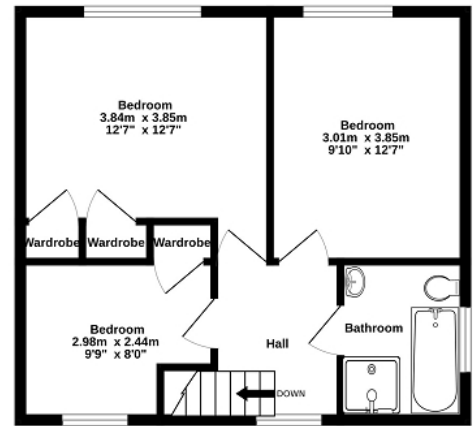
**AN IDEAL FAMILY HOME**



Ground Floor  
44.6 sq.m. (480 sq.ft.) approx.



1st Floor  
44.6 sq.m. (480 sq.ft.) approx.



TOTAL FLOOR AREA : 89.2 sq.m. (960 sq.ft.) approx.

Whilst every attempt has been made to ensure the accuracy of the floorplan contained here, measurements of doors, windows, rooms and any other items are approximate and no responsibility is taken for any error, omission or mis-statement. This plan is for illustrative purposes only and should be used as such by any prospective purchaser. The services, systems and appliances shown have not been tested and no guarantee as to their operability or efficiency can be given.  
Made with Metropix ©2023

Energy Efficiency Rating		
	Current	Potential
Very energy efficient - lower running costs		
(92+) <b>A</b>		
(81-91) <b>B</b>		86
(69-80) <b>C</b>	72	
(55-68) <b>D</b>		
(39-54) <b>E</b>		
(21-38) <b>F</b>		
(1-20) <b>G</b>		
Not energy efficient - higher running costs		
England, Scotland & Wales		EU Directive 2002/91/EC

The energy efficiency rating is a measure of the overall efficiency of a home. The higher the rating the more energy efficient the home is and the lower the fuel bills will be.