

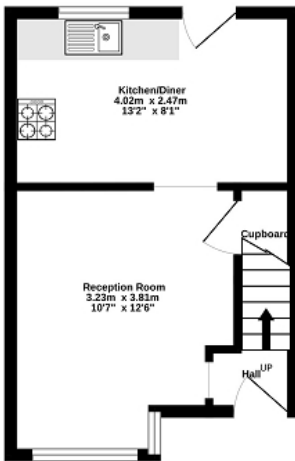


**123 GILDERS ROAD  
CHESSINGTON  
SURREY  
KT9 2EB  
£389,950**

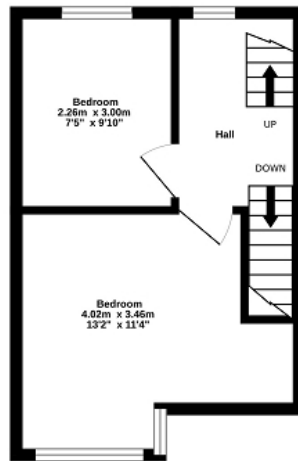
**TERRACED HOUSE  
PARTIALLY RENOVATED  
THREE BEDROOMS  
12'6 X 10'7 LIVING ROOM  
13'2 X 8'1 KITCHEN DINING ROOM  
MODERN SHOWER ROOM  
DOUBLE GLAZED WINDOWS  
GAS CENTRAL HEATING  
57' SOUTH EASTERLY GARDEN  
OFF STREET PARKING TO THE REAR**



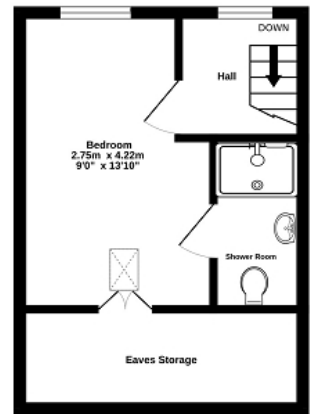
Ground Floor  
24.1 sq.m. (259 sq.ft.) approx.



1st Floor  
24.0 sq.m. (258 sq.ft.) approx.



2nd Floor  
22.6 sq.m. (244 sq.ft.) approx.



TOTAL FLOOR AREA : 70.7 sq.m. (761 sq.ft.) approx.

Whilst every attempt has been made to ensure the accuracy of the floorplan contained here, measurements of doors, windows, rooms and any other items are approximate and no responsibility is taken for any error, omission or mis-statement. This plan is for illustrative purposes only and should be used as such by any prospective purchaser. The services, systems and appliances shown have not been tested and no guarantee as to their operability or efficiency can be given.  
Made with Metropix ©2025



## Energy Efficiency Rating

	Current	Potential
Very energy efficient - lower running costs		
(92+) <b>A</b>		
(81-91) <b>B</b>		88
(69-80) <b>C</b>	71	
(55-68) <b>D</b>		
(39-54) <b>E</b>		
(21-38) <b>F</b>		
(1-20) <b>G</b>		
Not energy efficient - higher running costs		
<b>England, Scotland &amp; Wales</b>	EU Directive 2002/91/EC	

The energy efficiency rating is a measure of the overall efficiency of a home. The higher the rating the more energy efficient the home is and the lower the fuel bills will be.