



1

Bedroom



1

Bathroom





1/2 Bedroom ground floor garden flat

Greengate Residential is delighted to announce the sale of this bright and spacious ground-floor converted 1/2-bed flat. Situated minutes from Silver Street rail station and North Middlesex Hospital.

The flat has direct access to its own section of garden and boasts large, spacious rooms throughout. It also has a 2nd room currently used as a child's playroom, but could easily convert into a home office or study. The lounge is large with high ceilings, as is the kitchen and main bedroom.

An early viewing is highly recommended.

Benefits include

Large rooms

Own Garden

FGCH

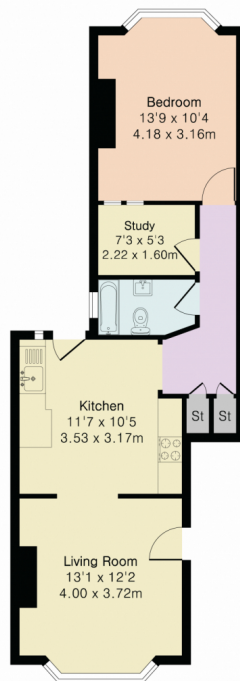
Ground Floor

Study/Office

Low maintenance costs

Chain Free

Approximate Gross Internal Area 572 sq ft - 53 sq m



Ground Floor



Floor plan produced in accordance with RICS Property Measurement 2nd Edition. Although Pink Plan Ltd ensures the highest level of accuracy, measurements of doors, windows and rooms are approximate and no responsibility is taken for error, omission or misstatement. These plans are for representation purposes only and no guarantee is given on the total square footage of the property within this plan. The figure icon is for initial guidance only and should not be relied on as a basis of valuation.

