



3

Bedrooms



1

Bathroom



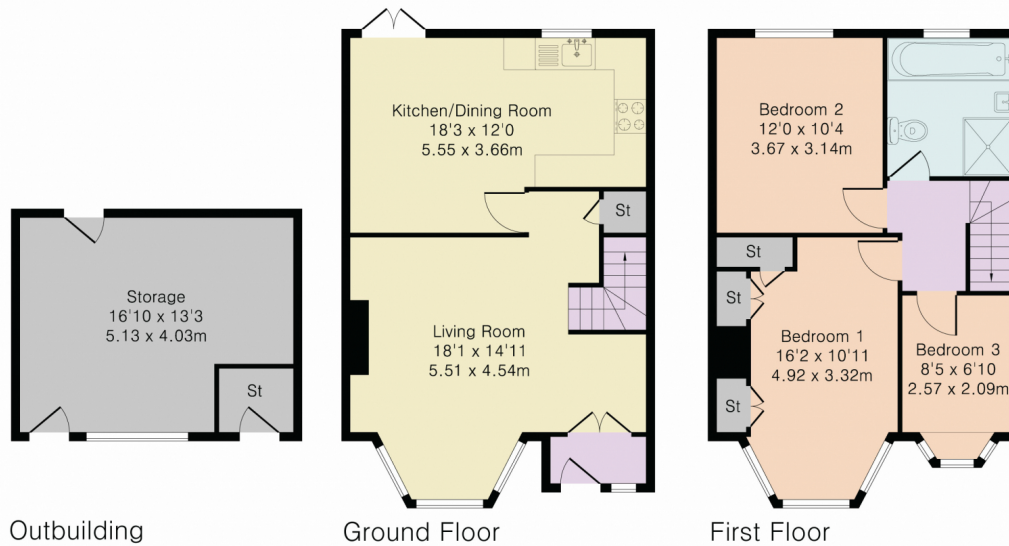
Greengate Residential is delighted to offer for sale this beautifully presented three-bedroom bay-fronted mid-terrace house. The property is offered with a wealth of features including a boarded loft room, open plan kitchen/diner and large outbuilding to rear. Further benefits include gas central heating, double glazed windows and spacious bedrooms. Located within walking distance of Turkey Street Station (15 min walk) and very easy access to A10 and M25.

Approximate Gross Internal Area 1188 sq ft - 110 sq m

Ground Floor Area 489 sq ft – 45 sq m

First Floor Area 476 sq ft – 44 sq m

Outbuilding Area 223 sq ft – 21 sq m



Although Pink Plan Ltd ensures the highest level of accuracy, measurements of doors, windows and rooms are approximate and no responsibility is taken for error, omission or misstatement. These plans are for representation purposes only as defined by RICS code of measuring practise. No guarantee is given on total square footage of the property within this plan. The figure icon is for initial guidance only and should not be relied on as a basis of valuation.



Energy Efficiency Rating		
	Current	Potential
Very energy efficient - lower running costs		
(92+) A		
(81-91) B		89
(69-80) C	72	
(55-68) D		
(39-54) E		
(21-38) F		
(1-20) G		
Not energy efficient - higher running costs		
England, Scotland & Wales		EU Directive 2002/91/EC

Address: Waltham Cross , EN8 8EY

