



Greenco Property Group

PROPERTY REPORT

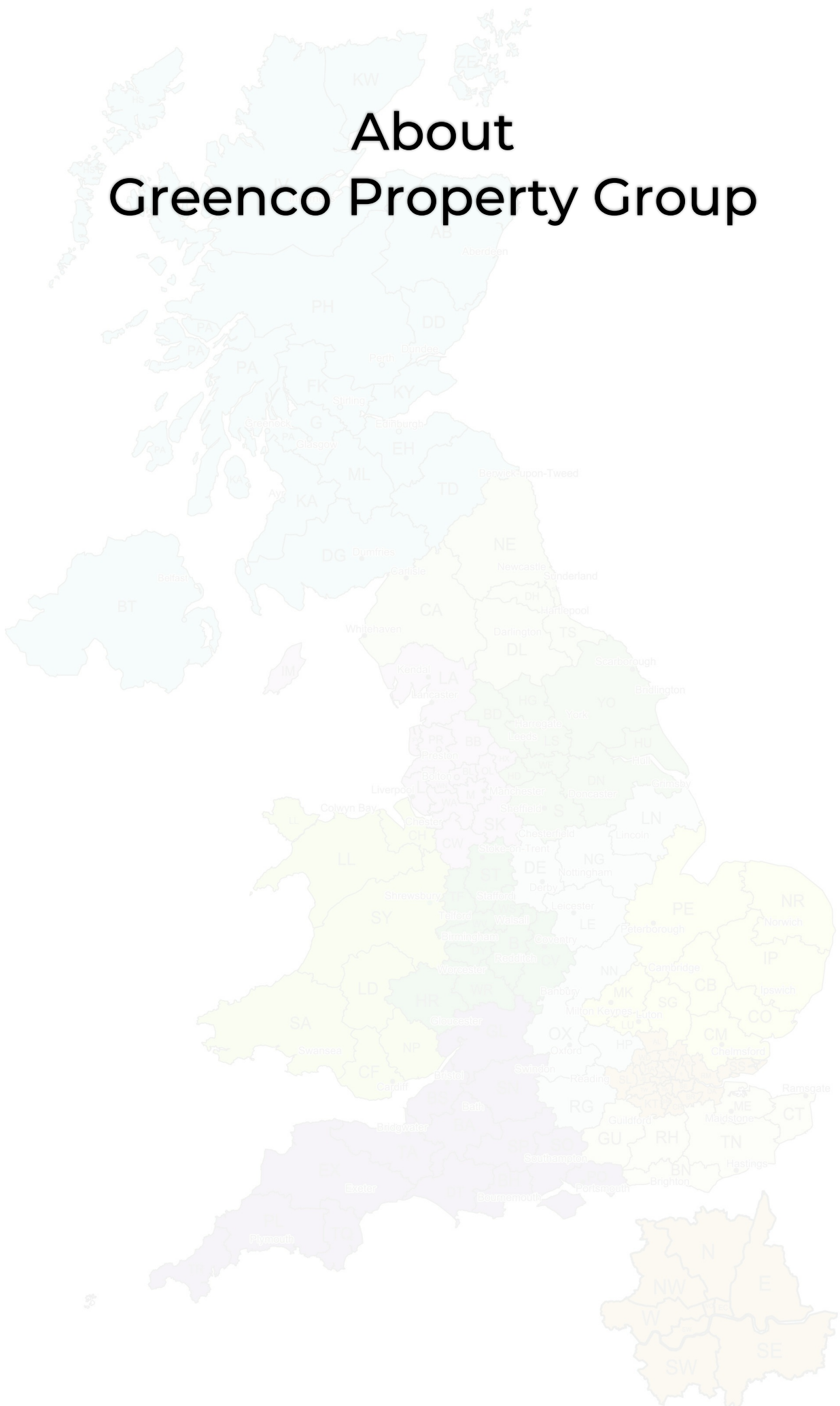
Report Generated on 24 / 01 / 2025



■ Beverley Close, Manchester, M45 8BB



About Greenco Property Group

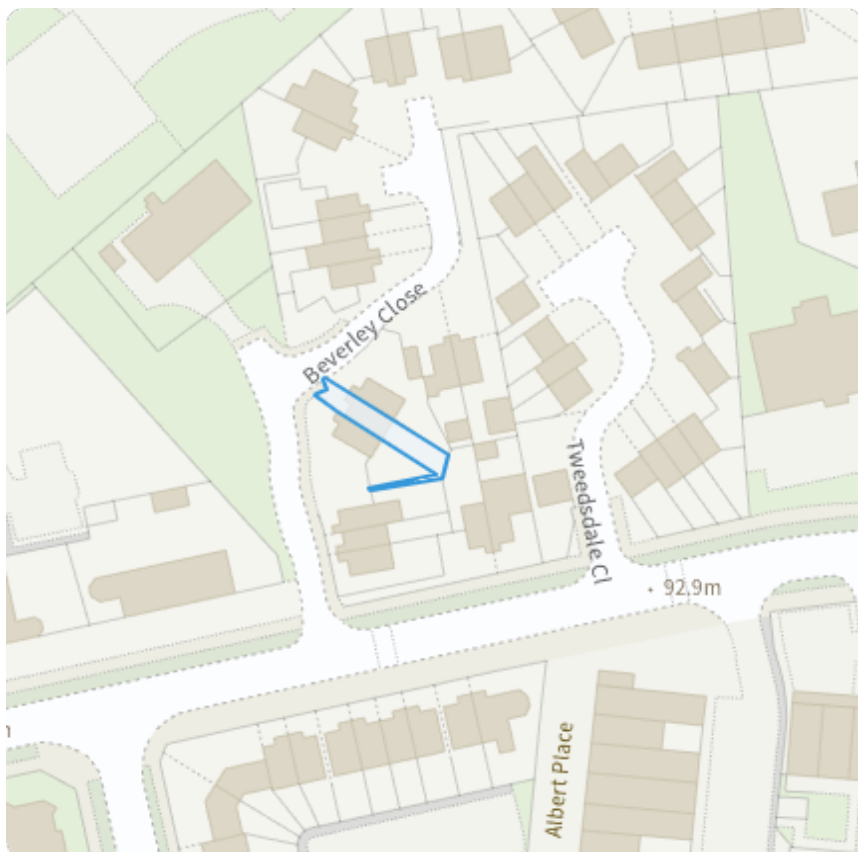


REPORT CONTENT

ABOUT US	1
STREET VIEW / ORDNANCE SURVEY MAP	3
PROPERTY SUMMARY	4
PROPERTY IMAGES	5
EPC	7
NEIGHBOURING PLANNING HISTORY	8
NEAREST PRIMARY SCHOOLS	9
NEAREST SECONDARY SCHOOLS	10
UNIVERSITIES AND COLLEGES	11
TRANSPORTATION LINKS	12
NEAREST HOSPITAL / GP / DENTIST / NHS	13
CONNECTIVITY	14



STREET VIEW / ORDNANCE SURVEY MAP



PROPERTY SUMMARY

KEY FEATURES



-
CURRENT MARKET
PRICE



Terraced
PROPERTY TYPE



2
BEDROOMS



1
BATHROOMS



614.00 Sqft
(57.04 SQ. M.)
FLOOR AREA



£155,000
LAST SOLD PRICE



07-10-2021
LAST SOLD DATE



GM683937
TITLE NUMBER



Freehold
TENURE



1996-2002
YEAR BUILT



YES
COMPANY OWNED



Flood Risk
Area
FLOOD RISK

KEY DETAILS

Bury

COUNCIL

Bury South

CONSTITUENCY

North West

REGION

71 / C

EPC RATING

[Domestic EPC in the Area](#)

[Non-Domestic EPC in the Area](#)

EPC RATINGS IN THE AREA

-

PLANNING APPLICATION

No

PARKING FACILITIES

No

ACCESSIBILITY FEATURES

Yes

GAS SUPPLY

Yes

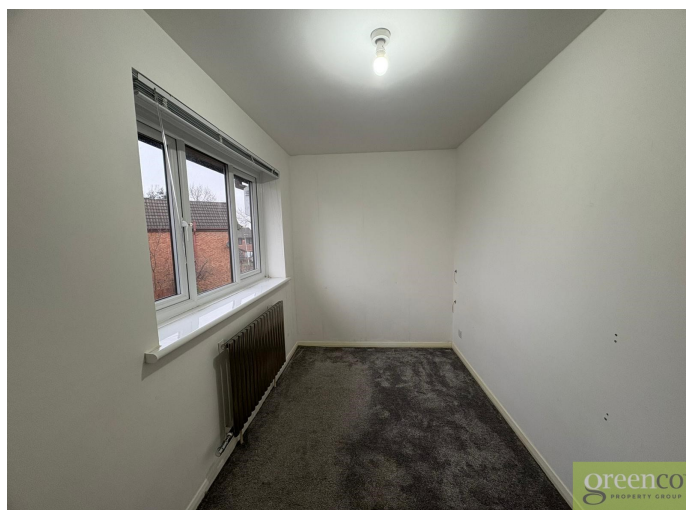
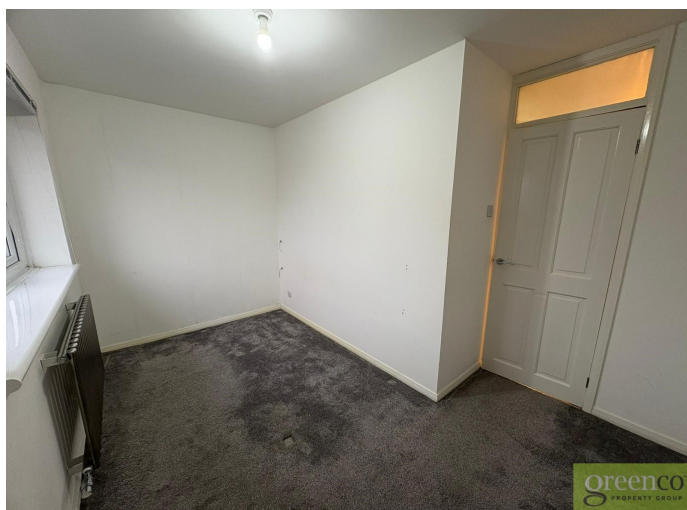
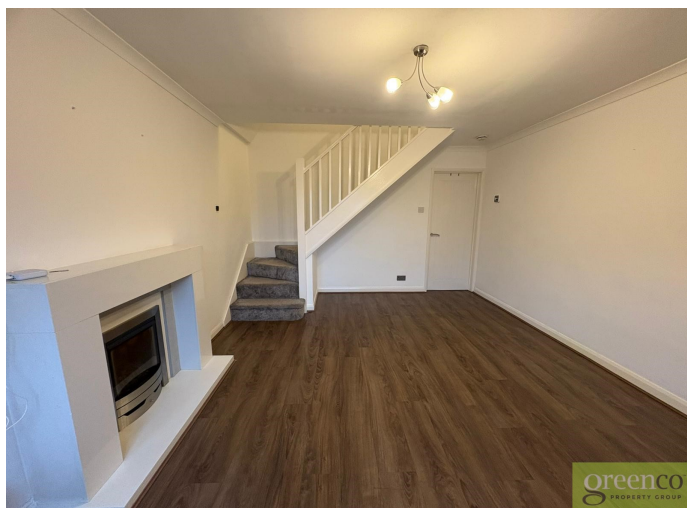
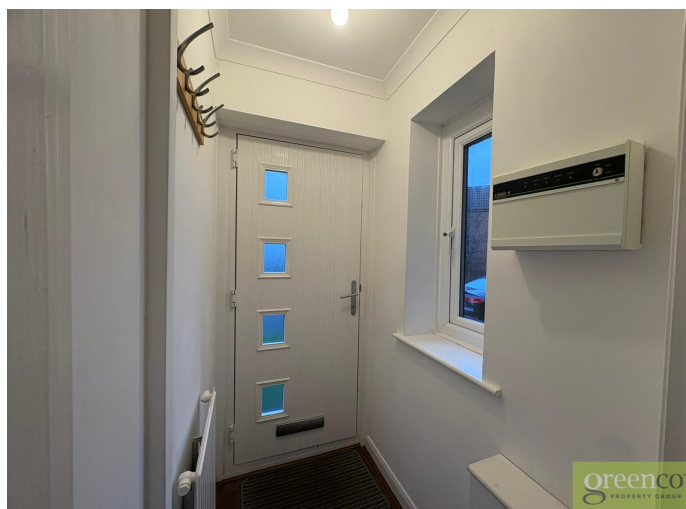
ELECTRICITY SUPPLY

Yes

WATER SUPPLY

PROPERTY IMAGES

Browse through the property images to get a better idea -
Take a look at the property images.



PROPERTY IMAGES



EPC - ENERGY PERFORMANCE CERTIFICATE

■ Beverley Close,
Manchester,
M45 8BB

Energy Rating

C

Valid until
10-08-2031

This property's current energy rating is **71/C**. It has the potential to be **87/B**.
See how to improve this property's energy efficiency.

Energy Efficiency Rating		
Very Energy Efficient - Lower Running Costs	Current	Potential
(92+) A		
(81-91) B		87
(69-80) C	71	
(55-68) D		
(39-54) E		
(21-38) F		
(1-20) G		
Very Low Energy Efficient - Higher Running Costs		

Roof	Pitched, 100 mm loft insulation
Walls	Cavity wall, as built, insulated (assumed)
Window	Fully double glazed
Floor	Solid, limited insulation (assumed)
Main Heating	Boiler and radiators, mains gas
Main Heating Controls	Programmer, room thermostat and TRVs
Secondary Heating	None
Hot Water System	From main system
Lighting	Low energy lighting in all fixed outlets

Current Efficiency	71 / C
Potential Efficiency	87 / B
Inspection Date	10-08-2021
Valid Until	10-08-2031
Tenure	Owner-occupied
Habitable Rooms	3
Heated Rooms	3
Local Authority	Bury E08000002 (click to know more)
Total Floor Area	614.00 Sq.Ft. (57.04 Sq.M.)
Property Type	House
Roof Efficiency	Average
Wall Efficiency	Good
Window Efficiency	Average
Floor Efficiency	Unknown
Main Heating Efficiency	Good
Secondary Heating Efficiency	-
Hot Water Efficiency	Good
Lighting Efficiency	Very Good
Floors	-
Floor Height	2.35(m)

NEIGHBOURING PLANNING HISTORY



24-05-2017

Ref.No.
61320

17 Beverley Close, Whitefield,
Manchester, M45 8BB

Decision -

Approve with Conditions

Description -

Single storey rear extension



NEAREST PRIMARY SCHOOLS



**Beverley Close,
Manchester,
M45 8BB**



Outstanding



Good



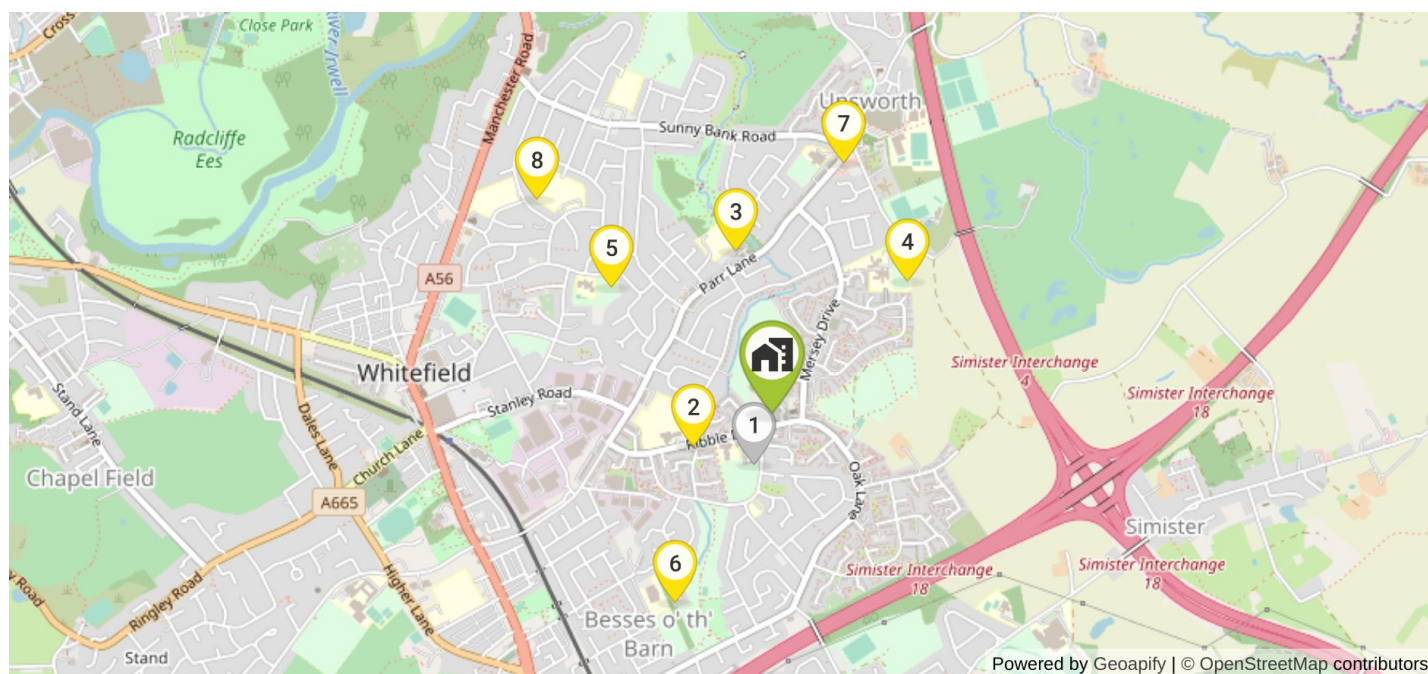
Requires Improvement



Lowest



Not Rated



St Michael's Roman Catholic Primary School, a Voluntary Academy

Ribble Drive, Whitefield, Manchester, Lancashire, M45 8NJ

PUPILS	Mixed	No	No	0.12 Miles
	GENDER	HAS NURSERY	PRIVATE	DISTANCE



Ribble Drive Community Primary School

Ribble Drive, Whitefield, Manchester, M45 8TD

192	Mixed	No	No	0.19 Miles
PUPILS	GENDER	HAS NURSERY	PRIVATE	DISTANCE



Unsworth Primary School

Blackley Close, Unsworth, Bury, Lancashire, BL9 8LY

218	Mixed	No	No	0.37 Miles
PUPILS	GENDER	HAS NURSERY	PRIVATE	DISTANCE



Mersey Drive Community Primary School

Mersey Drive, Whitefield, Manchester, M45 8LN

196	Mixed	No	No	0.42 Miles
PUPILS	GENDER	HAS NURSERY	PRIVATE	DISTANCE



All Saints Church of England Primary School, Stand

Rufford Drive, Whitefield, Manchester, M45 8PL

239	Mixed	No	No	0.45 Miles
PUPILS	GENDER	HAS NURSERY	PRIVATE	DISTANCE



Whitefield Community Primary School

Victoria Avenue, Whitefield, Manchester, M45 6DP

164	Mixed	No	No	0.47 Miles
PUPILS	GENDER	HAS NURSERY	PRIVATE	DISTANCE



Bury and Whitefield Jewish Primary School

Parr Lane, Unsworth, Bury, Lancashire, BL9 8JT

95	Mixed	No	No	0.57 Miles
PUPILS	GENDER	HAS NURSERY	PRIVATE	DISTANCE



St Bernadette's Roman Catholic Primary School, Whitefield

Abingdon Avenue, Whitefield, Manchester, Lancashire, M45 8PT

333	Mixed	No	No	0.7 Miles
PUPILS	GENDER	HAS NURSERY	PRIVATE	DISTANCE



NEAREST SECONDARY SCHOOLS



**Beverley Close,
Manchester,
M45 8BB**



Outstanding



Good



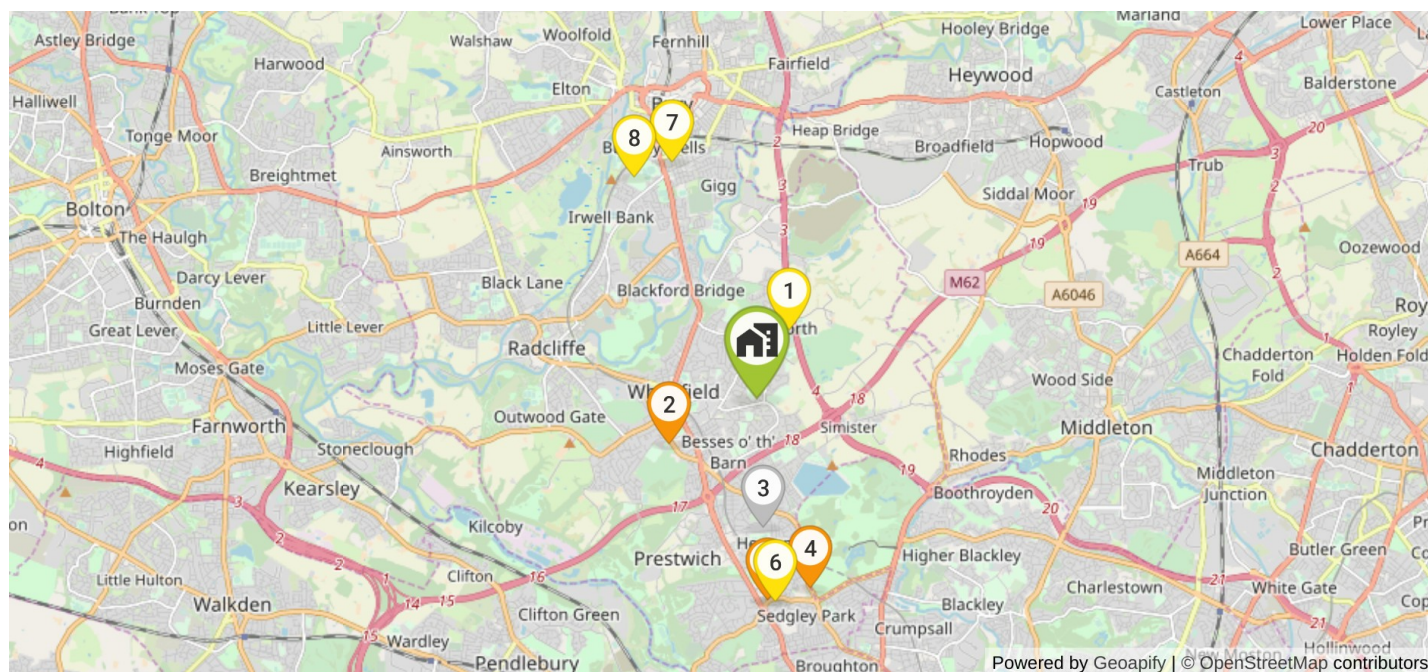
Requires Improvement



Lowest



Not Rated



Unsworth Academy

Parr Lane, Bury, Lancashire, BL9 8LP

910 **Mixed** **No** **No** **0.73 Miles**
PUPILS GENDER HAS NURSERY PRIVATE DISTANCE



Philips High School

Higher Lane, Whitefield, Manchester, M45 7PH

883 **Mixed** **No** **No** **0.93 Miles**
PUPILS GENDER HAS NURSERY PRIVATE DISTANCE



The Heys School

Heys Road, Prestwich, Manchester, M25 1JZ

617 **Mixed** **No** **No** **1.2 Miles**
PUPILS GENDER HAS NURSERY PRIVATE DISTANCE



St Monica's RC High School, a Voluntary Academy

Bury Old Road, Prestwich, Manchester, Greater Manchester, M25 1JH

1133 **Mixed** **No** **No** **1.84 Miles**
PUPILS GENDER HAS NURSERY PRIVATE DISTANCE



Manchester Mesivta School

Beechwood, Charlton Avenue, Prestwich, Greater Manchester, M25 0PH

232 **Boys** **No** **No** **1.89 Miles**
PUPILS GENDER HAS NURSERY PRIVATE DISTANCE



Parrenthorn High School

Heywood Road, Prestwich, Manchester, M25 2BW

987 **Mixed** **No** **No** **1.91 Miles**
PUPILS GENDER HAS NURSERY PRIVATE DISTANCE



Holy Cross College

169 Manchester Road, Bury, Greater Manchester, BL9 9BB

PUPILS **Mixed** **No** **No** **2.4 Miles**
GENDER HAS NURSERY PRIVATE DISTANCE



The Derby High School

Radcliffe Road, Redvales, Lancs, Lancashire, BL9 9NH

926 **Mixed** **No** **No** **2.41 Miles**
PUPILS GENDER HAS NURSERY PRIVATE DISTANCE

UNIVERSITIES & COLLEGES



**Beverley Close,
Manchester,
M45 8BB**



★★★★★



★★★★☆



★★★★☆



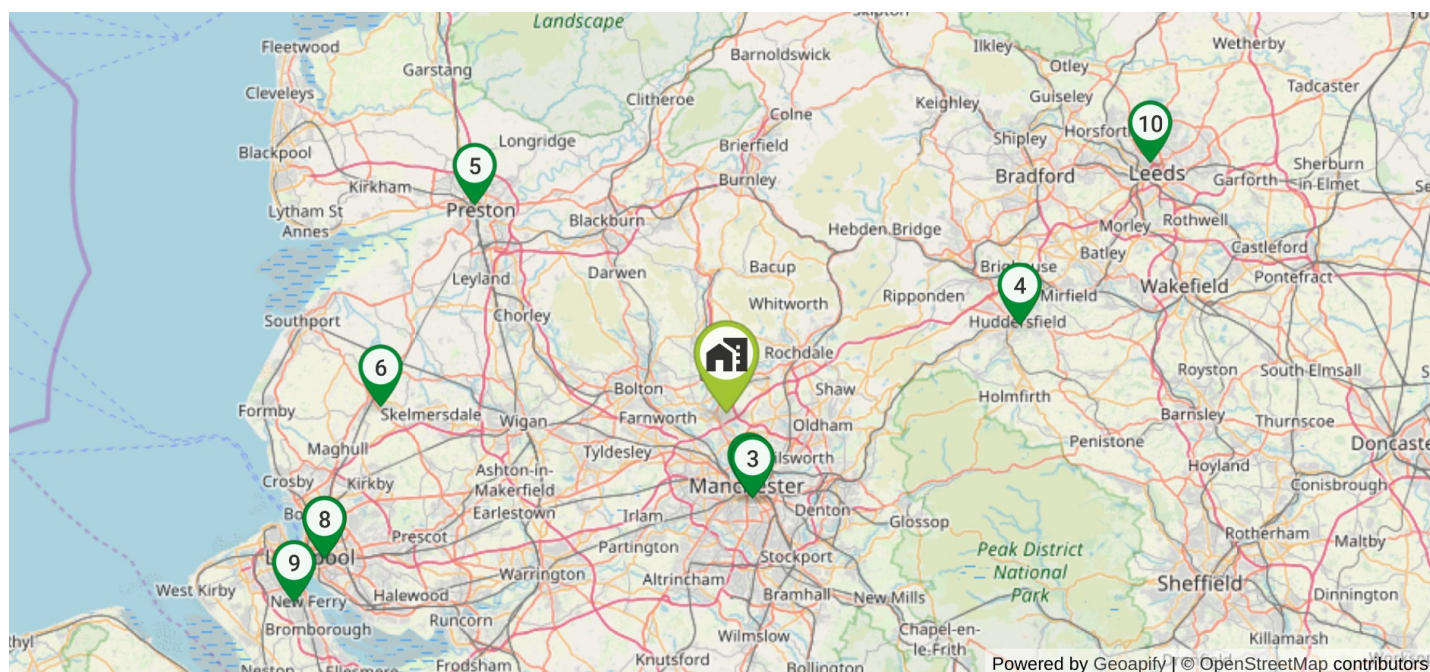
★★★★☆



★★★★☆



No Rating



Manchester Metropolitan University

★★★★★

All Saints, All Saints Building, Manchester
M15 6BH, United Kingdom

5.86 Miles
DISTANCE



Manchester University

★★★★★

Oxford Rd, Manchester M13 9PL, United Kingdom

6.15 Miles
DISTANCE



University of Manchester

★★★★★

Oxford Rd, Manchester M13 9PL, United Kingdom

6.15 Miles
DISTANCE



Huddersfield University

★★★★★

Queensgate, Huddersfield HD1 3DH, United Kingdom

21.43 Miles
DISTANCE



University of Central Lancashire

★★★★★

Fylde Rd, Preston PR1 2HE, United Kingdom

22.95 Miles
DISTANCE



Edge Hill University

★★★★★

St Helens Rd, Ormskirk L39 4QP, United Kingdom

24.33 Miles
DISTANCE



University of Liverpool

★★★★★

Liverpool L69 3BX, United Kingdom

30.04 Miles
DISTANCE



Liverpool University

★★★★★

Liverpool L69 3BX, United Kingdom

30.05 Miles
DISTANCE



Liverpool John Moores University

★★★★★

Liverpool John Moores University, 70 Mount Pleasant, Merseyside L3 5UX, United Kingdom

33.22 Miles
DISTANCE



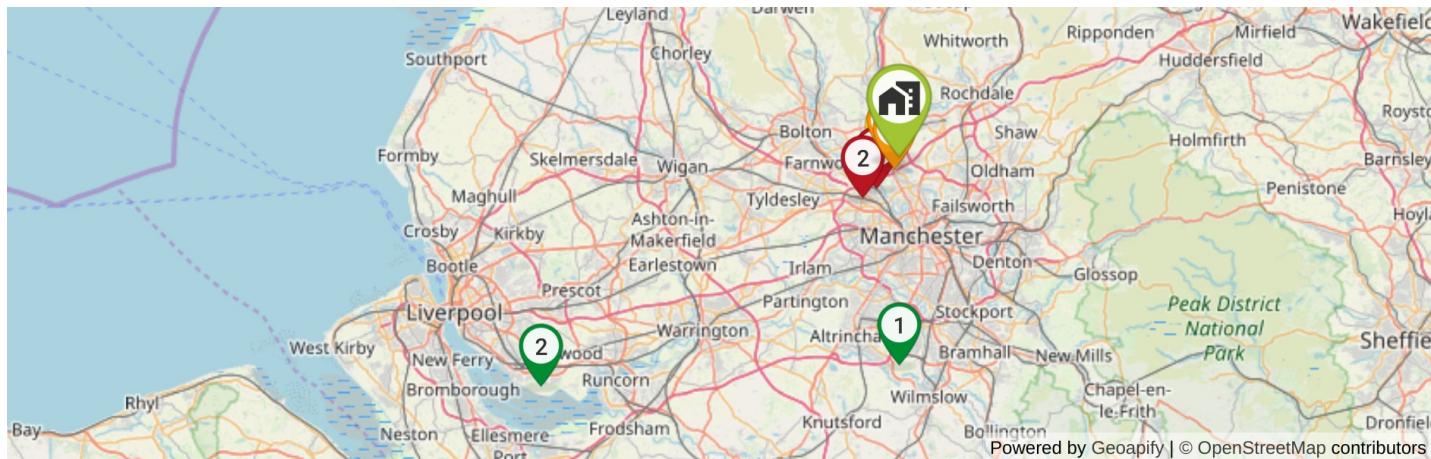
Leeds University

★★★★★

Woodhouse, Leeds LS2 9JT, United Kingdom

34.41 Miles
DISTANCE

TRANSPORT LINKS



AIRPORTS

- 1 Manchester Airport, Manchester M90 1QX, United Kingdom
13.58 Miles
- 2 Liverpool John Lennon Airport, Speke Hall Ave, Speke, Liverpool L24 1YD, United Kingdom
28 Miles
- 3 Leeds Bradford Airport, Leeds Bradford Airport, Mid stay 2, Yeadon, Leeds LS19 7TU, United Kingdom
33.69 Miles



BUS STATION

- 1 Eagle & Child, United Kingdom
0.89 Miles
- 2 Park Lane, United Kingdom
0.9 Miles
- 3 Bury New Road (Stop B), United Kingdom
0.93 Miles



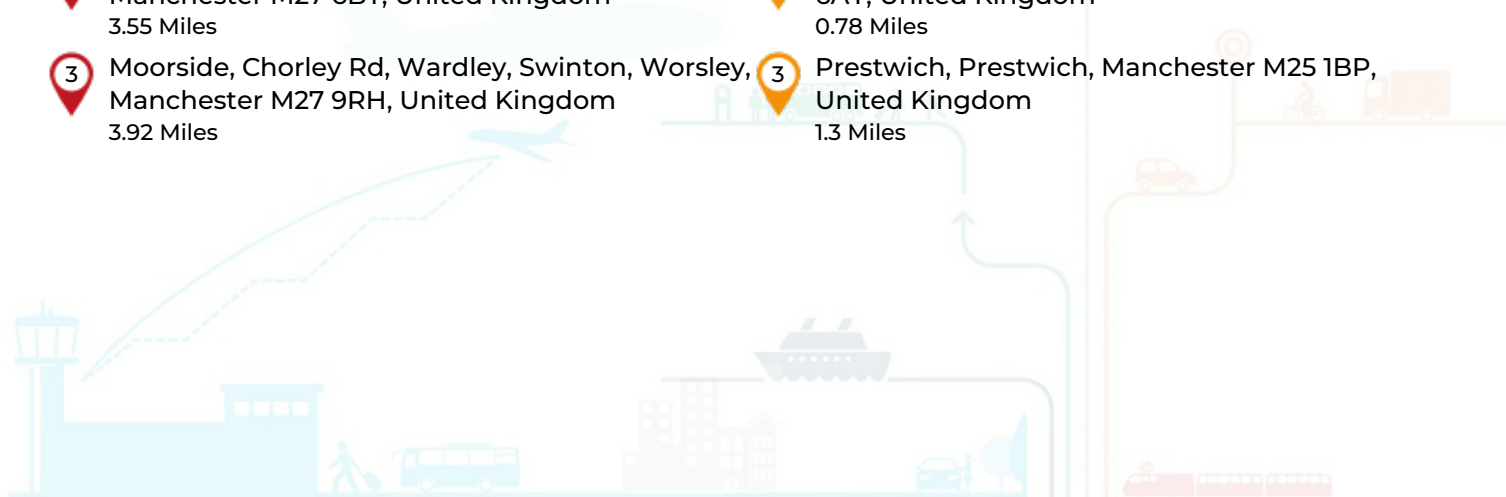
TRAIN STATION

- 1 Clifton, Swinton, Clifton, Manchester M27 8LT, United Kingdom
2.53 Miles
- 2 Swinton (Greater Manchester), Pendlebury, Manchester M27 6BT, United Kingdom
3.55 Miles
- 3 Moorside, Chorley Rd, Wardley, Swinton, Worsley, Manchester M27 9RH, United Kingdom
3.92 Miles



TRAM STATIONS

- 1 Whitefield, Whitefield, Manchester M45 8FJ, United Kingdom
0.71 Miles
- 2 Besses o'th'Barn, Whitefield, Manchester M45 6AY, United Kingdom
0.78 Miles
- 3 Prestwich, Prestwich, Manchester M25 1BP, United Kingdom
1.3 Miles



NEAREST HOSPITALS / GP / DENTISTS / NHS



HOSPITALS (NHS)

Cygnets Hospital Bury
Buller Street Bury BL8 2BS
2.91 Miles

North Manchester General Hospital
Delaunays Road Manchester M8 5RB
3.08 Miles

Fairfield Hospital
Rochdale Old Road Bury BL9 7TD
3.47 Miles



GP (NHS)

Blackford House Medical Centre
137 Croft Lane Hollins Bury BL9 8QA
1.55 Miles

Monarch Medical Centre
65 Cross Lane Radcliffe Manchester M26 2QZ
1.81 Miles

Redbank Group Practice
Sun Suite 2Nd Floor Radcliffe Primary Care Centre 69 Church Street West Radcliffe M26 2SP
1.97 Miles



DENTIST (NHS)

Unsworth Smile Clinic
Unsworth Smile Clinic 1st Floor, 57 Parr Lane, Unsworth BL9 8JR
0.63 Miles

Whitefield Orthodontic Clinic
Whitefield Orthodontic Clinic 208 Bury New Road Whitefield M45 6GG
0.71 Miles

Carisbrook Dental
Knowsley Road Knowsley Road Whitefield M45 6BF
0.75 Miles



HOSPITALS (CQC)

Hey Baby 4D Radcliffe
2 Dale Street Radcliffe Manchester M26 1AB
2.03 Miles

HMP Forest Bank
H M FOREST BANK PRISON, Forestbank Swinton Manchester M27 8FB
2.79 Miles

12 Crompton Street
12 Crompton Street Bury BL9 0AD
2.95 Miles



GP (CQC)

Unsworth Medical Centre
Parr Lane Unsworth Bury BL9 8JR
0.63 Miles

The Elms Medical Centre
Green Lane Whitefield Manchester M45 7FD
0.72 Miles

The Uplands Medical Practice
Bury New Road Manchester M45 8GH
0.78 Miles



DENTIST (CQC)

Unsworth Smile Clinic
1st Floor, 57 Parr Lane Unsworth Bury BL9 8JR
0.63 Miles

Whitefield Orthodontic Clinic
Orthodontic Practice 208 Bury New Road, Whitefield Manchester M45 6GG
0.71 Miles

Mr Tariq Idrees - Carisbrook
6 Knowsley Road Whitefield Manchester M45 6BF
0.75 Miles



RESPONSE TIMES OF NHS SERVICES

Category Approx. Response Time

C1 00 hrs 08 mins 07 secs

C1T 00 hrs 10 mins 07 secs

C2 00 hrs 32 mins 04 secs

C3 02 hrs 33 mins 44 secs

C4 02 hrs 32 mins 00 secs

C1: Calls from people with life-threatening illnesses or injuries such as cardiac arrest or serious allergic reaction (fastest response)

C1T: Calls from people with life-threatening illnesses or injuries such as cardiac arrest or serious allergic reaction where the patient was transported (fastest response)

C2: Emergency calls for conditions and injuries such as burns, epilepsy and strokes (high priority)

C3: Urgent calls for conditions and injuries such as late stages of labour, non-severe burns, and diabetes. Transportation to A&E may not be required

C4: Less urgent calls for conditions such as diarrhoea and vomiting and urine infections and flu. Advice via phone / GP referral may be recommended over the phone

BROADBAND & MOBILE





Broadband - Predicted Broadband Speeds



Speed Type	Download Speed	Upload Speed
Basic	14 Mbps	1 Mbps
Superfast	74 Mbps	20 Mbps
Ultrafast	1800 Mbps	220 Mbps

Mobile Coverage - Based on voice calls made



 INDOOR SPEED Good OUTDOOR SPEED Very Good	 INDOOR SPEED Good OUTDOOR SPEED Very Good	 INDOOR SPEED Very Good OUTDOOR SPEED Very Good	 INDOOR SPEED Very Good OUTDOOR SPEED Very Good
-------------------------------------------------------------------------------------------------------------------------------------------------------	-------------------------------------------------------------------------------------------------------------------------------------------------------	-------------------------------------------------------------------------------------------------------------------------------------------------------------	--------------------------------------------------------------------------------------------------------------------------------------------------------------

DATA PROVIDERS



 19 Leicester Road, Salford, M7 4AS

 **Tel: 01617088629**

 Email: sales@greenco.co.uk

Disclaimer : The information contained within this report is for general information purposes only and to act as a guide.

Lets Bid Property aggregate this data from a wide variety of sources and while we endeavour to keep the information up to date and correct, we make no representations or warranties of any kind, express or implied, about the completeness, accuracy, reliability, of the information or related graphics contained within this report for any purpose. Any reliance you place on such information is therefore strictly at your own risk. In no event will we be liable for any loss or damage including without limitation, indirect or consequential loss or damage, or any loss or damage whatsoever arising from loss of data or profits arising out of, or in connection with, the use of this report.