

EE  
ON  
AN  
GE  
EE  
LE  
EE

DETACHED VILLAS  
LOMAS DE MARBELLA CLUB



# LOCATION

Sophisticated 4 detached villas are located in a prestigious urbanization on the Golden Mile - **Lomas de Marbella Club**.

It is one of the most popular luxury residential areas in Marbella, maintaining its elegant and original appearance, with spacious and perfect green areas, 24 hour security, quality of life and architecture.

The urbanization is located 10 minutes from the center of Marbella, 40 km from Malaga International Airport, 50 km from the AVE station and 85 km from Gibraltar Airport.







Its location north of the Golden Mile, in front of Puente Romano and near the Royal Mosque with its impressive Andalusian Arabic architecture, makes it a privileged area.

This urbanization welcomes all kinds of local and international celebrities, Spanish nobles and European elites, being a very exclusive urbanization with the most expensive villas and mansions in the area.

On the other hand, the urbanization is close to a mythical 5\* hotel, Michelin star restaurants, numerous golf courses and international schools, Marbella and Puerto Banús. Wide variety of fashion boutiques, restaurants and nightlife.







DETACHED VILLAS  
LOMAS DE MARBELLA CLUB

PUERTO BANÚS

GOLF COURSE  
DAMA DE NOCHE

HOTEL  
PUENTE ROMANO

HOTEL  
MARBELLA CLUB

MARBELLA





# DETACHED VILLAS

LOMAS DE MARBELLA CLUB

- 6 BEDROOMS
- 6 BATHROOMS
- 2 TOILETS
- SOLARIUM
- GYM
- LAUNDRY ROOM
- DIRTY KITCHEN
- GARAGE
- SALTWATER SWIMMING POOL
- LARGE TERRACES

VILLA	PLOT	BUILD	TERRACE	PRICE
VILLA 1	1469m²	615m²	343m²	SOLD
VILLA 2	1441m²	647m²	284m²	6.400.000 €

VILLA	PLOT	BUILD	TERRACE	PRICE
VILLA 3	1442m²	647m²	284m²	6.500.000 €
VILLA 4	1528m²	641m²	364m²	SOLD















Beauty, elegance and comfort characterize these south-facing villas, both classic and modern in appearance, with superior qualities and exceptional materials.

Each villa has an elevated position that, together with its orientation, offers a beautiful view of both the sea and La Concha mountain.





# Living room









# Dining room









Kitchen





















# Master bedroom

















# Dressing room





# Master bathroom





# Terrace





# Bedroom













# Bathroom





# Solarium









# Bedroom













# Bathroom













# Garage







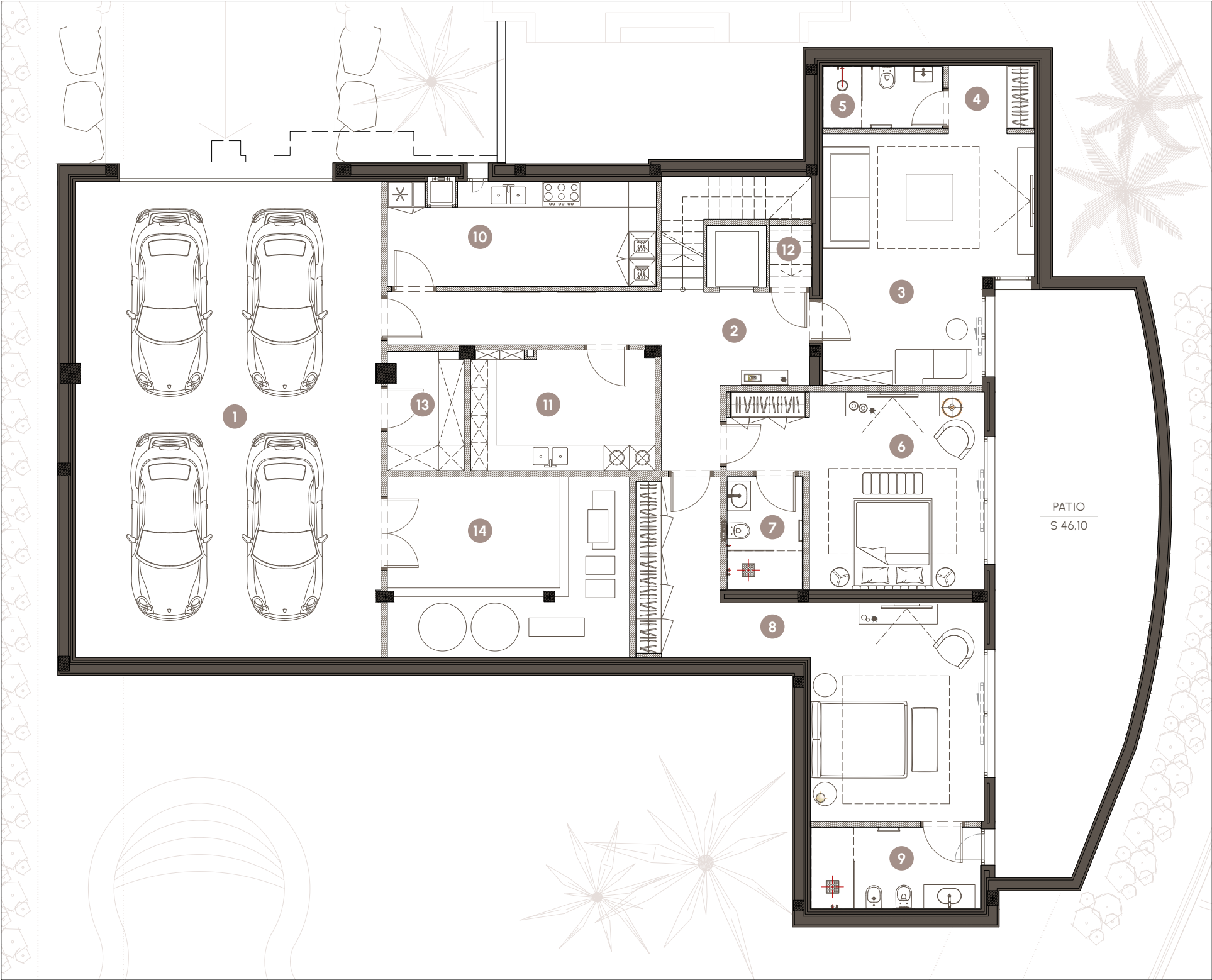


# DETACHED VILLAS

LOMAS DE MARBELLA CLUB

## BASEMENT FLOOR

NAME	BUILT
1 Garage	79.90 m <sup>2</sup>
2 Hall/Corridor 1	14.40 m <sup>2</sup>
3 Living room/Bedroom	26.30 m <sup>2</sup>
4 Vestibule 1	3.00 m <sup>2</sup>
5 WC 1	4.20 m <sup>2</sup>
6 Bedroom 1	22.60 m <sup>2</sup>
7 Bathroom 1	4.80 m <sup>2</sup>
8 Bedroom 2	31.90 m <sup>2</sup>
9 Bathroom 2	7.70 m <sup>2</sup>
10 Staff kitchen	15.00 m <sup>2</sup>
11 Laundry	12.20 m <sup>2</sup>
12 Closet	1.40 m <sup>2</sup>
13 Storage Room	5.00 m <sup>2</sup>
14 Technical Room	23.90 m <sup>2</sup>
BASEMENT FLOOR TOTAL AREA	252.30 m <sup>2</sup>
TOTAL AREA	540,60 m <sup>2</sup>



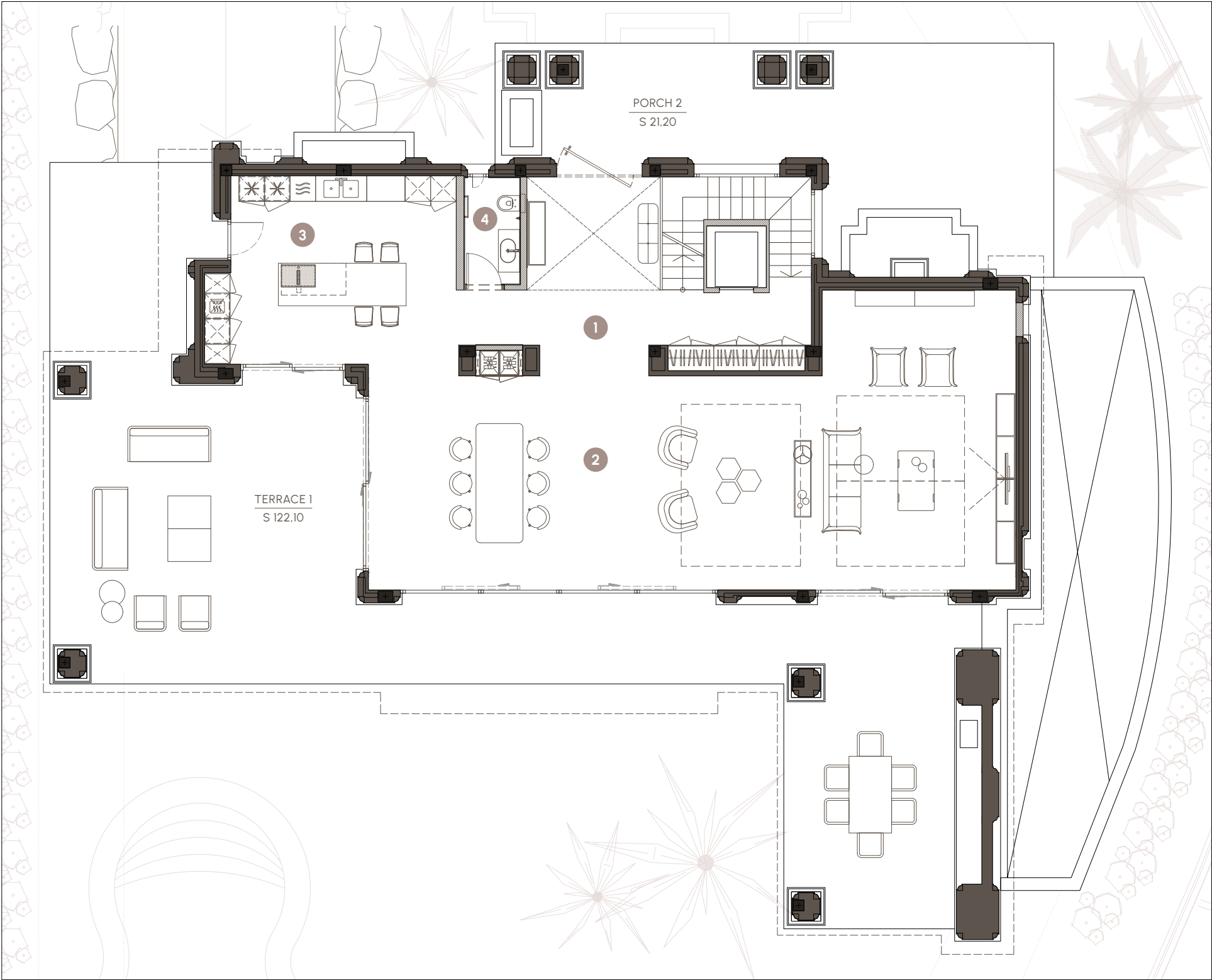


# DETACHED VILLAS

LOMAS DE MARBELLA CLUB

## GROUND FLOOR

NAME	BUILT
1 Hall/Corridor 1	22.20 m <sup>2</sup>
2 Living room	88.70 m <sup>2</sup>
3 Kitchen	24.30 m <sup>2</sup>
4 WC 2	3.40 m <sup>2</sup>
GROUND FLOOR TOTAL AREA	138.60 m <sup>2</sup>
TOTAL HOUSE AREA	540,60 m <sup>2</sup>



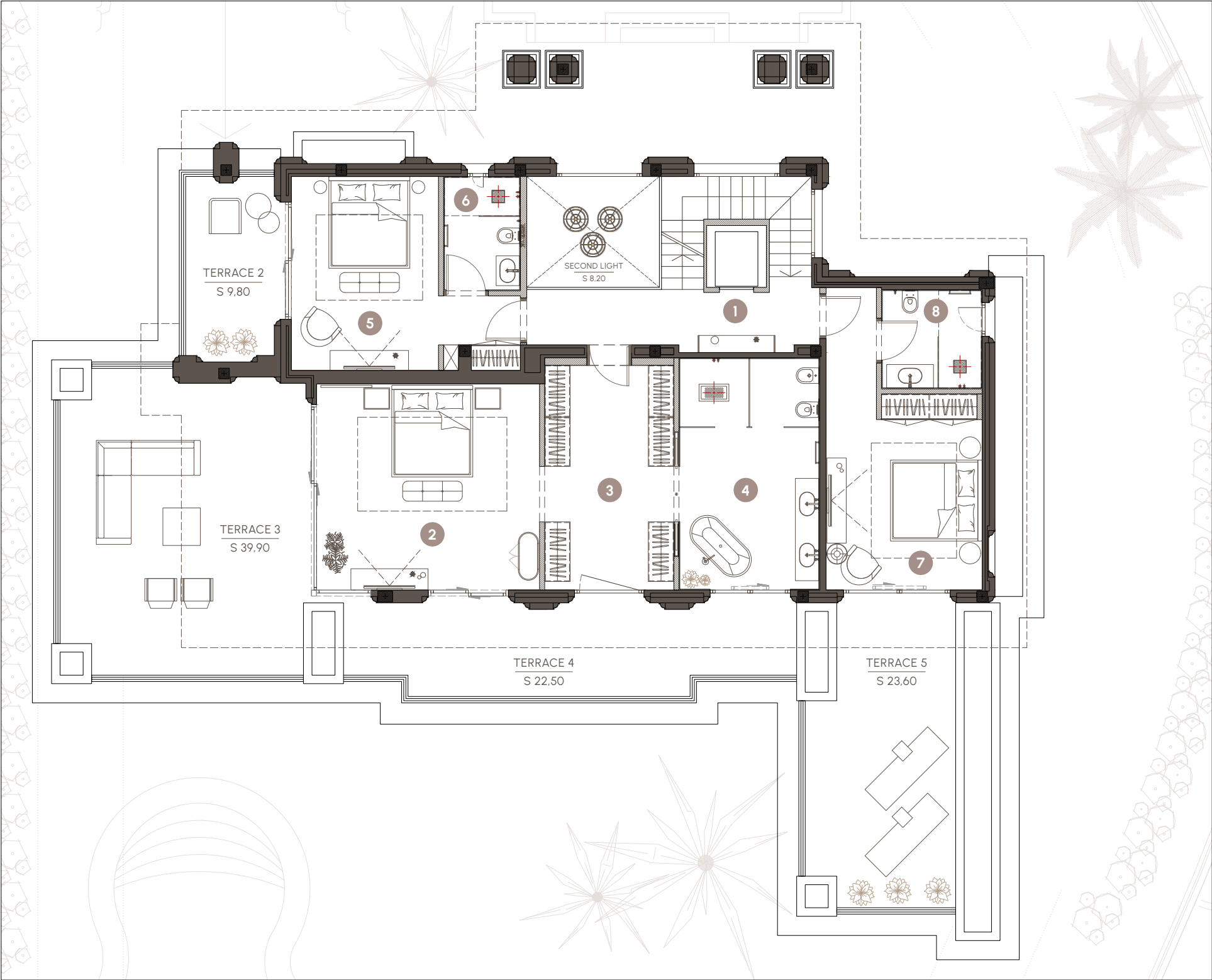


# DETACHED VILLAS

LOMAS DE MARBELLA CLUB

## FIRST FLOOR

NAME	BUILT
1 Hall/Corridor 3	8.90 m <sup>2</sup>
2 Master bedroom	31.50 m <sup>2</sup>
3 Dressing area	11.90 m <sup>2</sup>
4 Master bathroom	18.20 m <sup>2</sup>
5 Bedroom 3	18.20 m <sup>2</sup>
6 Bathroom 3	4.80 m <sup>2</sup>
7 Bedroom 4	19.60 m <sup>2</sup>
8 Bathroom 4	5.50 m <sup>2</sup>
FIRST FLOOR TOTAL AREA	118.60 m <sup>2</sup>
TOTAL HOUSE AREA	540,60 m <sup>2</sup>



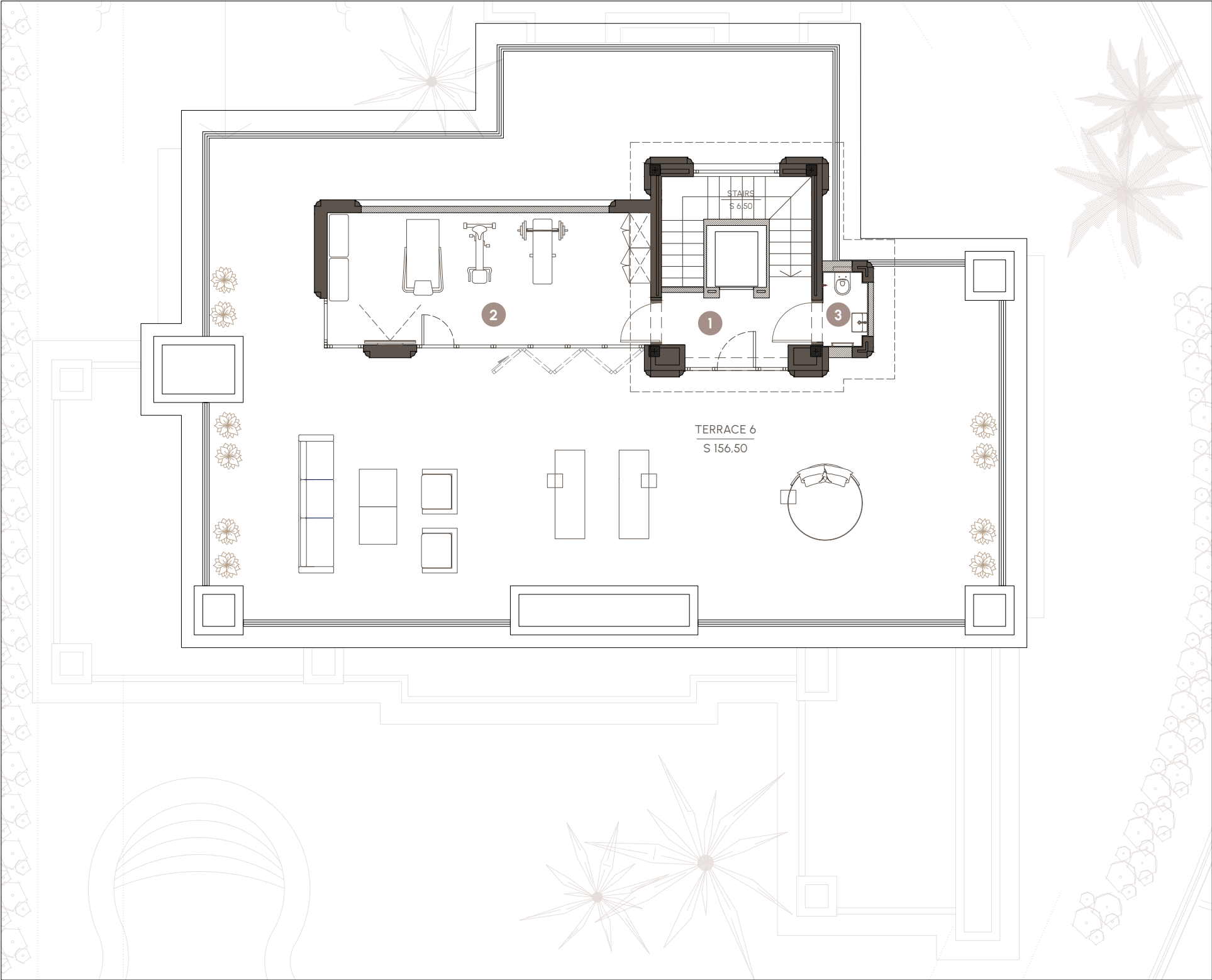


# DETACHED VILLAS

LOMAS DE MARBELLA CLUB

## ROOF TERRACE

NAME	BUILT
1 Vestibule	6.00 m <sup>2</sup>
2 GYM	23.50 m <sup>2</sup>
3 WC 3	1.80 m <sup>2</sup>
ROOF TERRACE TOTAL AREA	31.30 m <sup>2</sup>
TOTAL HOUSE AREA	540,60 m <sup>2</sup>





# DETACHED VILLAS

LOMAS DE MARBELLA CLUB