

Valentines House Ilford, IG1 2DG

Edward Chase is delighted to present to the residential lettings market this amazing 2-bedroom 2-bathroom luxury apartment in Valentines House, Ilford. This property is far larger than the normal apartments in this block making it a unique offer. This apartment is rented unfurnished, and we feel it would be an ideal choice for couples or families searching for size, location and convenience. This property has several key features such as: - All electric - Double glazed windows - Super large apartment - 2 spacious double bedrooms - Fitted wardrobes - 2 bathrooms (one en-suite) - Reception room - Open plan kitchen - White goods included - Ample storage - Blinds/curtains provided - Building concierge and security - Doorstep to Ilford Station (Elizabeth Line) - Unfurnished How to view this property: Please complete the online enquiry form by selecting 'email agent'. Once your full name, email and contact number is submitted to Edward Chase we shall register your

- Unique, Large 2 Bedroom 2 Bathroom Apartment in Valentines House
- Property Is Located On The Doorstep of Ilford Station. Great Access into Central London & Essex
- 2 Bathrooms Both Semi Tiled with Good Water
- Both Bedrooms Are Double Rooms
- Vibrant Multi Cultural Community with A Selection Of Schools & Amenities
- Building is All Electric with No Gas to Save on Energy Bills

Monthly Rental Of £1,799

Valentines House

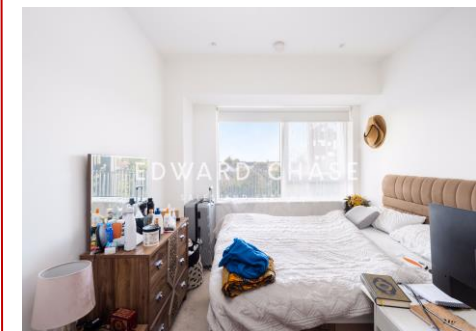
Ilford, IG1 2DG

Monthly Rental Of £1,799

Edward Chase is delighted to present to the residential lettings market this amazing 2-bedroom 2-bathroom luxury apartment in Valentines House, Ilford. This property is far larger than the normal apartments in this block making it a unique offer. This apartment is rented unfurnished, and we feel it would be an ideal choice for couples or families searching for size, location and convenience. This property has several key features such as: - All electric - Double glazed windows - Super large apartment - 2 spacious double bedrooms - Fitted wardrobes - 2 bathrooms (one en-suite) - Reception room - Open plan kitchen - White goods included - Ample storage - Blinds/curtains provided - Building concierge and security - Doorstep to Ilford Station (Elizabeth Line) - Unfurnished

How to view this property: Please complete the online enquiry form by selecting 'email agent'. Once your full name, email and contact number is submitted to Edward Chase we shall register your interest. When our lettings team have

finalised a viewing date and time, they shall email you notification of the viewing schedule and will offer you the opportunity to confirm the viewing. Lettings Edward Chase estate agents offer a bespoke, professional, ARLA accredited Lettings & Management service. If you would like a free property appraisal to gauge the rental potential of your property or you are considering a buy to let purchase, please feel free to contact Sukhbir Basra, Branch Manager to arrange an appointment. Edward Chase estate agents specialise in Ilford, Redbridge, Seven Kings, Goodmayes, Chadwell Heath, Newbury Park, Barkingside, Chadwell Heath, Barking, Canary Wharf, Docklands, Romford, Chigwell, Dagenham, Newham, Royal Wharf and the surrounding East London vicinity. Edward chase estates agents Lorimer Village, Goodmayes site. Our enthusiastic team of estate agents in Ilford are the local experts



| Score | Energy rating | Current | Potential |
|-------|---------------|---------|-----------|
| 92+ | A | | |
| 81-91 | B | 86 B | 86 B |
| 69-80 | C | | |
| 55-68 | D | | |
| 39-54 | E | | |
| 21-38 | F | | |
| 1-20 | G | | |

MONEY LAUNDERING REGULATIONS 2003

Intending purchasers will be asked to produce identification and proof of financial status when an offer is received. We would ask for your co-operation in order that there will be no delay in agreeing the sale.