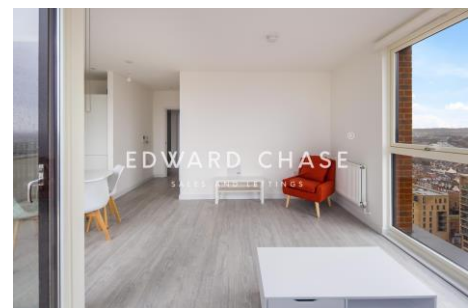




Rosefinch Apartments 7 Shearwater Drive London, NW9 7FW

Edward Chase is delighted to present to the residential lettings market this stylish high-specification apartment set on the 20th floor of Rosefinch Apartments on Shearwater Drive within the popular Hendon waterside development in North West London. Featuring luxury wooden floors, kitchen top, top of the range integrated kitchen appliances, and a state of the art furnishing. The property offers a spacious living /reception with dining area; open plan to a fitted kitchen, leading to a large private balcony overlooking some amazing panoramic views of the city, two double bedrooms, and two modern three-piece bathroom. Further benefits of this well presented home are a utility cupboard, secure parking for one car. Situated in the sought after Hendon Waterside development, residents of the apartment will enjoy communal landscaped gardens and views of the stunning reservoir. Hendon Waterside development has excellent transport links as it is set within Zone 3 and is



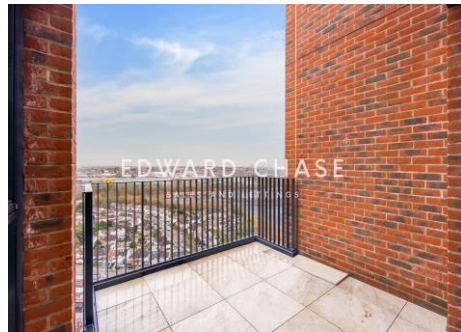
- Stylish Two Bedroom Two Bathroom Apartment fully furnished to a very high standard
- Locate on 20th Floor with great views & Large Private Terrace
- Residents' Gym
- One parking space included
- 12 Hour Concierge Service
- Amazing panoramic view of the Reservoir
- 5 minute walk to Hendon Station and close to Hendon central station

Monthly Rental Of £1,999

Rosefinch Apartments 7 Shearwater Drive
London, NW9 7FW

Monthly Rental Of £1,999

Edward Chase is delighted to present to the residential lettings market this stylish high-specification apartment set on the 20th floor of Rosefinch Apartments on Shearwater Drive within the popular Hendon waterside development in North West London. Featuring luxury wooden floors, kitchen top, top of the range integrated kitchen appliances, and a state of the art furnishing. The property offers a spacious living /reception with dining area; open plan to a fitted kitchen, leading to a large private balcony overlooking some amazing panoramic views of the city, two double bedrooms, and two modern three-piece bathroom. Further benefits of this well presented home are a utility cupboard, secure parking for one car. Situated in the sought after Hendon Waterside development, residents of the apartment will enjoy communal landscaped gardens and views of the stunning reservoir. Hendon Waterside development has excellent transport links as it is set within Zone 3 and is within walking distance of Hendon Central Tube station and 5 minute walking distance to Hendon Station. Reach central London in under 20 minutes via Thameslink or Northern Line services. Various shops and restaurants are nearby. Please contact Edward Chase to view an apartment. How to view this property: Please complete the online enquiry form by selecting 'email agent'. Once your full name, email and contact number is submitted to Edward Chase we shall register your interest. When our lettings team have finalised a viewing date and time, they shall email you notification of the viewing schedule and will offer you the opportunity to confirm the viewing. Lettings. Edward Chase estate agents offer a bespoke, professional, ARLA accredited Lettings & Management service. If you would like a free property appraisal to gauge the rental potential of your property or you are considering a buy to let purchase, please feel free to contact Sukhbir Basra,



Harp View Apartments
2 bedroom apartment



Score	Energy rating	Current	Potential
92+	A		
81-91	B	83 B	83 B
69-80	C		
55-68	D		
39-54	E		
21-38	F		
1-20	G		

MONEY LAUNDERING REGULATIONS 2003

Intending purchasers will be asked to produce identification and proof of financial status when an offer is received. We would ask for your co-operation in order that there will be no delay in agreeing the sale.