



EH

EXQUISITE
HOME



CHARMING TOWN HOUSE ON LITTLE ST. MARY'S LANE

Set within the Historic Core Conservation Area, this enchanting town house on Little St. Mary's Lane is one of the few remaining freehold properties in the centre of Cambridge.

The lane runs from Pembroke College Chapel, designed by Sir Christopher Wren, down to the River Cam. Its rich history is intertwined with the remarkable lives of respected individuals who lived here, including Stephen Hawking and wartime hero Constance Babington Smith.

Number 3 looks over the picturesque garden of Little St. Mary's Church, a recognised City Wildlife site and a peaceful, shady retreat, just steps away from the Market Square, colleges and the Backs. With its rich heritage and proximity to the bustling heart of the city, this town house is a rare gem that captures the essence of Cambridge's timeless charm.

PROPERTY DETAILS:

This delightful town house is on three floors with a pretty courtyard and a roof garden with views over Pembroke College. The rooms are light and airy.

Ground Floor

Sitting room: A warm and inviting space with an open fire and library alcove, perfect for cozy evenings.

Dining room: Leading off the sitting room with French windows onto the private courtyard.

Galley kitchen: A fitted kitchen with Corian worktops and integrated appliances, including a mini-dishwasher, electric oven, a ceramic hob and a washing machine.

First Floor

Bedroom 1: A spacious double room with fitted cupboards and an open fire, overlooking the church garden towards Peterhouse.

Bathroom and dressing room.

Second Floor

Bedroom 2: This large double bedroom features a built-in cupboard and a private roof garden, perfect for sitting outside.

COMMUNITY AND AMENITIES:

Little St. Mary's Lane is at the heart of Cambridge, with history at your doorstep. Within a short, pleasant walk, you can take a punt to explore the river Cam and the world-famous Backs and the colleges. The Fitzwilliam Museum and the beautiful Botanic Gardens are close by. The area offers a delightful array of shopping and cultural amenities, with a splendid selection of coffee shops, restaurants and bars.

CULTURAL LIFE:

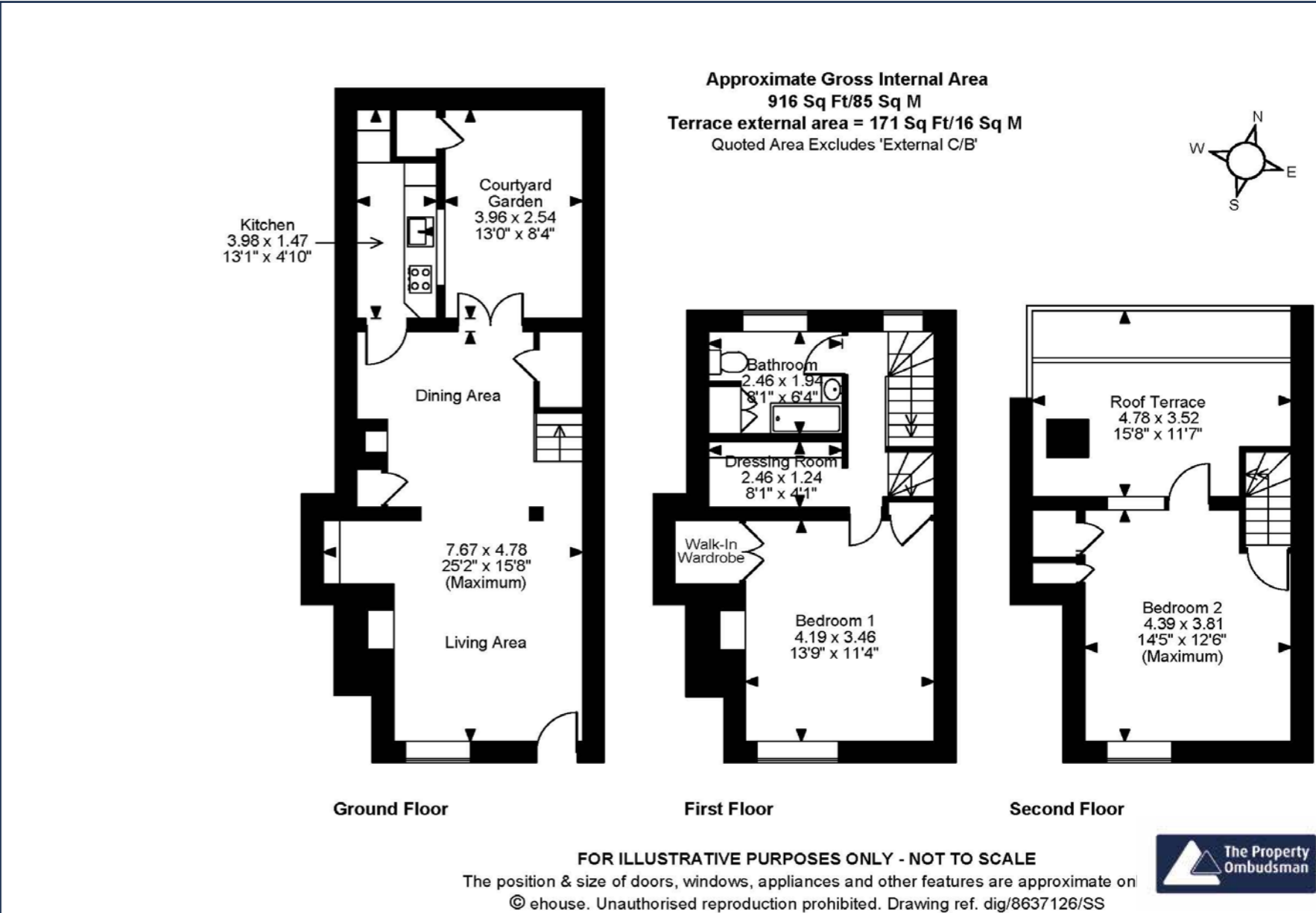
Stephen Hawking, the world-renowned theoretical physicist, lived in Little St Mary's Lane as did Constance Babington Smith, a wartime pioneer in photographic reconnaissance.

In less than five minutes you can walk to The Eagle pub, where Francis Crick and James Watson announced their discovery of DNA, to the spectacular Kings College Chapel, or to the Arts Theatre. Or you can stroll through meadows along the river to Grantchester.

CONCLUSION:

This town house on Little St. Mary's Lane is not merely a property; it is a gateway to a unique way of life steeped in history, culture, and natural beauty. Whether you seek a personal residence or a rewarding investment opportunity, this home promises an extraordinary living experience in one of the UK's most iconic cities.





All measurements are approximate and quoted in imperial with metric equivalents and for general guidance only whilst every attempt has been made to ensure accuracy, they must not be relied on. The fixtures, fittings and appliances referred to have not been tested and therefore no guarantee can be given that they are in working order. Internal photographs are reproduced for general information and must not be inferred that any item shown is included with the property. These comments are the personal views of the current owner and are included as an insight into life at the property. They have not been independently verified and should not be relied on without verification and do not necessarily reflect the views of the agent. Registered in England and Wales, Company Reg No.10931078 Exquisite House, Alton Business Centre, Wherstead, Ipswich, Suffolk, United Kingdom, IP9 2AX.



EXQUISITE HOME

Exquisite Home, St John's Innovation Centre, Cowley Road, Cambridge, CB4 0WS

T +44(0) 1223 261144 E info@exquisitehome.co.uk

CAMBRIDGESHIRE | ESSEX | HERTFORDSHIRE | HUNTINGDONSHIRE | NORFOLK | SUFFOLK | LONDON