



21 Beatrice Avenue, Manchester, M18 7JU

£1,000

- Three Bedrooms
- Great Transport Links
- Local Park
- EPC: D
- Two Reception Rooms
- Lots of Local Amenities
- Deposit: £1,153
- Council Tax Band: A

21 Beatrice Avenue, Manchester M18 7JU

Nestled on the charming Beatrice Avenue in Gorton, this mid-terrace house offers a perfect blend of comfort and convenience. With a generous living space of 893 square feet, this three-bedroom property is ideal for families or professionals seeking a welcoming home.

Upon entering, you are greeted by two spacious reception rooms, providing ample space for you to relax. The modern kitchen is well-equipped, making meal preparation a pleasure. The three bedrooms are thoughtfully designed, ensuring a restful retreat at the end of the day. The property also features a well-appointed bathroom, catering to all your daily needs.

Built in 1900, this home retains a sense of character while offering the modern amenities required for contemporary living. Its location boasts excellent transport links, making commuting a breeze. Families will appreciate the proximity to a variety of schools, ensuring quality education options for children. Additionally, the nearby Debdale Park offers a lovely green space for outdoor activities and leisurely strolls.

This property is available for immediate occupancy, making it an excellent opportunity for those looking to settle in the Gorton community. This property is one not to be missed, so please call Kingsdale Estates on 0161 560 2915. Come and experience the warmth and convenience this home has to offer.



Council Tax Band: A



Hall Way

Reception Room One

9'6" x 11'1"

Reception Room Two

10'2" x 14'1"

Kitchen

7'6" x 9'2"

Bedroom One

8'2" x 13'1"

Bedroom Two

6'10" x 11'1"

Bedroom Three

5'8" x 8'0"

Bathroom

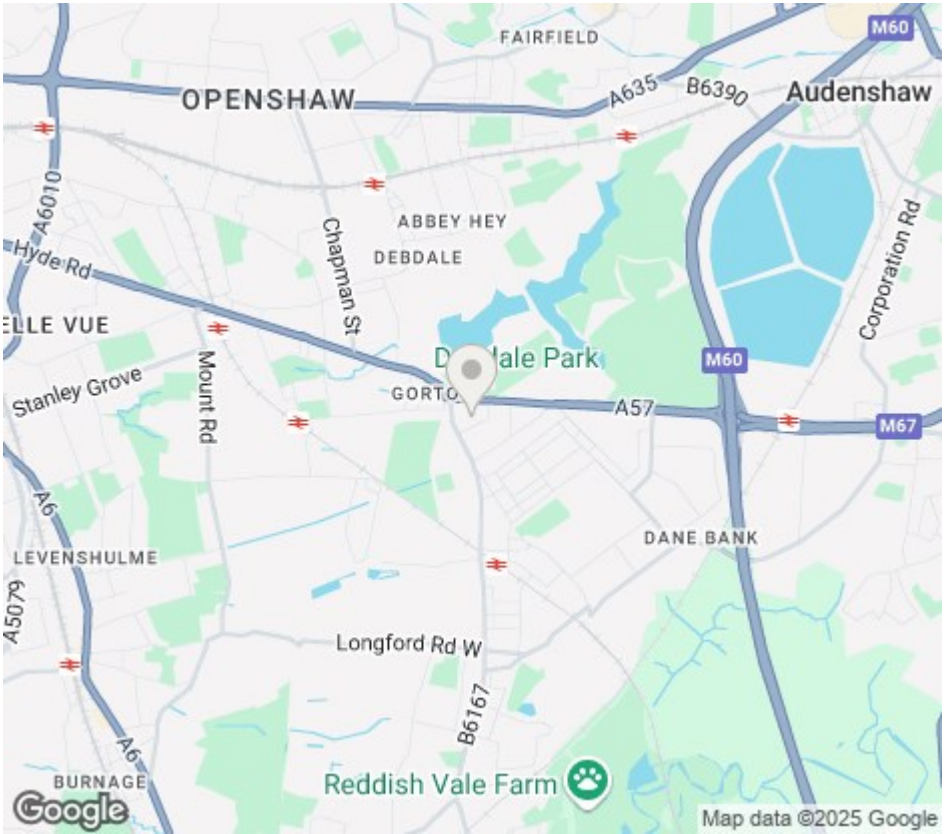
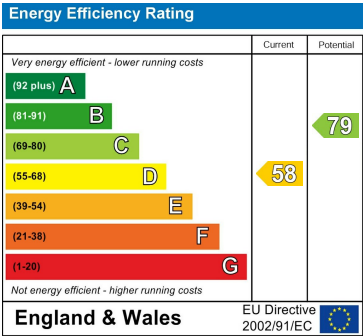
7'10" x 9'2"

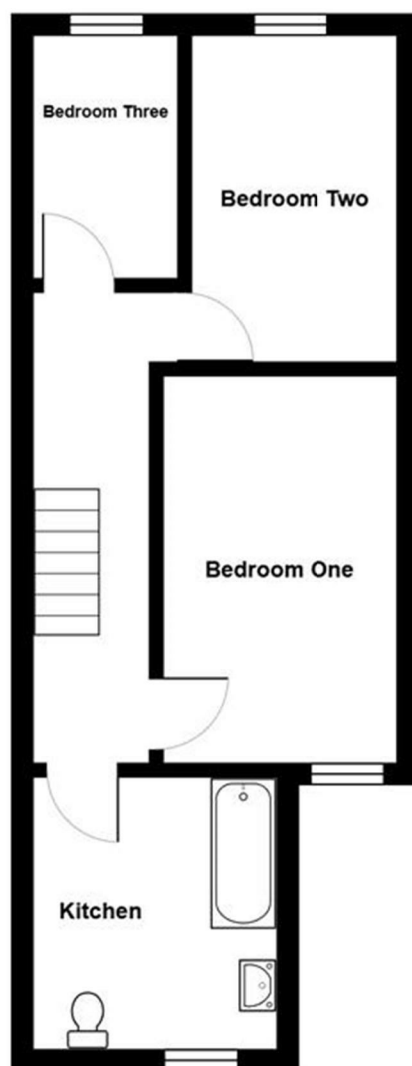
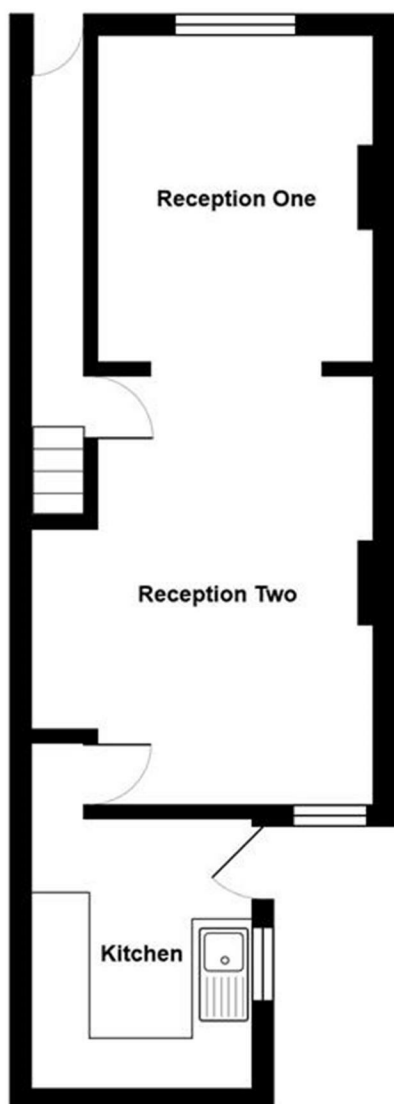
Anti Money Laundering

MONEY LAUNDERING If you are thinking of Buying, Selling, Renting or Investing in Property, please note, that it is our obligation to comply with the following Acts of Parliament: 1) The Money Laundering Regulations Act 2003 2) The Proceeds of Crime Act 2002 3) Terrorism Act 2000 (as amended by the anti-terrorism Crime and Security Act 2001)

Disclaimer

Kingsdale Estates have received confirmation from the Landlord or Seller that all information within the particulars are correct. In the event of the property being a leasehold, Kingsdale Estates would have requested all relevant information in advance. Although we believe all material in the marketing to be correct, we would advise interested parties to satisfy any quires prior to reaching a legal agreement.





Total Area: 73.4 m² ... 791 ft²

All measurements are approximate and for display purposes only