




JAMES CARLON



@james@jamescarlonestates.co.uk

 jamescarlon.exp.uk.com

 01952 370 090

Dudmaston, Telford, TF3 2DE

Offers In Region Of £190,000

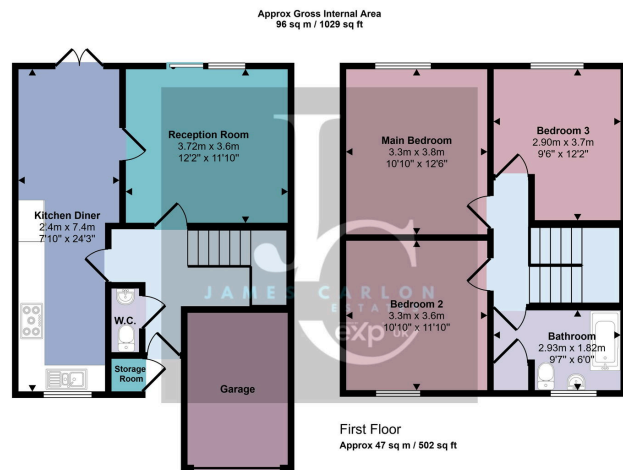
3 1 1



- Spacious mid terrace family home
- Entrance hall
- Guest cloak room
- Dining kitchen
- Living room
- 3 double bedrooms
- Bathroom with shower over bath
- Garden
- Garage & driveway
- No upward chain



This well presented mid terrace family home provides spacious and well planned accommodation throughout. The layout includes an entrance hall with guest cloakroom, a generous dining kitchen fitted with a range of units and integrated appliances including a four ring gas hob, electric oven and grill, with French doors opening onto the rear garden. There is also a comfortable living room. Upstairs are three double bedrooms, all of good proportions, together with a family bathroom fitted with a white suite and shower over the bath. Outside, a driveway provides parking for two vehicles and access to the single integral garage. The rear garden features a timber decked seating area, a gravelled section and a useful brick built store, all enclosed by close board fencing with gated rear access.



Ground Floor
Approx 49 sq m / 527 sq ft

This floorplan is only for illustrative purposes and is not to scale. Measurements of rooms, doors, windows, and any items are approximate and no responsibility is taken for any error, omission or mis-statement. Icons of items such as bathroom suites are representations only and may not look like the real items. Made with Made Snappy 360.

