



SPACIOUS 3 BEDROOM MAISONETTE IN SHOREDITCH

BUCKLAND COURT, N1 6TY

£500,000 Leasehold (120 years remaining)

Key Points:

- Open plan kitchen/living area
- Maisonette
- Fantastic central location
- Over 790 square feet

About this property:

Situated in the heart of Shoreditch, this well-presented three-bedroom maisonette offers over 790 sq. ft. of living space, making it a fantastic opportunity for homeowners and investors alike. The property features a bright reception area, a modern kitchen, a family bathroom, and an additional WC for convenience. The three well-proportioned bedrooms provide ample space for families or professionals, while the communal gardens offer a peaceful retreat within this bustling neighborhood.

Located in a secure block, this home benefits from excellent transport links, with Shoreditch High Street, Liverpool Street, and Old Street stations all within easy reach. The area's vibrant mix of bars, restaurants, and creative spaces adds to the appeal of this sought-after location. With strong rental potential and long-term growth prospects, this property is a great investment opportunity in one of London's most dynamic districts.



Further Information:

Tenure: Leasehold (120 years years remaining)

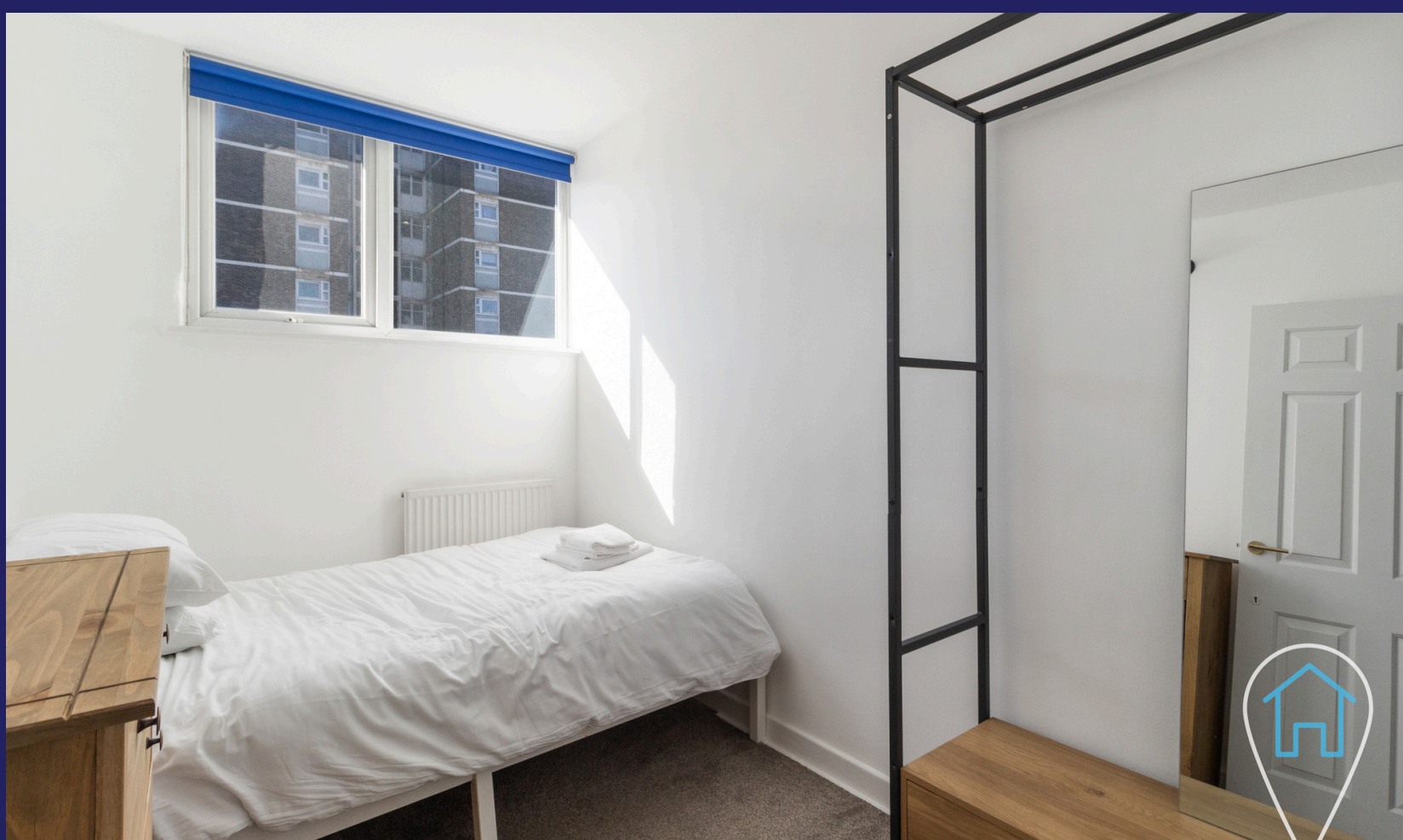
Local Authority: London Borough of Hackney

Energy Performance Rating: C

Council Tax Band: B

Ground Rent: £0.00

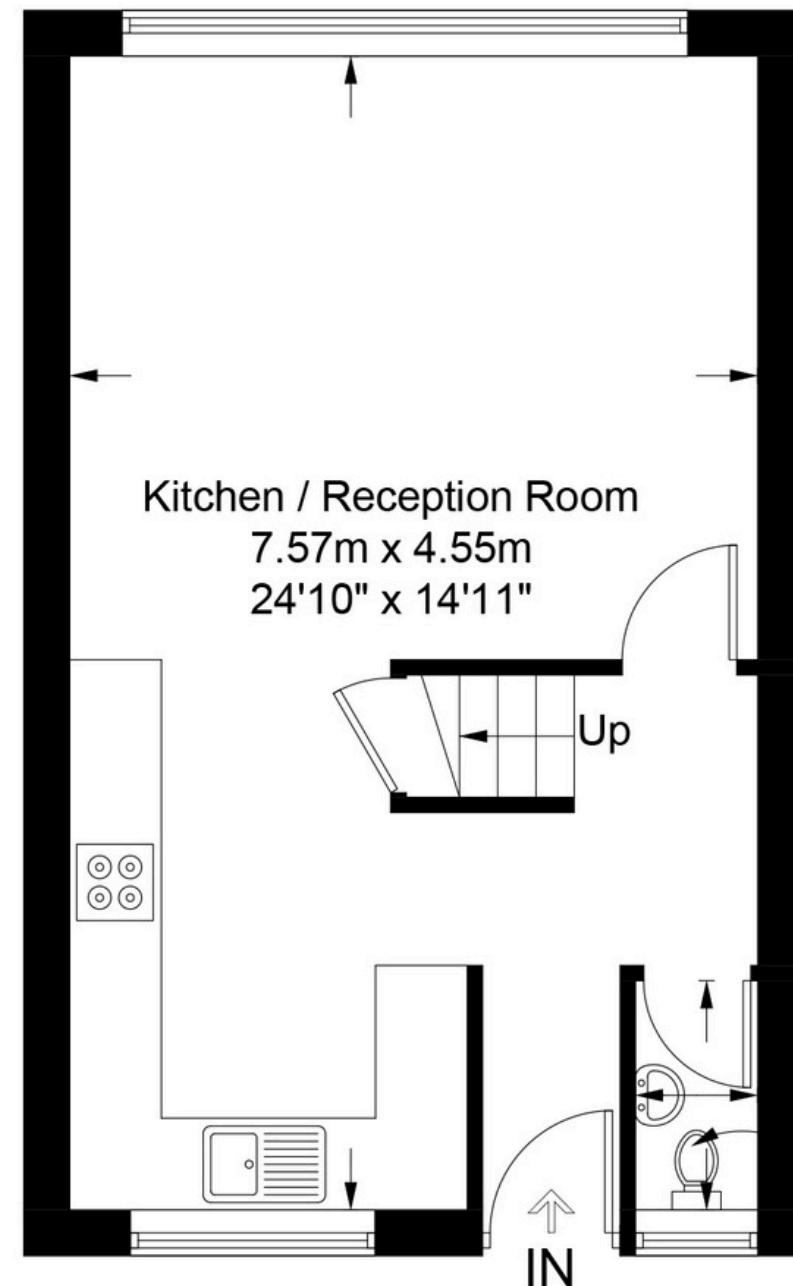
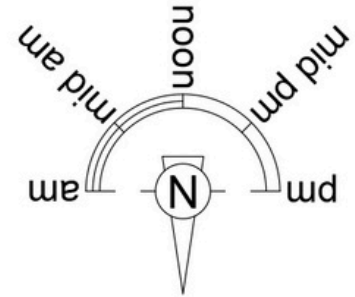
Service Charge: £1,680



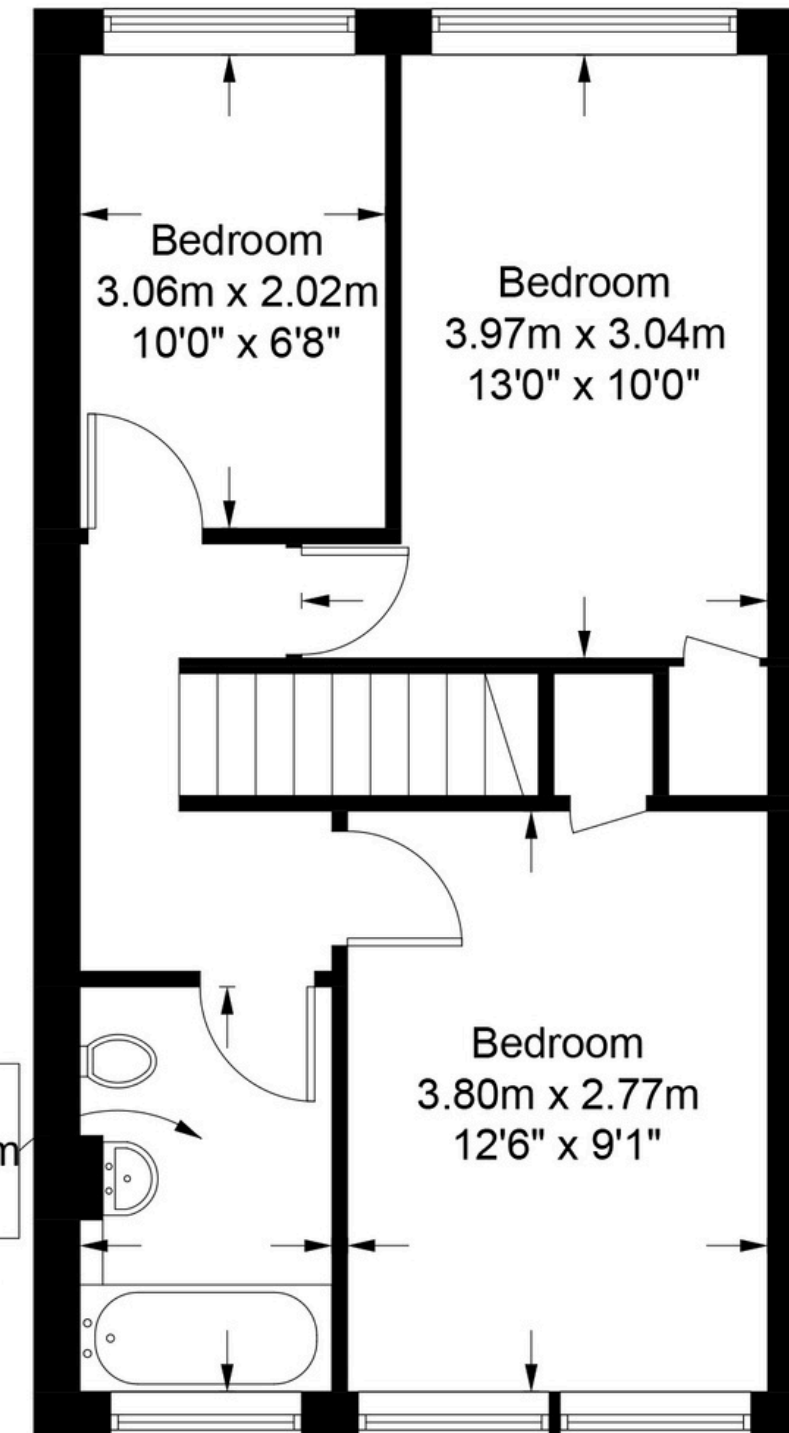
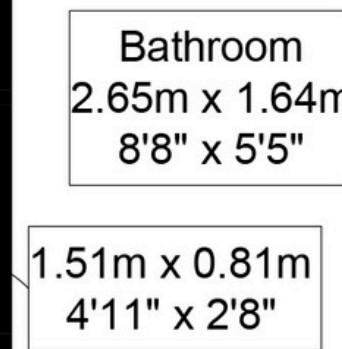
Floorplan

Buckland Court, N1

Approximate Gross Internal Area = 791 sq ft / 73.5 sq m



Second Floor



Third Floor



AIR BLUE LETS

Contact us

EMAIL: INFO@AIRBLUELETS.CO.UK

TELEPHONE: 0203 4577 888

WEBSITE: WWW.AIRBLUELETS.CO.UK