



**WELL PRESENTED 2 BEDROOM/1 BATHROOM FLAT**

**SAFFRON COURT, 2A MARYLAND PARK, E15 1HU**

**£350,000 - Share freehold (990 years remaining)**

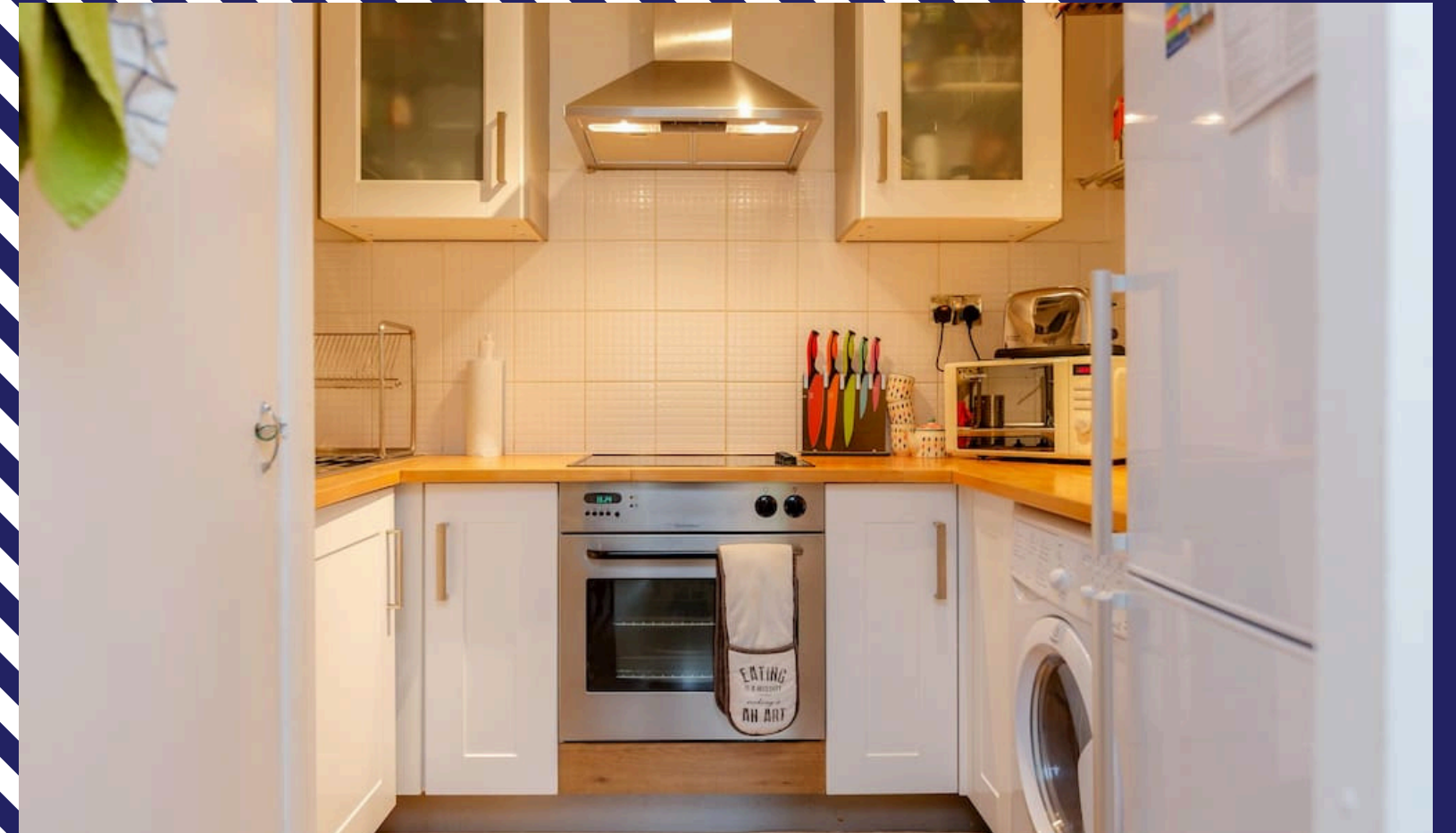
## Key Points:

- Share of Freehold
- Gated Parking for Residents
- Communal Garden
- Long Lease (990 years)

## About this property:

Nestled in the sought-after Stratford area, this beautifully presented two-bedroom apartment offers a perfect blend of modern living and convenience. Featuring a bright and airy open-plan kitchen/living area, two well-proportioned double bedrooms, and high-quality finishes throughout, this home is ready to move into right away.

The property benefits from a share of the freehold and a long 990-year lease, providing long-term security and investment appeal. Residents can enjoy access to a well-maintained communal garden, ideal for relaxing outdoors, along with the added convenience of private gated residents' parking, with one allocated space included. Looking for a stylish and well-connected home in a desirable location. Early viewings are highly recommended!



## Further information:

Tenure: Share Freehold (990 years years remaining)

Local Authority: London Borough of Newham

Council Tax Band: B

Ground Rent: £0.00

Service Charge: £166.14

Energy Performance Rating: C

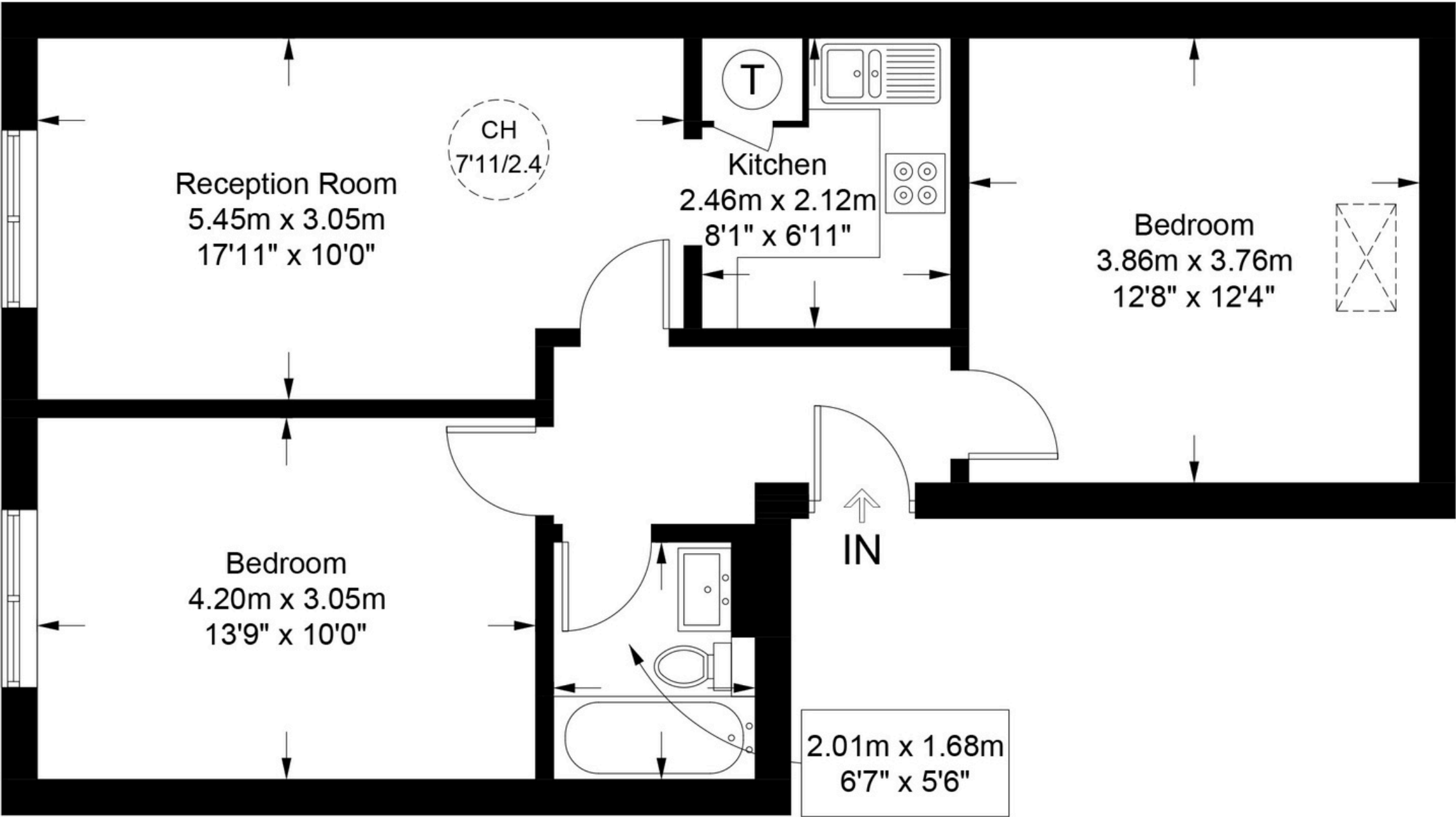
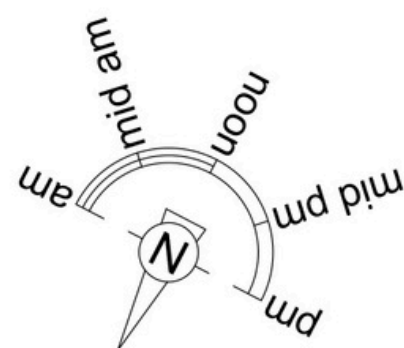






Saffron Court, E15

Approximate Gross Internal Area = 634 sq ft / 58.9 sq m



Third Floor



AIR BLUE LETS

Contact us

EMAIL: [INFO@AIRBLUELETS.CO.UK](mailto:INFO@AIRBLUELETS.CO.UK)

TELEPHONE: 0203 4577 888

WEBSITE: [WWW.AIRBLUELETS.CO.UK](http://WWW.AIRBLUELETS.CO.UK)