



EXQUISITE 2 BEDROOM/2.5 BATHROOM HATTON WALL FLAT

HATTON WALL, EC1N 8JJ

£1,250,000 Share freehold (241 years remaining)

Key Points:

- Open plan kitchen/living area
- Lift access
- Fantastic location
- High ceilings & spacious proportions

About this property:

This modern 2-bed, 2.5 bath flat offers spacious, stylish living in the heart of London's historic Hatton Garden. Enjoy a bright open-plan layout, fully equipped kitchen with dishwasher, and two generously sized bedrooms, each with its own en-suite bathroom. This property is ideally located with lift access, near transport links, and endless dining and shopping options.

Perfect for couples or professionals, with easy access to transport and endless amenities just steps away



Further Information:

Tenure: Share Freehold (241 years years remaining

Local Authority: London Borough of Camden

Energy Performance Rating: B

Council Tax Band: E

Ground Rent: TBC

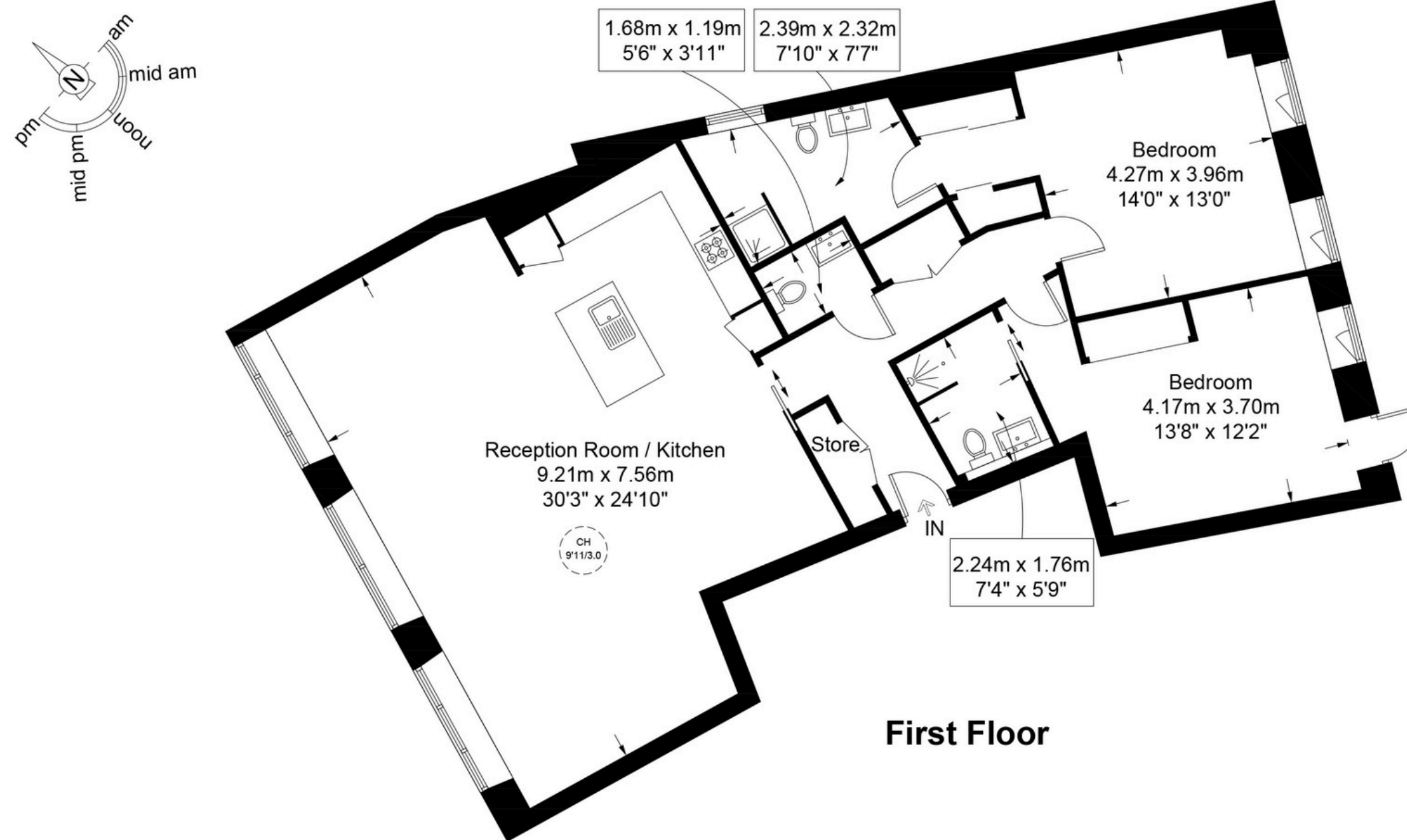
Service Charge: £3,817 (half yearly)



Floorplan

Hatton Wall, EC1N

Approximate Gross Internal Area = 1368 sq ft / 127.1 sq m



First Floor



This plan is for layout guidance only and is not drawn to scale unless stated. All dimensions, including windows, doors, and the Total Gross Internal Area (GIA), are approximate. For precise measurements, please consult a qualified architect or surveyor before making any decisions based on this plan.



Certified
Property
Measurer



AIR BLUE LETS

Contact us

EMAIL: INFO@AIRBLUELETS.CO.UK

TELEPHONE: 0203 4577 888

WEBSITE: WWW.AIRBLUELETS.CO.UK