



STUNNING 2 BEDROOM FENWICK ROAD FLAT

Fenwick Road, SE15 4HS

£600,000 SHARE FREEHOLD (978 YEARS REMAINING)

- Private garden
- Central heating
- Double glazing
- Contemporary design

About this property:

This charming two-bedroom garden property in Peckham boasts a modern open-plan kitchen, bathed in natural light through large clear panes, with sleek cabinetry and a built-in wine fridge.

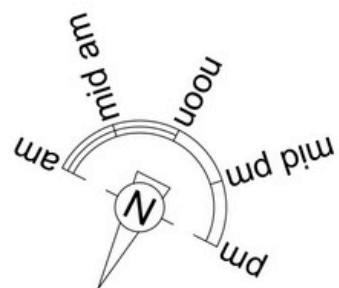
The spacious master bedroom features ample storage with built-in closets and cabinets, while the bathroom offers a contemporary feel with white tiles and silver accents.

Located just moments from Peckham Rye Station, this home is surrounded by vibrant shops, cafes, and the peaceful Peckham Rye Park, making it an ideal spot for enjoying the best of South East London.

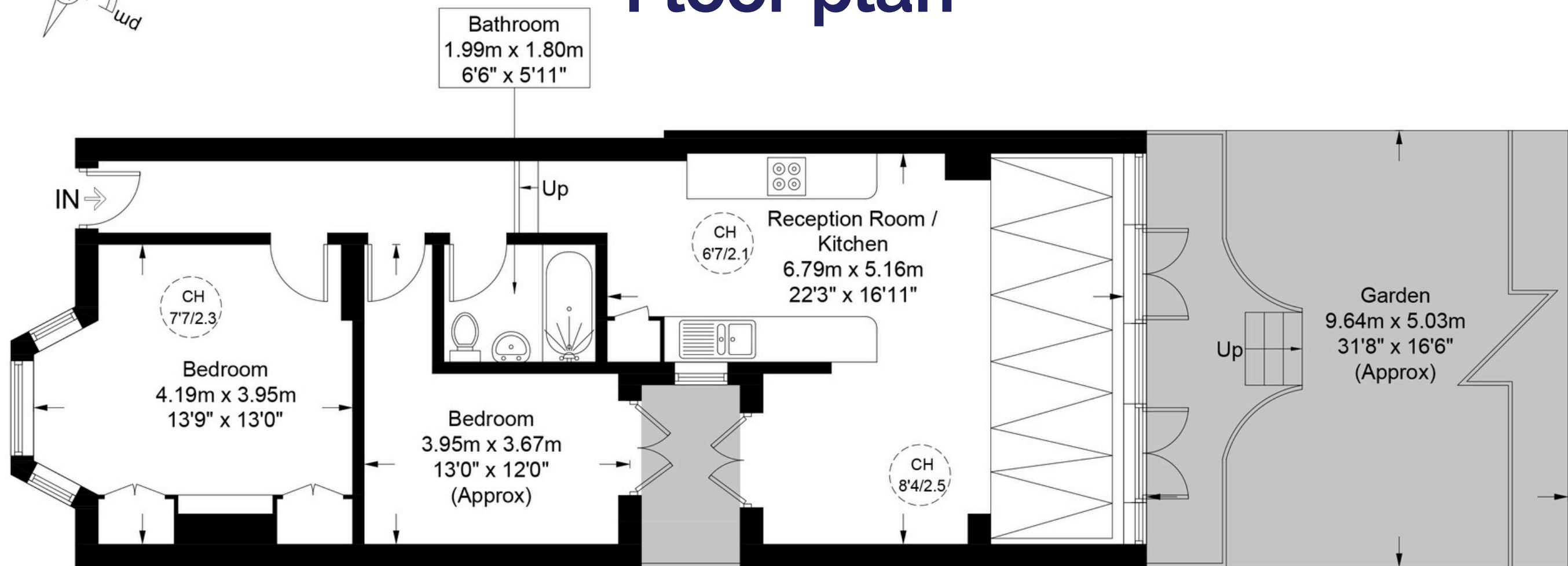


Tenure
Share Freehold (980 years remaining)
Local Authority
London Borough of Southwark
Council Tax
Band = E
Ground Rent
TBD
Service Charge
TBC





Floor plan



Lower Ground Floor



This plan is for layout guidance only and is not drawn to scale unless stated. All dimensions, including windows, doors, and the Total Gross Internal Area (GIA), are approximate. For precise measurements, please consult a qualified architect or surveyor before making any decisions based on this plan.



Certified
Property
Measurer



AIR BLUE LETS

Contact us

EMAIL: INFO@AIRBLUELETS.CO.UK

TELEPHONE: 0203 4577 888

WEBSITE: WWW.AIRBLUELETS.CO.UK