



1 Bed  
Flat - Purpose  
Built  
located  
in Hoole, Chester

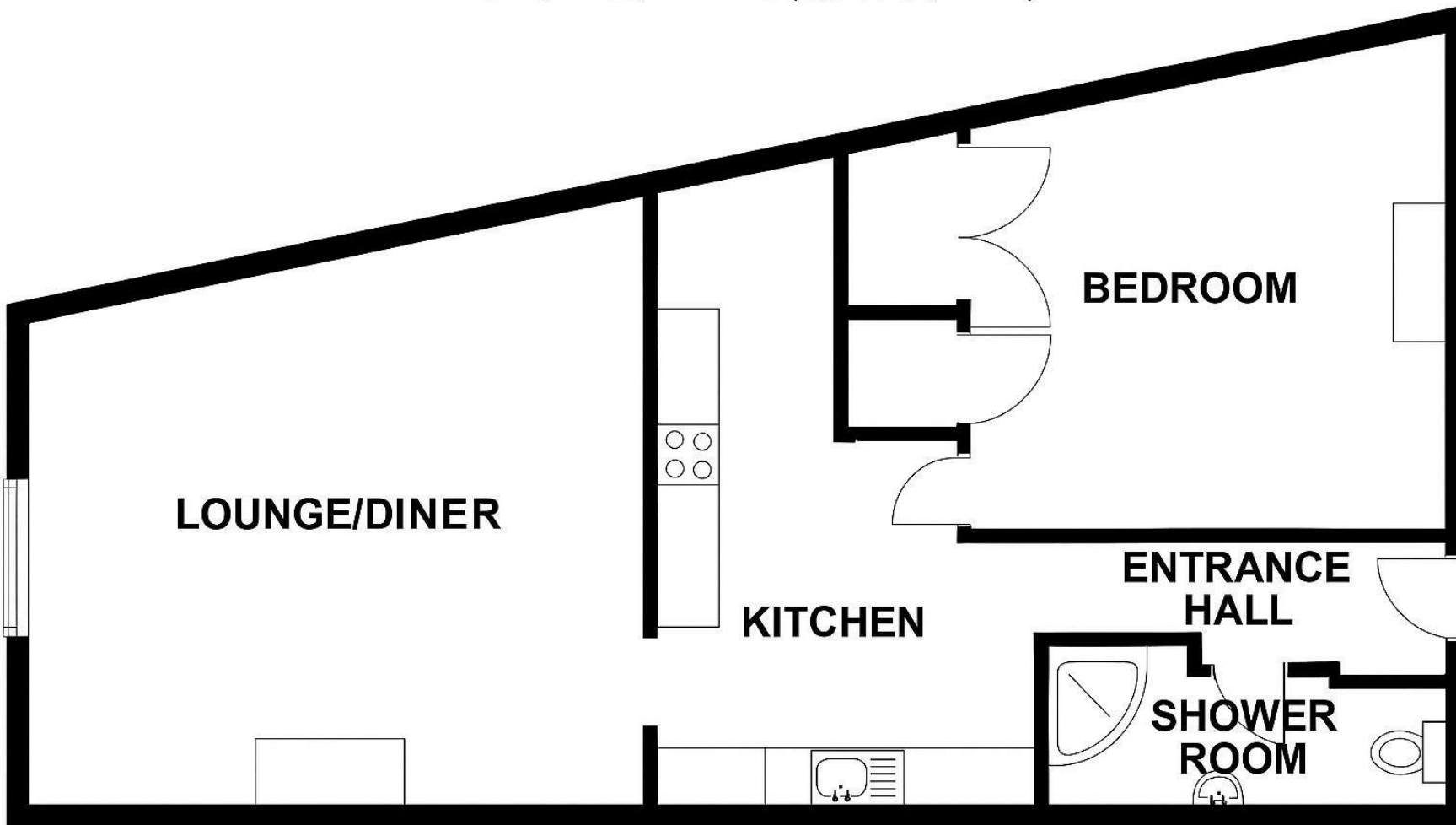
£1,000 Per month



**MaddoxNoel**  
ESTATE & LETTINGS AGENTS

# FIRST FLOOR

APPROX. 61.1 SQ. METRES (658.00 SQ. FEET)



## DIRECTIONS

Just 0.4 miles from Chester Railway Station, with local bus stops less than 0.1 miles away. The M53 motorway is only 1.5 miles by car, giving fast access to the wider road network, connecting quickly to the M56 and M6.

## CONTACT

Colony One  
Suite 1.24 1 Silk Street  
Ancoats  
Manchester

E: [hello@maddoxnoel.com](mailto:hello@maddoxnoel.com)  
T: 0161 543 3406  
[www.maddoxnoel.com](http://www.maddoxnoel.com)

Disclaimer: Please note this floor plan is for marketing purposes and is to be used as a guide only. All efforts

Energy Efficiency Rating		
	Current	Potential
Very energy efficient - lower running costs		
(92 plus) A		
(81-91) B		
(69-80) C		78
(55-68) D	60	
(39-54) E		
(21-38) F		
(1-20) G		
Not energy efficient - higher running costs		
EU Directive 2002/91/EC		
England & Wales		

**MaddoxNoel**  
ESTATE & LETTINGS AGENTS