

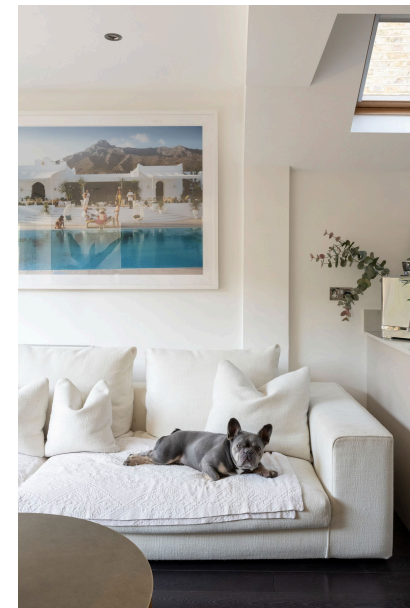


Williams.
London

Althea Street, Fulham

Guide Price £950,000

🛏 2 🚿 1 🚗 1



Situated on a sought-after street in Fulham, this beautifully renovated two-bedroom garden apartment offers a seamless blend of period charm and contemporary elegance. A west-facing private garden provides a peaceful retreat, perfect for outdoor entertaining.

An uplifting open-plan living space is bathed in natural light, with a shaker-style kitchen featuring a Belfast sink, integrated appliances, and stylish cabinetry. The dining and reception area flow effortlessly, framed by bifolding doors that open onto the garden.

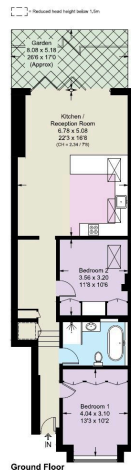
The principal bedroom is generously proportioned, offering bespoke storage and a calming atmosphere. A second double bedroom, ideal as a guest room, nursery or home office, is equally well-appointed. A sleek, contemporary bathroom serves both bedrooms, designed with understated luxury in mind.

Perfectly positioned near Fulham Broadway and Parsons Green, this exceptional apartment is moments from boutique shops, cafés, and excellent transport links, offering stylish interiors, a private garden, and an enviable Fulham address.



Althea Street, SW6

Approximate Area = 863 sq ft / 80.2 sq m
Including Limited Use Area (10 sq ft / 0.9 sq m)



Ground Floor
This plan is for layout guidance only. Not drawn to scale unless stated. Windows and door openings are approximate. Whilst every care is taken in the preparation of this plan, please check all dimensions, shapes and compass bearings before making any decisions reliant upon them. (D1181878)

- Stunning two bedroom garden flat
- Chain free
- Share of Freehold
- Private garden



Williams.
London

9 Pembridge Road
London
W11 3JY
United Kingdom



M: +44 7432 319064
T: +44 20 4591 1402
E: will@williams london.co.uk