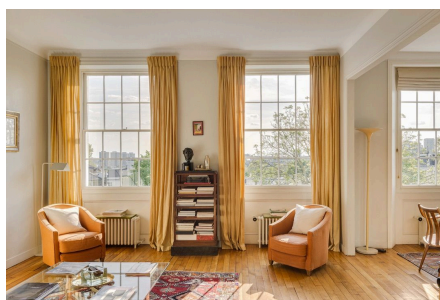


Ladbroke Grove, W11

Offers Over £1,250,000

🛏 1 🚿 2 🛋 1



Beautifully renovated one-bedroom apartment with bespoke finishes, reclaimed wood floors, and far-reaching West London views. Includes communal garden access, off street parking, and a share of freehold.

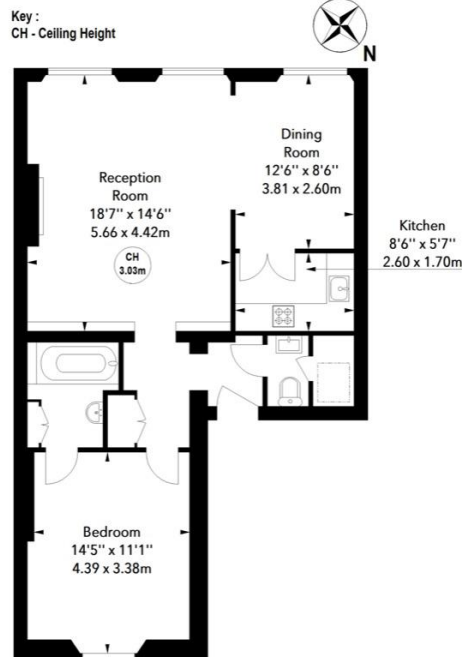


Key Features

- Communal Garden Access
- Off street parking
- Bespoke finishes
- West facing
- Heart of Notting Hill
- Share of Freehold
-
-

Ladbroke Grove, W11

Approximate Area = 71.0 sq m / 764 sq ft



Third Floor

Illustration For Identification Purposes Only.
All measurements and areas are approximate, not to scale.

