



**NEIL ROBINSON**  
Estate Agents

**Darfield, Upholland, WN8 0AT**

**£140,000**

3 1 2



**Skelmersdale Office**  
**01695 355110**

108 The Concourse  
Skelmersdale  
WN8 6LJ

**Ashton-in-Makerfield Office**  
**01942 466221**

405 Wigan Road  
Ashton-in-Makerfield  
WN4 0AR



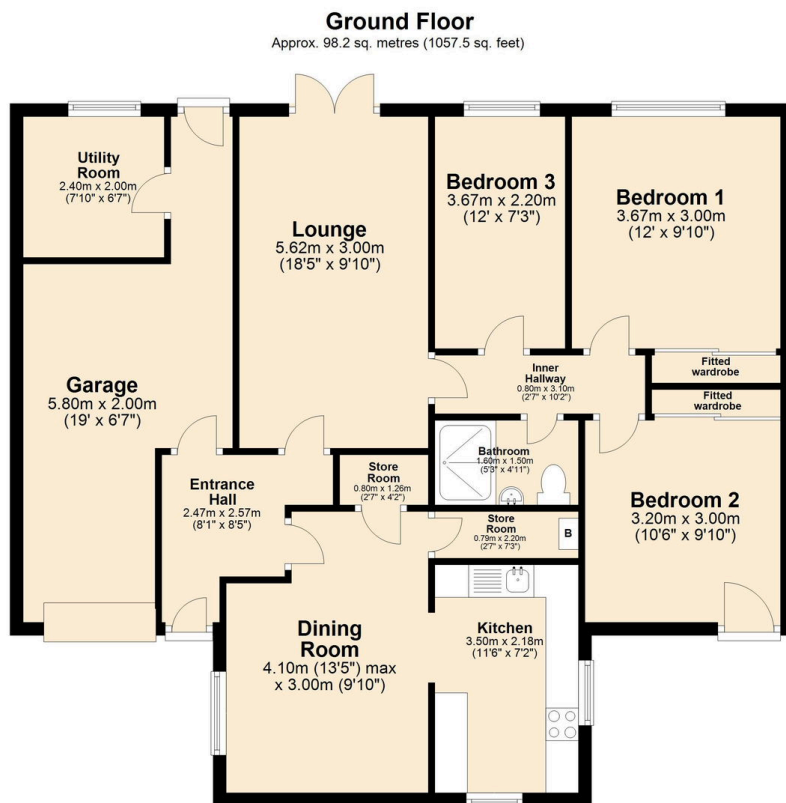
[www.neilrobinson.co.uk](http://www.neilrobinson.co.uk)



NEIL ROBINSON

Estate Agents

- Private Driveway and Garage
- Modern Wren Kitchen
- Adaptable Accessibility Features
- Well-Maintained Rear Garden
- Versatile Dining Area
- Spacious, Welcoming Hallway
- Large Rear Lounge
- Generously Sized Bedrooms
- Ample Storage Throughout
- Chain-Free and Move-In Ready



Total area: approx. 98.2 sq. metres (1057.5 sq. feet)

Nestled in the sought-after area of Darfield in Upholland, this beautifully maintained three-bedroom semi-detached bungalow presents a welcoming, accessible home with versatile features to meet various lifestyle needs. Approaching the property, you'll be greeted by a private driveway providing convenient off-road parking, alongside an integral garage complete with an electric roller shutter for effortless access.

Skelmersdale Office  
01695 355110

108 The Concourse  
Skelmersdale  
WN8 6LJ

Ashton-in-Makerfield Office  
01942 466221

405 Wigan Road  
Ashton-in-Makerfield  
WN4 0AR



[www.neilrobinson.co.uk](http://www.neilrobinson.co.uk)