



Corner Farm Close, Tadworth

The **PERSONAL** Agent

£579,995

Freehold

- Three bedrooms
- Semi detached house
- Entrance hall and WC
- Modern fitted kitchen
- Conservatory
- Bedroom one with en-suite shower
- Two further bedrooms
- Modern fitted bathroom
- Front and rear gardens
- Driveway with garage

An attractive and very well presented three bedroom semi-detached property situated within a sought after cul-de-sac close to local shops, restaurants, cafe's and BR train station.

Offered in good condition with a conservatory and garage, internal viewing is highly recommended.

You are greeted by an entrance hall with downstairs cloakroom, modern fitted kitchen with integrated appliances, and a



living room with an adjoining conservatory opening to the rear garden.

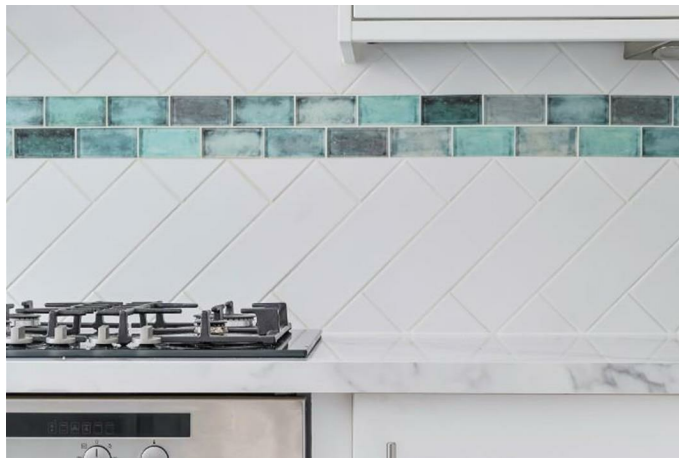
On the first floor bedroom one has an en-suite shower room, and there are two further bedrooms and a modern fitted bathroom.

To the front of the property there is a driveway with garage, with gardens to the front and rear with side access.

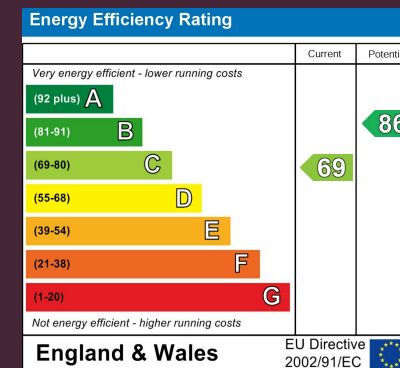
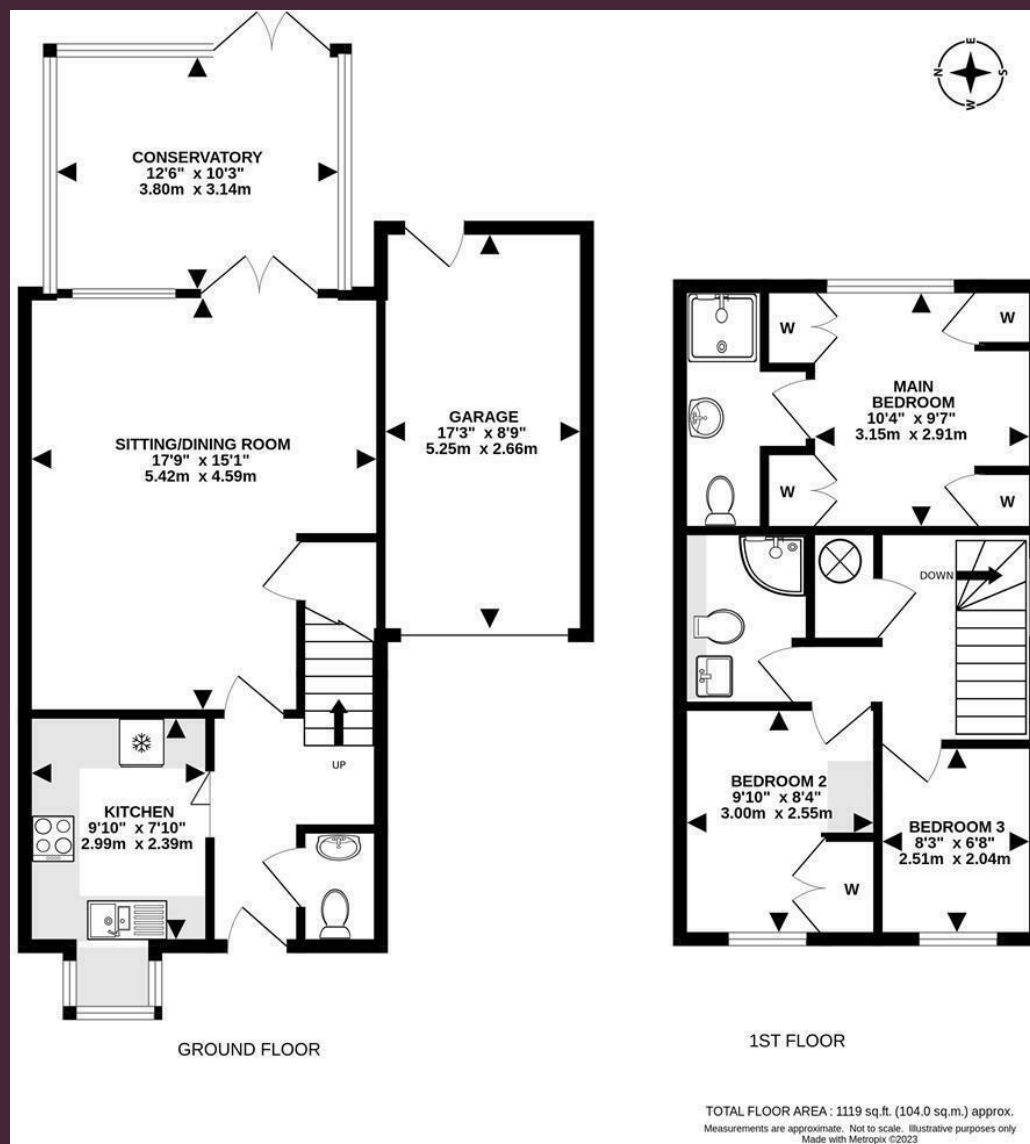
Corner Farm Close is a small modern development situated in the heart of

Tadworth village. The village is within a few moments walk with local shops, supermarket, cafe's and restaurants. Tadworth train station has a direct link with London Waterloo, there are various bus routes close by and acres of open countryside on Epsom Downs and Walton Heath.

Tadworth and the nearby villages have a selection of well regarded schools both primary and secondary.







EPSOM OFFICE
2 West Street
Epsom, Surrey, KT18 7RG
01372 745 850

STONELEIGH/EWELL OFFICE
62 Stoneleigh Broadway
Stoneleigh, Surrey, KT17 2HS
020 8393 9411

BANSTEAD OFFICE
141 High Street
Banstead, Surrey, SM7 2NS
01737 333 699

TADWORTH OFFICE
Station Approach Road
Tadworth, Surrey, KT20 5AG
01737 814 900

LETTINGS & MANAGEMENT
157 High Street
Epsom, Surrey KT19 8EW
01372 726 666

The Personal Agent Ltd. Registered office: 2A Boston Rd, Henley-on-Thames RG9 1DY.
Registered in England No. 4398817.



The
PERSONAL
Agent

Please Note: Whilst every attempt has been made to ensure the accuracy of the floorplans contained here, measurements of doors, windows and room areas are approximate and no responsibility is taken for any error, omission or mis-statement. These plans are for representation purposes only and should be used as such by and prospective purchaser. The services, systems and appliances listed in the specification have not been tested by The Personal Agent and no guarantee as to their operating ability or their efficiency can be given. All images and text used to advertise our properties are for the sole use of The Personal Agent Ltd.

