



61B MOOR END

HOLME UPON SPALDING MOOR, YO43 4DR

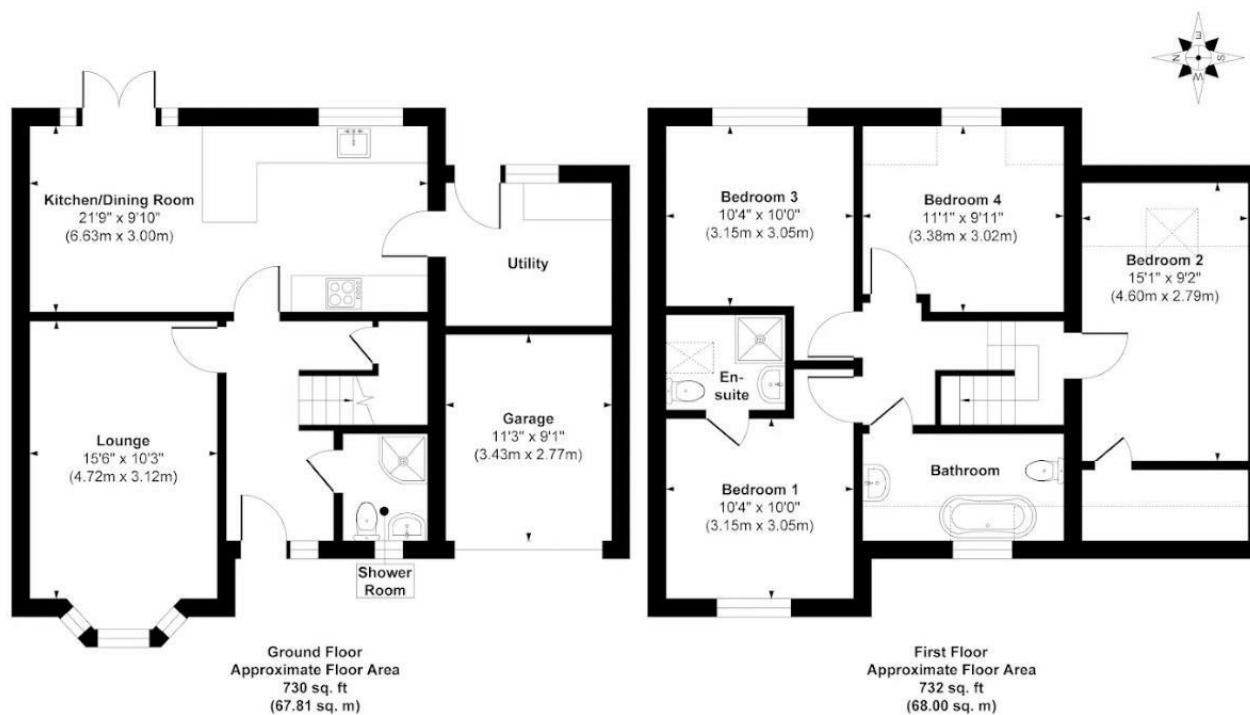
£350,000
FREEHOLD

Significant Price Reduction – Don't Miss Out!

Dove House is a stunning, individually designed four-bedroom new-build in Holme on Spalding Moor, offering over 1,400 sq. ft of high-spec accommodation, a garage, and generous gardens with uninterrupted views of the Yorkshire Wolds. Perfectly blending modern family living with luxury finishes, this unique home is one of only two on a private development.

MONROE

SELLERS OF THE FINEST HOMES



Approx. Gross Internal Floor Area 1462 sq. ft / 135.81 sq. m (Including Garage)

Illustration for identification purposes only. Measurements are approximate, not to scale.

Copyright © Show Home.



Energy Efficiency Rating		
	Current	Potential
Very energy efficient - lower running costs		
(92 plus) A		94
(81-91) B	84	
(69-80) C		
(55-68) D		
(39-54) E		
(21-38) F		
(1-20) G		
Not energy efficient - higher running costs		
England & Wales	EU Directive 2002/91/EC	

Agents Note: Whilst every care has been taken to prepare these particulars, they are for guidance purposes only. All measurements are approximate and are for general guidance purposes only and whilst every care has been taken to ensure their accuracy, they should not be relied upon and potential buyers/tenants are advised to recheck the measurements

Land & New Homes
1-3 The Avenue
Alwoodley
Leeds
West Yorkshire
LS17 7BD

0113 350 1444
landandnewhomes@monroestateagents.com
www.monroestateagents.com

MONROE

SELLERS OF THE FINEST HOMES