



PLOT 2, RIDGE COURT PUDSEY ROAD
LEEDS, LS13 4HX

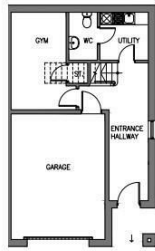
£575,000
FREEHOLD

BRAND NEW HOMES AVAILABLE NOW

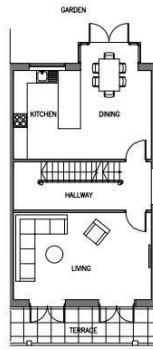
Welcome to Ridge Court... This executive development of show-stopper homes boasts beautiful valley views, high specification throughout and versatile, spacious living.

M O N R O E

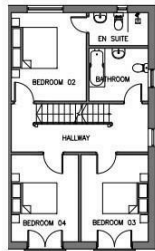
SELLERS OF THE FINEST HOMES



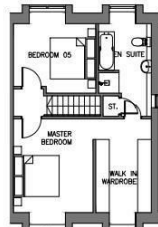
BASEMENT FLOOR
 Garage 5.50 x 4.50m
 Utility 2.50 x 2.50m
 WC 2.50 x 1.50m
 Gym 4.50 x 2.50m max.



GROUND FLOOR
 Living Room 4.50 x 3.50m
 Kitchen 2.50 x 2.50m
 Dining 2.50 x 2.50m max.
 Terrace 4.50 x 1.50m



FIRST FLOOR
 Bedroom 02 3.50 x 3.50m
 Bedroom 03 3.50 x 2.50m
 Bedroom 04 3.50 x 2.50m
 Bedroom 2.50 x 2.50m
 En Suite 2.50 x 1.45m



SECOND FLOOR
 Master Bedroom 4.50 x 3.45m max.
 Bed in Bedroom 4.50 x 2.45m
 En Suite 4.50 x 2.25m max.
 Bedroom 3.50 x 3.50m max.

Unit 2
 Marketing Plans
 18.05.2023



Agents Note: Whilst every care has been taken to prepare these particulars, they are for guidance purposes only. All measurements are approximate and are for general guidance purposes only and whilst every care has been taken to ensure their accuracy, they should not be relied upon and potential buyers/tenants are advised to recheck the measurements

Land & New Homes
 1-3 The Avenue
 Alwoodley
 Leeds
 West Yorkshire
 LS17 7BD

0113 870 4443
 hello@monroestateagents.com
 www.monroestateagents.com

MONROE

SELLERS OF THE FINEST HOMES