



## 24 WOOD LANE

LEEDS, LS6 2BA

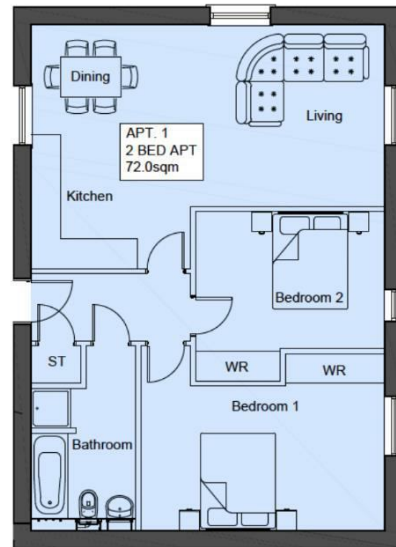
£299,950  
LEASEHOLD

Welcome to The Belmont, a stunning collection of contemporary and elegant 1, 2 and 3 bed homes. A community with private off-street parking set amongst mature, landscaped grounds on Wood Lane, just a few minutes' walk from Headingley town centre - one of Leeds' most vibrant and exciting suburbs. This is a ground floor, two bedroom apartment. COMPLETION SEPTEMBER 2024- ENQUIRE NOW TO RESERVE YOUR APARTMENT!

MONROE

SELLERS OF THE FINEST HOMES

## The Coach House, Apartment 1, Ground Floor



Energy Efficiency Rating		
	Current	Potential
Very energy efficient - lower running costs		
(92 plus) <b>A</b>		
(81-91) <b>B</b>		
(69-80) <b>C</b>	77	77
(55-68) <b>D</b>		
(39-54) <b>E</b>		
(21-38) <b>F</b>		
(1-20) <b>G</b>		
Not energy efficient - higher running costs		
<b>England &amp; Wales</b>	EU Directive 2002/91/EC	

Agents Note: Whilst every care has been taken to prepare these particulars, they are for guidance purposes only. All measurements are approximate and are for general guidance purposes only and whilst every care has been taken to ensure their accuracy, they should not be relied upon and potential buyers/tenants are advised to recheck the measurements

Land & New Homes  
1-3 The Avenue  
Alwoodley  
Leeds  
West Yorkshire  
LS17 7BD

0113 350 1444  
landandnewhomes@monroestateagents.com  
www.monroestateagents.com

MONROE

SELLERS OF THE FINEST HOMES